

# 63 The Drive

Uxbridge • • UB10 8GD

PCM: £4,100 PCM



coopers  
est 1986

Extremely spacious two bedroom apartment with private terrace located in the new contemporary building at Harefield Place, Ickenham.

Harefield Place, located on The Drive in Ickenham which is one of the most sought after locations in Middlesex, is an exclusive development of just 25 extraordinary apartments (nine of which are located in the Georgian Mansion & 16 in the new contemporary building) which are positioned on an amazing plot of 8.5 acres of landscaped gardens.

Features include a leisure complex for residents including swimming pool, sauna, jacuzzi & gym. Secure undercroft parking for two cars and an additional storage unit. Tennis court and a private lake.

High End Gated Development

Two Bedroom Luxurious Apartment

Set Within a Contemporary New Building

Leisure Facilities (Gym, Swimming Pool, Sauna, Jacuzzi)

Secure Undercroft Parking For Two Cars

Seperate Storage Unit

All Weather Tennis Court

Private Lake

Underfloor Heating

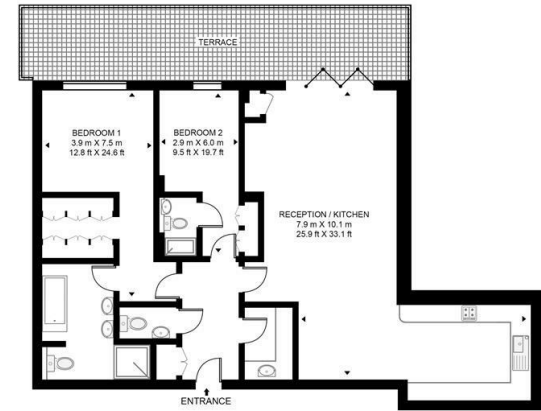
8.5 Acres Of Land

Available Date

19th August 2023



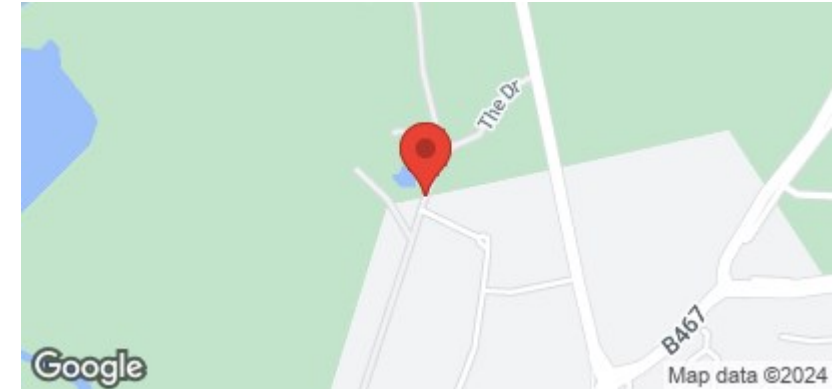
BROMPTON HOUSE  
APPROXIMATE GROSS INTERNAL FLOOR AREA 1514 SQ.FT (140.7 SQ.M)



LOWER GROUND FLOOR



This floor plan has been defined by the RICS Code of Measurement. This floor plan and all others are for approximate representative purposes only and upon usage is agreed to as such by the client.  
WWW: hdivirtualart.com | TEL: 0203 974 1567 | EMAIL: info@hdivirtualart.com

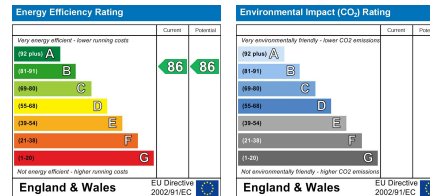


coopers  
est 1986

01895 625 625

126-128 High Street, Ruislip,  
Middlesex, HA4 8LL  
rl@coopersresidential.co.uk

CoopersResidential.co.uk



Important Notice: These particulars, whilst believed to be accurate are set out as a general outline only for guidance and do not constitute any part of an offer or contract. Intending purchasers should not rely on them as statements or representation of fact, but must satisfy themselves by inspection or otherwise has the authority to make or give any representation or warranty in respect of the property.