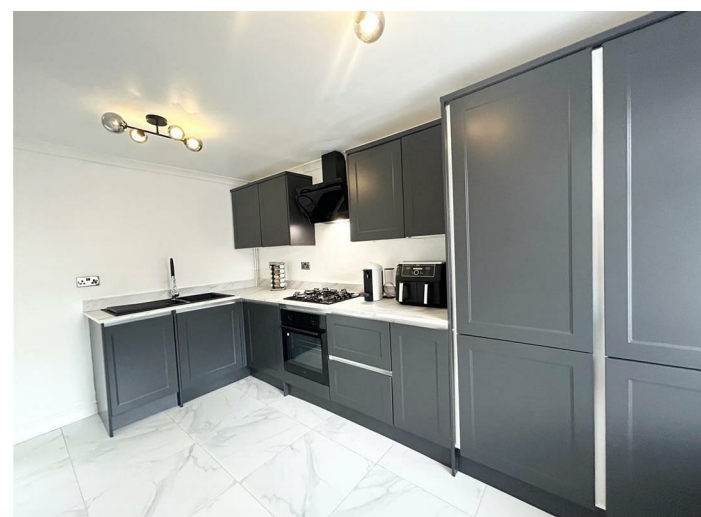




7, Court Colman Street  
Bridgend, CF32 7RL



Watts  
& Morgan

# 7 Court Colman Street

Nantymoel, Bridgend CF32 7RL

## £795 PCM

2 Bedrooms | 1 Bathrooms | 1 Reception Rooms

This two-bedroom mid terrace property boasts from being refurbished throughout to a high standard, located within close proximity to local shops and schools and benefits from being close by to scenic trail routes for walking and cycling enthusiast. The property comprises an entrance hallway, modern fitted kitchen with integrated appliances and a good size living room. To the first floor two double bedrooms and a contemporary family shower room. Externally the garden is tiered over three levels with the top tier being laid to lawn. On street parking available only. Available upon completion of references. EPC -D. Council Tax- A.

