



KENSINGTON GARDENS SQUARE LONDON
£790 PER WEEK AVAILABLE 26/10/2024

Hamptons

THE HOME EXPERTS

{ THE PARTICULARS

**Kensington Gardens Square
London W2**

**£790 Per Week
Furnished**

 **1 Bedroom**
 **1 Bathroom**
 **1 Reception**

Features

Spacious Reception, Double Bedroom,
Modern Bathroom, Porter, Communal
Garden

Council Tax

Council Tax Band D

Hamptons

301 Westbourne Grove
Notting Hill, London, W11 2QA
020 7034 0405
nottinghilllettings@hamptons.co.uk
www.hamptons.co.uk

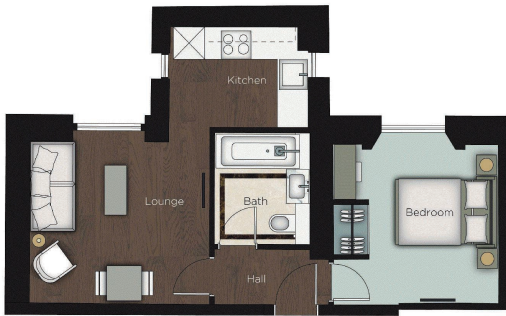
The Property

This newly refurbished, contemporary one bedroom apartment sits on the ground floor of a popular period building on Kensington Garden Square, off Westbourne Grove. The apartment comprises a spacious reception room with elevated ceiling and large sash window overlooking Kensington Garden Square, one double bedroom and modern en-suite bathroom. The building has its own concierge and all residents have access to beautiful communal gardens.

Location

Kensington Gardens Square is well located for the calm, green open space of Hyde Park and the vibrant boutiques, cafes and restaurants dotted along Westbourne Grove and Queensway. Excellent transport links directly to the City are on the doorstep, with both Bayswater (District & Circle line) and Queensway (Central line) underground stations a short walk away.





For Clarification

We wish to inform prospective tenants that we have prepared these particulars as a general guide and they have been confirmed as accurate by the landlord. We have not verified permissions, nor carried out a survey, tested the services, appliances and specific fittings. Room sizes are approximate and measurement figures rounded: they are taken between internal wall surfaces and therefore include cupboards/shelves, etc. Accordingly, they should not be relied upon for

carpets and furnishings. It should also be noted that all fixtures and fittings, carpeted, curtains/blinds, kitchen equipment and garden statuary, whether fitted or not, are deemed removable by the landlord unless specifically itemised with these particulars. Please enquire in office or on our website for details on holding deposit and tenancy deposit figures.



ESTABLISHED 1969
THE HOME EXPERTS