



7 Thornfield Park Barrow-In-Furness LA14 5QD

Offers In The Region Of £475,000

This beautifully presented detached 4-bedroom home offers spacious and versatile living accommodation, ideal for modern family life. Situated in a sought-after family location, the property boasts a generous lounge, separate dining area, and a stylish, contemporary kitchen. With lovely décor throughout, it is ready to move into and enjoy. Externally, the home features well-maintained gardens to the front and rear, perfect for outdoor entertaining or relaxing with the family. A private garage provides secure parking and additional storage. This attractive property combines comfort, space, and style, making it a perfect choice for families seeking a home in a desirable setting.



Porch
6'6" x 10'9"

Ground Floor WC
6'4" x 3'4"

Study
8'10" x 9'7"

Dining Area
13'9" x 7'5"

Lounge
11'3" x 21'2"

Kitchen
14'4" x 9'3"

Orangery
13'5" x 10'8"

Utility
7'9" x 7'5"

Bedroom One
10'1" x 15'4"

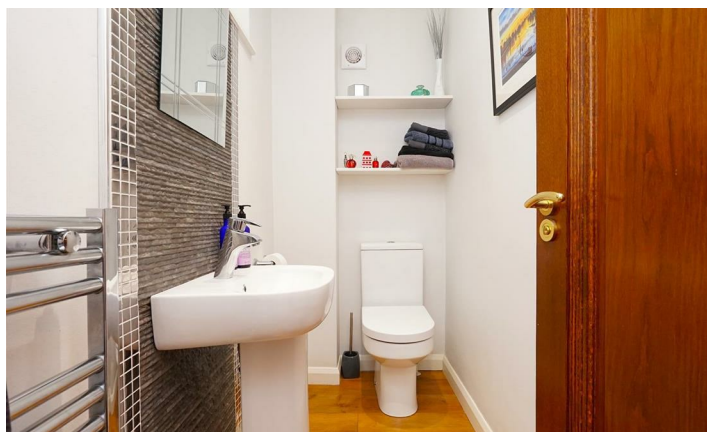
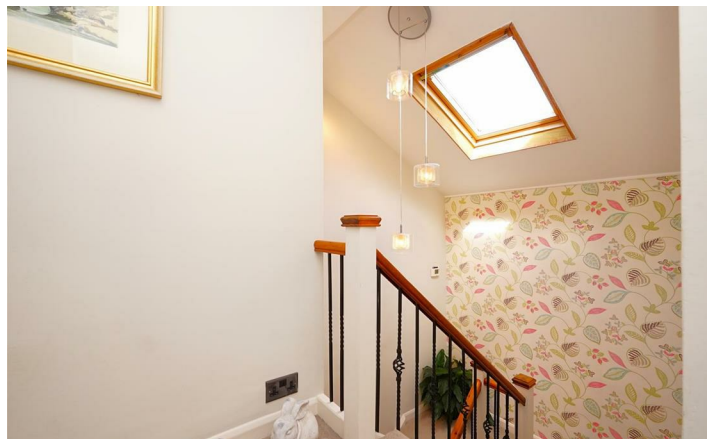
Bedroom Two
10'0" x 11'6"

Bedroom Three
11'1" x 10'3"

Bedroom Four
9'2" x 9'4"

Bathroom
6'3" x 14'2"

Garage
16'1" x 10'1"



As you approach this beautifully presented detached four-bedroom home, you're welcomed by a well-maintained front garden and an attached garage, offering both curb appeal and practical storage. A pathway leads to a generously sized porch, creating a warm and inviting entrance.

Stepping inside, you're greeted by laminate flooring that flows seamlessly throughout the ground floor, setting a modern and cohesive tone. Upon entering through the front door, you arrive in the central hallway, which offers access to a ground floor WC, a study, the kitchen, the dining area, and the staircase leading to the first floor. At the front of the property, the study provides a peaceful space for working from home, featuring plush carpeting and blush pink walls, creating a soft and calming atmosphere.

Moving into the dining area, you'll find a bright and sociable space that enjoys open access into the lounge. The lounge itself is of generous proportions, with light stone coloured carpeting, spotlights, and a teal blue feature wall adding a stylish touch. French doors open out onto the rear garden, allowing for plenty of natural light and seamless indoor-outdoor living.

The heart of the home is the modern kitchen, which showcases sleek cashmere flat-fronted wall and base units complemented by white Silestone work surfaces. A breakfast bar wraps around one end, complete with pendant lighting above and spotlights on the ceiling, offering a perfect space for casual dining or morning coffee. Integrated appliances include two single ovens, a steam combination oven, a microwave, induction hob, dishwasher, and fridge/freezer, while under-cabinet spotlights provide additional task lighting and ambiance. From the kitchen, French doors lead into the stylish orangery, where the laminate flooring continues, creating a unified flow. This light-filled space is ideal for relaxing or entertaining, while enjoying lovely views over the rear garden.

Just off the kitchen, a separate utility room is fitted with light grey shaker-style units, wood-effect laminate work surfaces, and provides practical storage and workspace. From here, you can access the garage or a side door leading out to the side of the property.

Heading up the stairs you arrive onto the first-floor landing, where you will find light stone coloured carpeting running throughout, adding warmth and comfort to the upper level.

Bedroom one is positioned at the rear of the property and easily accommodates a double bed, with ample space for wardrobes or additional furniture. The décor is light grey, offering a calm and contemporary feel.

Bedroom two sits at the front of the home, also generously sized to fit a double bed. It benefits from built-in storage and shares the same stylish light grey walls, providing a cohesive aesthetic across the home.

At the rear, bedroom three is another spacious double, continuing the light grey theme and offering peaceful views over the back garden.

Bedroom four, located at the side of the property, is a small double and would serve well as a nursery, hobby room, or second study if required.

The bedrooms are served by a well-appointed four-piece family bathroom, featuring dark wood-effect lvt flooring, white tiled walls, and a full suite comprising a bath, pedestal sink, WC, and a separate shower cubicle with blue and white tiles.

Additionally, you will find the loft, which is fully boarded with lined walls, spot lighting and electric power points.

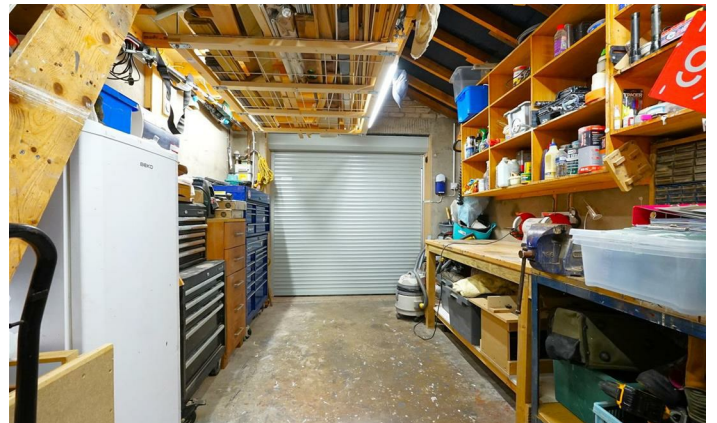
Stepping out through the French doors in the lounge or orangery, you're welcomed into the private rear garden. The garden is thoughtfully landscaped with a well-maintained lawn at its centre, bordered by pebble stones that add texture and definition. Mature bushes, trees, and a variety of shrubs provide colour, privacy, and a natural backdrop throughout the seasons. A paved patio area offers the ideal spot for outdoor dining.



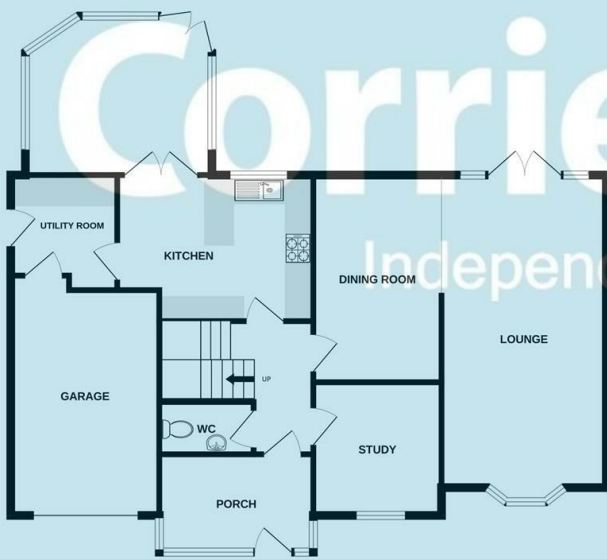








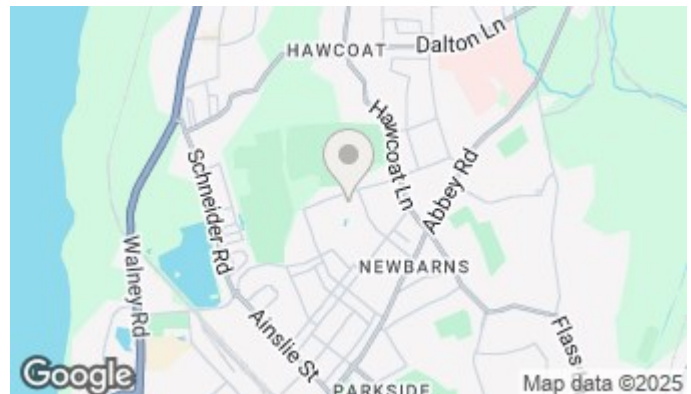
GROUND FLOOR



1ST FLOOR



Whilst every attempt has been made to ensure the accuracy of the floorplan contained here, measurements of doors, windows, rooms and any other items are approximate and no responsibility is taken for any error, omission or mis-statement. This plan is for illustrative purposes only and should be used as such by any prospective purchaser. The services, systems and appliances shown have not been tested and no guarantee as to their operability or efficiency can be given.
Made with Metropix ©2025



Corrie and Co aim to sell your property at the best possible price in the shortest possible time. We have developed a clear marketing strategy to ensure that your property is fully exposed to the local, regional and national market place and we are confident that we can provide a marketing service second to none. Our Sales Team offer:

- Full colour contemporary sales literature with floorplans
- A full programme of local / regional advertising and promotion on the Corrie and Co and Rightmove websites
- 24/7 promotion in our Barrow, Ulverston and Millom offices
- Professional viewing service and prompt feedback
- Experienced, friendly staff
- Eye catching 'For Sale' board

To ensure your move is looked after, we can help you with an Energy Performance Certificate and arrange a free mortgage and finance review. We also provide a competitive No Sale – No Fee conveyancing service with well known and trusted local solicitors. Our valuation and sales advice is impartial, completely free with no obligation.

Unlike many High Street Estate Agency chains, Corrie and Co are wholly independent and can therefore recommend the mortgage and lender that is most suitable for your needs. Our aim is to provide quality advice and expertise at all times so that you can make an informed decision every step of the way.

