



7 Earle Street

Barrow-In-Furness, LA14 2PZ

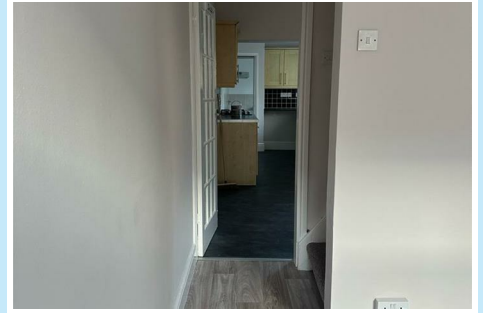
£675 Per Month



7 Earle Street

Barrow-In-Furness, LA14 2PZ

£675 Per Month

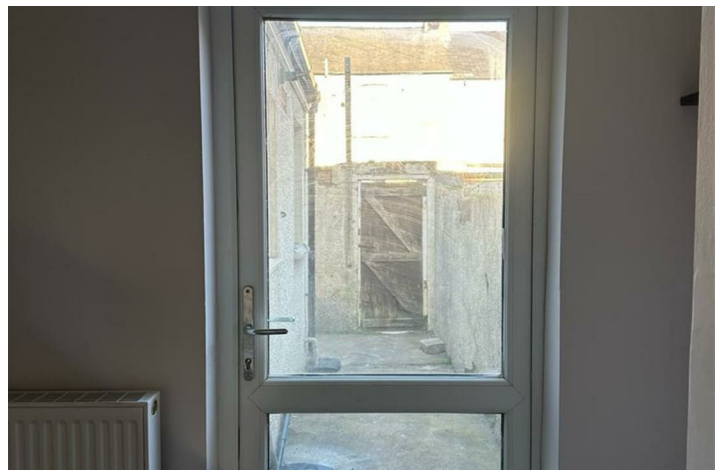
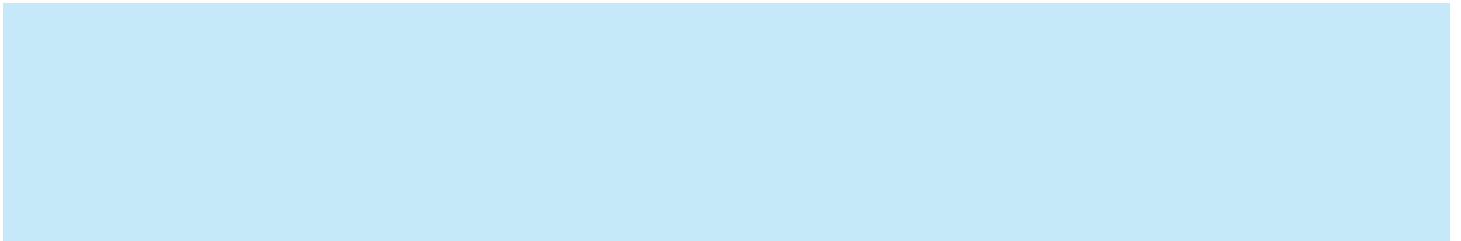


This delightful mid-terrace house offers a perfect blend of modern living and comfort. Spanning an impressive 990 square feet, the property features two spacious double bedrooms, ideal for those seeking a comfortable home office space.

Upon entering, you are welcomed by two inviting reception rooms, downstairs bathroom, spacious kitchen, modern decor throughout, the home creates a warm and stylish atmosphere, Outside, the rear yard offers a private outdoor space.

Situated close to BAE and local amenities, schools, and transport links, making it an excellent choice for those looking to settle in Barrow-In-Furness.

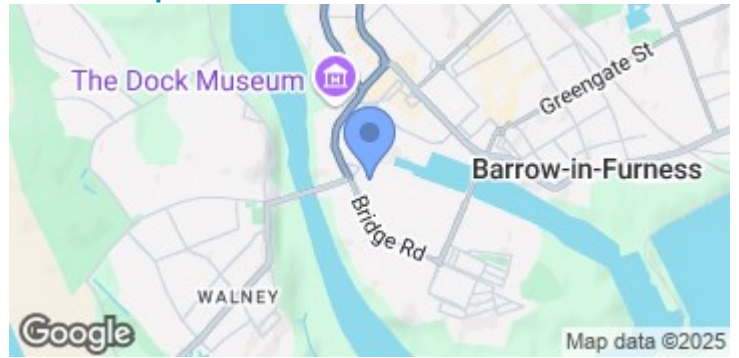
Contact today to book a viewing!!



Road Map



Terrain Map



Floor Plan

Corrie and Co aim to sell your property, at the best possible price, in the shortest possible time. We have developed a clear marketing strategy, over many years, to ensure your property is exposed to all social media platforms, Rightmove, Zoopla and our own Corrie and Co website.

We also offer:

- Professional Photography
- Full promotion, throughout all our branches
- Experienced, qualified, friendly staff
- Full viewing service with feedback

To ensure your move is stress free, we can help with Mortgage advice. We work alongside local Solicitors, offering competitive conveyancing services.

We are local, family run business who are wholly independent which means we can recommend services to most suit your needs. Our aim is to provide quality advice and expertise at all times, so you can make an informed decision.

