



154 Chatsworth Street

Barrow-In-Furness, LA14 5RX

Offers In The Region Of £159,950



3



2



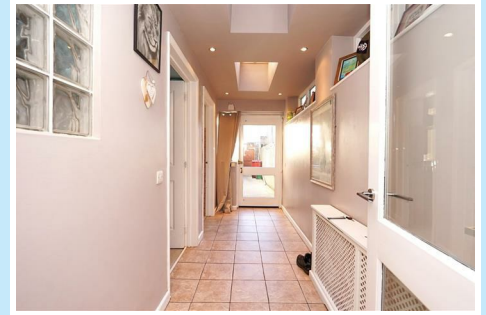
2



154 Chatsworth Street

Barrow-In-Furness, LA14 5RX

Offers In The Region Of £159,950



A delightful three-bedroom terrace located in a convenient area, close to local amenities and transport links. This property offers spacious living accommodation, ideal for a range of buyers, including first-time buyers, families, or investors. Boasting neutral décor throughout, it provides a blank canvas ready for personalisation. The home features a low-maintenance rear yard, perfect for outdoor enjoyment. Don't miss the opportunity to view this versatile and well-presented property!

This traditional, red brick terrace is extended and well maintained throughout. The forecourt offers a nice sized front, away from the pavement. Entering the house, the traditional features and light, modern feel to the hallway offers access to the stairs and into the reception rooms. The front reception, has high ceilings, feature wallpaper and double window outlook, it leads into the second reception with feature wall and cast iron fireplace. Dividing the two rooms are double doors, offering the option of room division or open plan, offering versatility for families or home working. Leading to the rear of the house is the extended kitchen, accessed via the rear hallway, which afford access to the rear yard and the ground floor wet room.

The extended kitchen has a range of base and wall units, in an oak finish with complimentary floor and wall tiles plus integral appliances. Opening up to the dining area, the neutral décor and sky lights with recessed ceiling lighting, creates an open dining area. Leading from here you access the utility room and second rear access to the yard.

To the first floor, there is three well sized bedrooms. The master bedroom has cream décor making it a perfect space to put your personal touch on. There is plenty of space for a double bed and wardrobes, finished off with a brown carpet. The second and third bedroom have laminate flooring in each room, both rooms are of great size with the third bedroom currently being used as a wardrobe area. The family bathroom has a three piece white suite and comprises of a bath with over head shower attachment, Free standing sink and WC.

Reception One

11'4" x 11'5" (3.47 x 3.50)

Reception Two

11'3" x 13'1" (3.43 x 3.99)

Wet Room

8'1" x 8'9" (2.48 x 2.69)

Kitchen Diner

8'1" x 33'6" (2.47 x 10.23)

Utility

4'9" x 8'3" (1.47 x 2.54)

Bedroom One

11'4" x 14'7" (3.47 x 4.45)

Bedroom Two

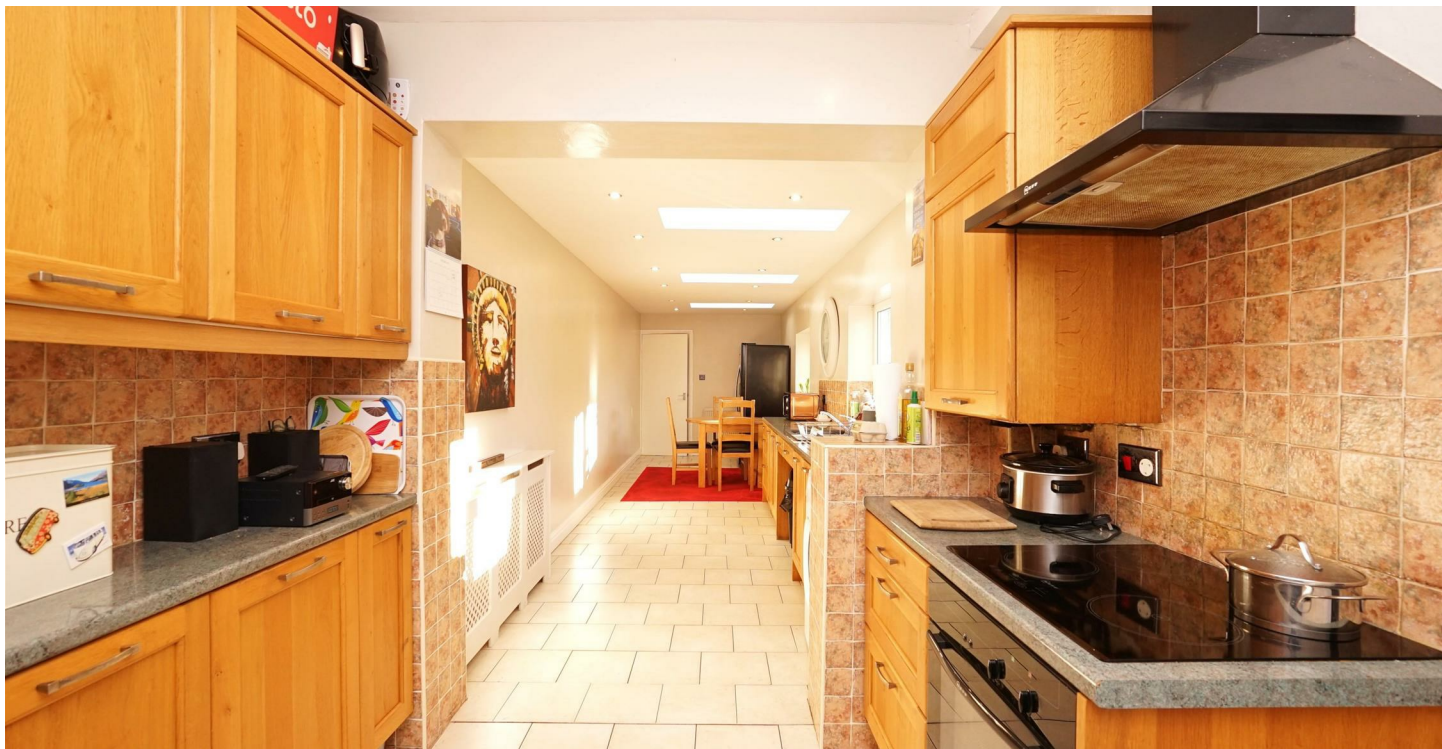
13'2" x 8'10" (4.03 x 2.70)

Bedroom Three

8'2" x 9'5" (2.49 x 2.88)

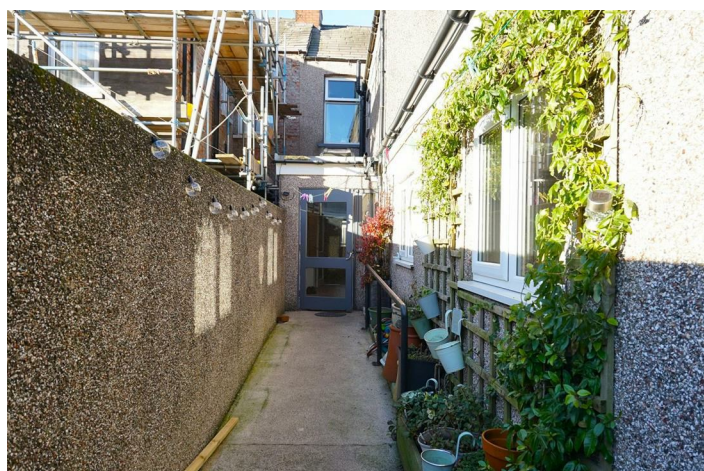
Bathroom

9'0" x 5'4" (2.76 x 1.64)

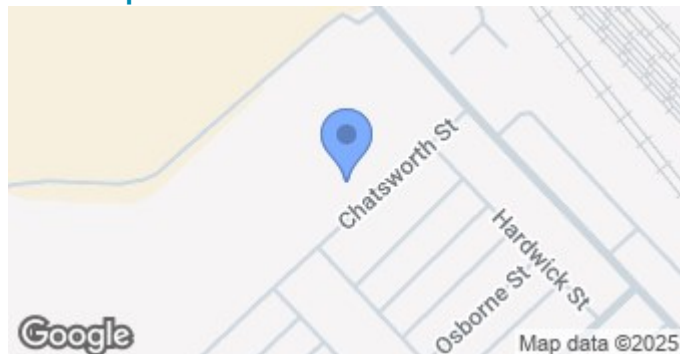


- Three Bedrooms
- Private Yard To Rear
- Ground Floor Wet Room
- Close To Local Amenities
- Council Tax Band - A

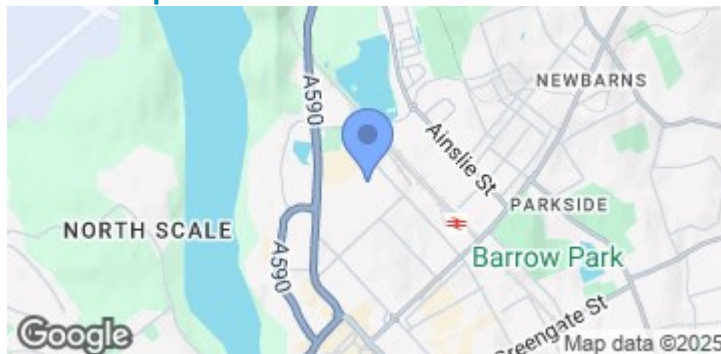
- Spacious Living
- Forecourt To Front
- Close To Transport Links
- Gas Central Heating
- Double Glazing



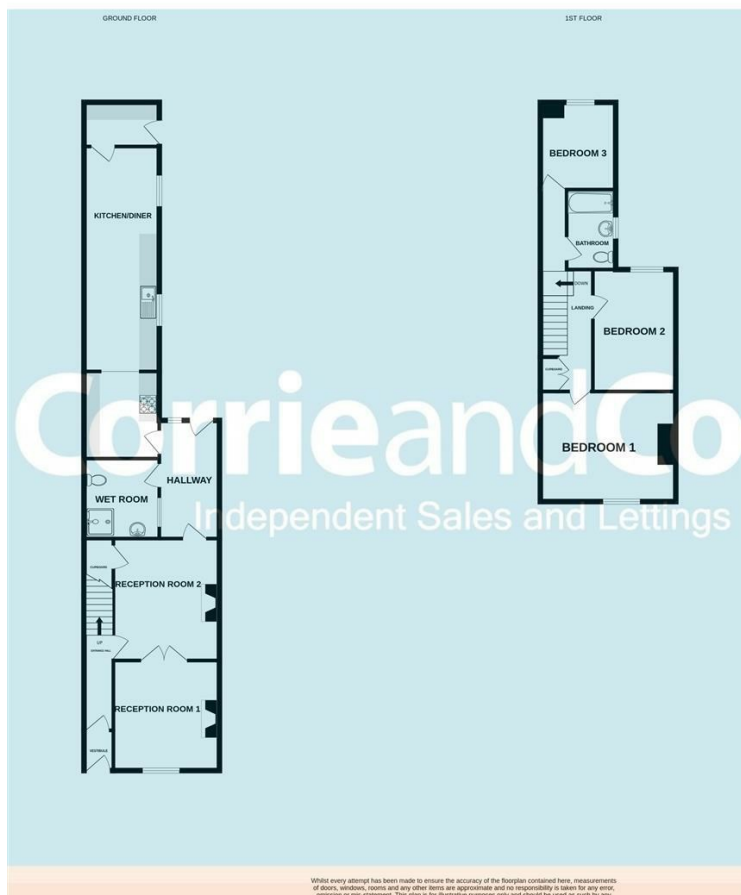
Road Map



Terrain Map



Floor Plan



Corrie and Co aim to sell your property, at the best possible price, in the shortest possible time. We have developed a clear marketing strategy, over many years, to ensure your property is exposed to all social media platforms, Rightmove, Zoopla and our own Corrie and Co website.

We also offer:

- Professional Photography
- Full promotion, throughout all our branches
- Experienced, qualified, friendly staff
- Full viewing service with feedback

To ensure your move is stress free, we can help with Mortgage advice. We work alongside local Solicitors, offering competitive conveyancing services.

We are local, family run business who are wholly independent which means we can recommend services to most suit your needs. Our aim is to provide quality advice and expertise at all times, so you can make an informed decision.

