

# CorrieandCo

INDEPENDENT SALES & LETTING AGENTS



## 18 Shakespeare Street

Barrow-In-Furness, LA14 5RE

Offers In The Region Of £120,000



2



1



2



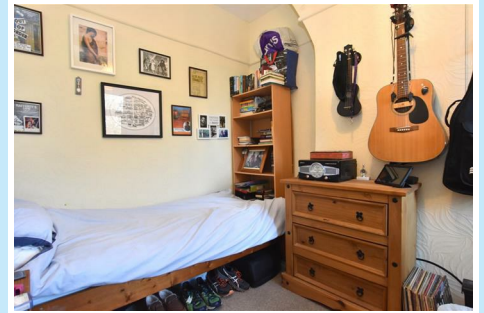
D



# 18 Shakespeare Street

Barrow-In-Furness, LA14 5RE

## Offers In The Region Of £120,000



***This mid-terrace house is perfect for first-time buyers looking to settle in a popular location with walking distances to the town centre, bus stops and train station. The property boasts two well-appointed bedrooms, providing ample space for a small family or guests. The drive at the front of the property makes it ideal for off road parking. The yard at the back of the property is a good size for seating and storage.***

As you enter the property you arrive into the vestibule which provides access to the living room. The living room is open plan with easy access into the dining room. Both rooms have been decorated neutrally with carpet ready for moving in. The dining room boasts French doors that lead into the yard allowing plenty of natural light to brighten up the room. The kitchen has been fitted with a good range of wood effect wall and base units on either side of the room which provides ample space for storage, and grey granite effect laminate work surfaces. The integrated appliances included are a single oven and four ring gas hob with space for a stand alone dishwasher, gas hob, washing machine and fridge/freezer. To the end of the kitchen is a single door where you can access the rear yard.

Heading upstairs you will find two good sized bedrooms which have been decorated neutrally with cream coloured walls and grey carpeting. There is a family sized three piece suite bathroom to the rear which comprises of a bath with an over head shower attachment, a vanity sink and WC.

To the rear you will find a private yard ideal for outdoor seating.

### Entrance Hall

13'11" x 2'8" (4.25 x 0.82)

### Living Room

10'5" x 10'4" (3.19 x 3.15)

### Dining Room

12'1" x 10'7" (3.70 x 3.23)

### Kitchen

12'4" x 7'0" (3.78 x 2.15)

### Bedroom One

10'6" x 13'10" (3.22 x 4.23)

### Bedroom Two

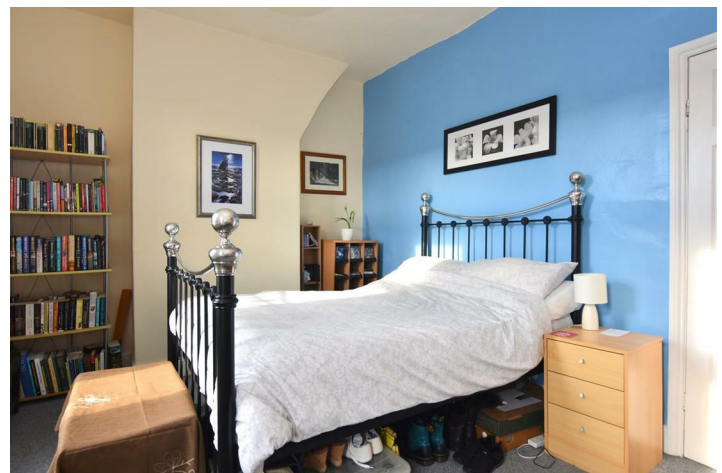
12'3" x 8'1" (3.75 x 2.47)

### Bathroom

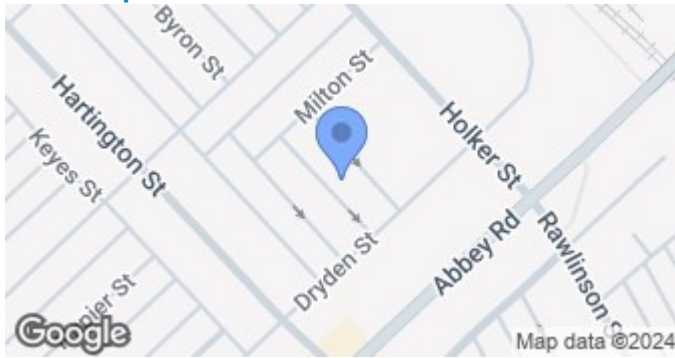
12'7" x 7'4" (3.84 x 2.24)



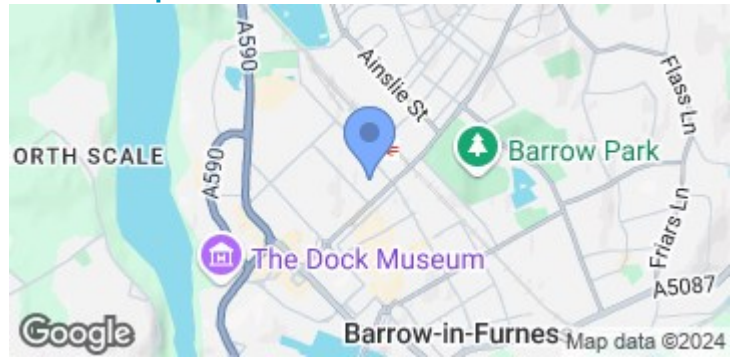
- Ideal for a Range of Buyers
- Open Plan Living Room
  - Close To Amenities
  - Gas Central Heating
  - Council Tax Band - A
- Off Road Parking
- Private Rear Yard
- Close To Local Transport Links
- Double Glazing



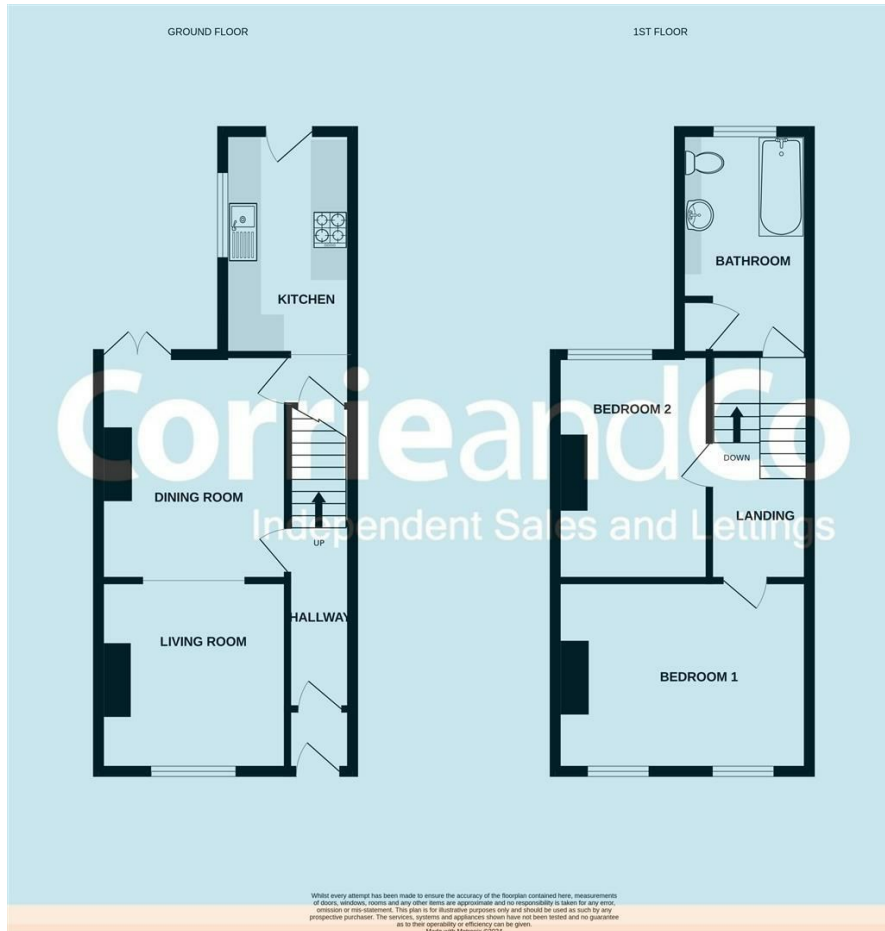
## Road Map



## Terrain Map



## Floor Plan



Corrie and Co aim to sell your property, at the best possible price, in the shortest possible time. We have developed a clear marketing strategy, over many years, to ensure your property is exposed to all social media platforms, Rightmove, Zoopla and our own Corrie and Co website.

We also offer:

- Professional Photography
- Full promotion, throughout all our branches
- Experienced, qualified, friendly staff
- Full viewing service with feedback

To ensure your move is stress free, we can help with Mortgage advice. We work alongside local Solicitors, offering competitive conveyancing services.

We are local, family run business who are wholly independent which means we can recommend services to most suit your needs. Our aim is to provide quality advice and expertise at all times, so you can make an informed decision.

