



1 Malton Crescent

Barrow-In-Furness, LA14 5LJ

Offers In The Region Of £245,000



3



1



2



E



1 Malton Crescent

Barrow-In-Furness, LA14 5LJ

Offers In The Region Of £245,000



A charming semi-detached house located in a popular residential location offering plenty of space for the whole family to enjoy. The lovely décor throughout the house adds a touch of elegance and warmth to the space, creating a welcoming atmosphere for you to unwind in. Additionally, the garage and off-road parking provide ample space for your vehicles, making coming home a breeze.

On approach, you find this property tucked away in a cul-de-sac location, set back from the street with a gated entrance onto the driveway leading up to the garage and to the porch.

As you enter through the porch, you will have access into the hallway, decorated with oak flooring and neutral walls giving access to the living room, the lounge and the kitchen diner. The oak flooring and neutral décor flows through to the living room, which is to the front aspect of the property, boasting a bay window allowing plenty of light. The lounge to the rear, over looks the garden through the bay windows, and has been decorated neutrally with a navy feature wall and brick fireplace with solid wood flooring. The modern navy colour scheme continues into the kitchen which has been fitted with a good range of shaker style wall and base units with complimentary work surfaces, a tiled flooring and white subway splashback, featuring a breakfast bar and ample space for free standing appliances such as a fridge/freezer and a range cooker.

To the first floor you will find three bedrooms and a bathroom. The first double bedroom to the rear aspect of the property boasts bay windows over looking the garden and has been decorated with beige carpets and cream walls. Similar décor flows through to the second double bedroom situated to the front of the property and offers ample space. The third bedroom, also to the rear, boasts a feature wallpaper and neutral décor. The three piece bathroom suite comprises of a bath with an over head shower attachment, a WC and a pedestal sink and has been decorated with a decorative tiled flooring and white subway tiling.

Externally, to the rear, you will find a part lawned, part paved garden, offering ample space for activities and relaxation.

Living Room

9'7" x 13'0" (2.93 x 3.98)

Lounge

13'1" x 12'5" (3.99 x 3.81)

Kitchen Diner

9'3" x 17'5" (2.83 x 5.32)

Bedroom One

12'2" x 10'10" (3.73 x 3.31)

Bedroom Two

10'9" x 11'0" (3.30 x 3.36)

Bedroom Three

5'7" x 8'10" (1.71 x 2.70)

Bathroom

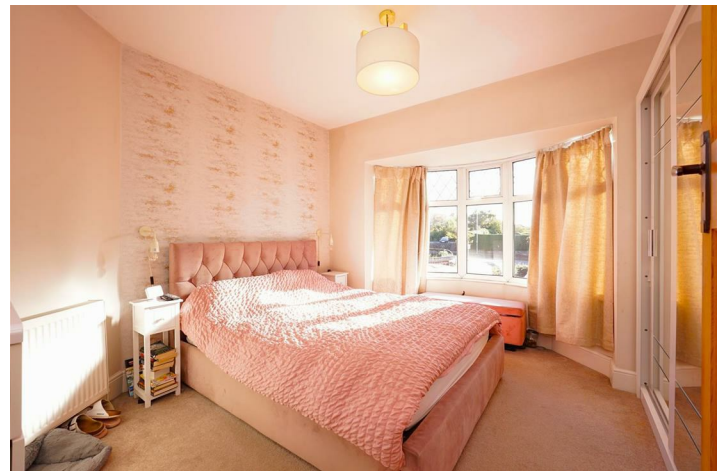
8'10" x 5'5" (2.70 x 1.67)

Garage

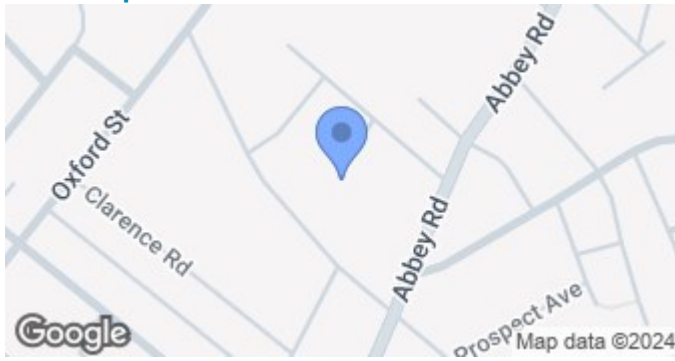
17'7" x 8'3" (5.38 x 2.52)



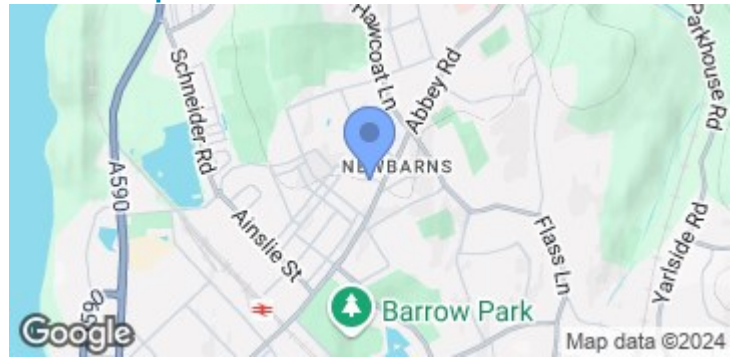
- Semi-Detached
- Three Bedrooms
- Lovely Décor Throughout
- Garage And Off Road Parking
- Gas Central Heating
- Cul-De-Sac Location
- Ideal Family Home
- Garden To Front And Rear
 - Double Glazing
 - Council Tax Band - C



Road Map



Terrain Map



Floor Plan



Corrie and Co aim to sell your property, at the best possible price, in the shortest possible time. We have developed a clear marketing strategy, over many years, to ensure your property is exposed to all social media platforms, Rightmove, Zoopla and our own Corrie and Co website.

We also offer:

- Professional Photography
- Full promotion, throughout all our branches
- Experienced, qualified, friendly staff
- Full viewing service with feedback

To ensure your move is stress free, we can help with Mortgage advice. We work alongside local Solicitors, offering competitive conveyancing services.

We are local, family run business who are wholly independent which means we can recommend services to most suit your needs. Our aim is to provide quality advice and expertise at all times, so you can make an informed decision.

