

CorrieandCo

INDEPENDENT SALES & LETTING AGENTS



57 West View Road

Barrow-In-Furness, LA14 5AW

Offers In The Region Of £130,000



2



1



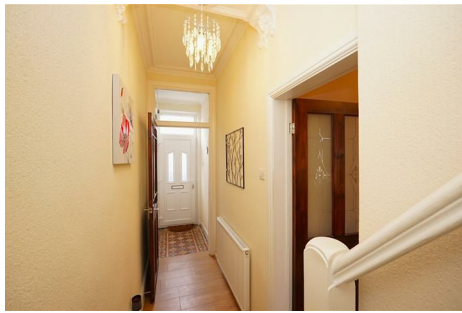
1



57 West View Road

Barrow-In-Furness, LA14 5AW

Offers In The Region Of £130,000



This two bedroom terrace is ideally situated in a popular location close to various amenities, making it perfect for a range of buyers. Ready to move into, the home features neutral decor throughout, blending modern comfort with traditional features.

As you enter the property you arrive into the hallway which provides access to the lounge diner and staircase. The hallway has been fitted with Quarry tiled flooring and wood effect flooring. The lounge diner is an open plan room. The lounge area has been neutrally decorated with painted walls, a feature wall and fitted with carpeting. The dining area has been fitted with wood effect flooring and coordinating decor to the lounge. The kitchen has been fitted with shaker style wall and base units with wood effect work surfaces. The integrated appliances include a single oven, gas hob and stainless steel extractor fan, there is also ample space for freestanding appliances.

To the first floor there are two bedrooms, a utility and a bathroom. The first bedroom is situated to the front aspect of the property and is a spacious room which has been neutrally decorated with painted walls, a feature wall and carpeting. The second bedroom is another generously sized room which has also been neutrally decorated with painted walls and fitted with carpeting. The utility room is a great addition to the property and has work surfaces and space for freestanding appliances. The bathroom has been fitted with a three piece suite comprising of a WC, vanity sink and a bath with an over bath thermostatic shower attachment.

To the rear of the property there is a generous sized yard ideal for outdoor seating, relaxation or storage.

Lounge Diner

12'11" x 21'7" (3.94 x 6.58)

Kitchen

13'10" x 7'7" (4.22 x 2.33)

Utility Room

4'10" x 5'4" (1.48 x 1.65)

Bedroom One

16'4" x 10'2" (5.00 x 3.12)

Bedroom Two

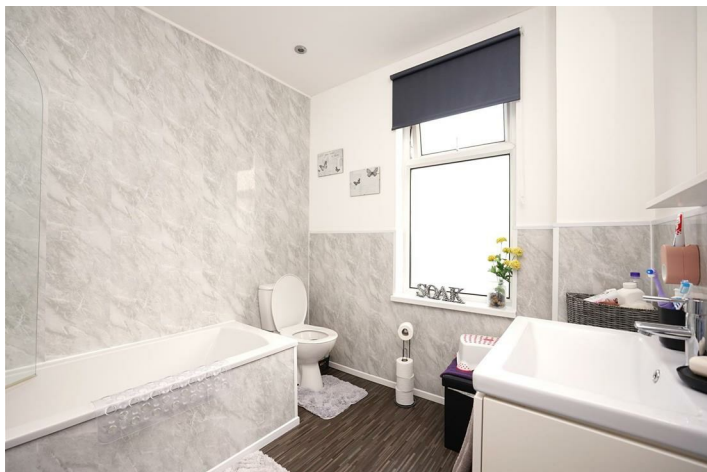
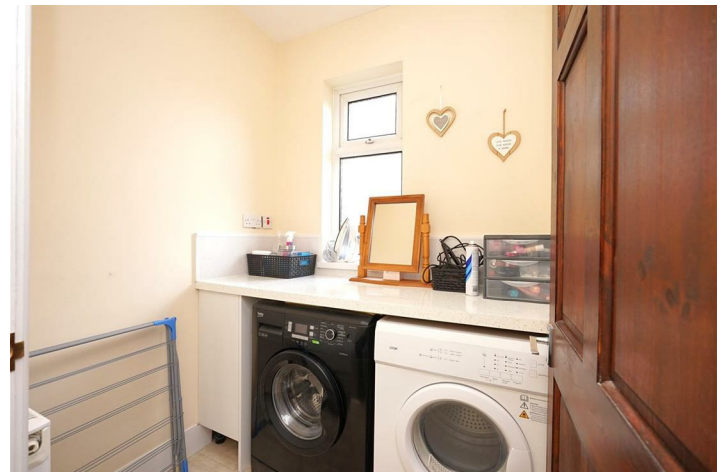
10'9" x 10'11" (3.30 x 3.35)

Bathroom

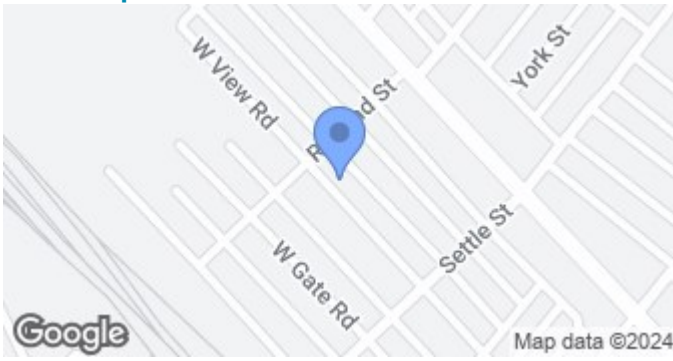
7'8" x 8'0" (2.34 x 2.45)



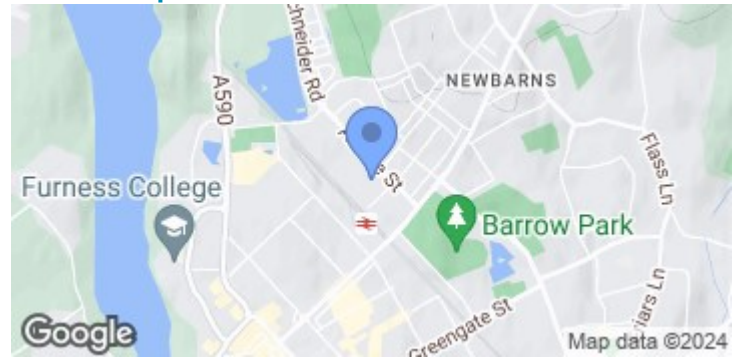
- Ideal for a Range of Buyers
 - Rear Yard
 - Close to Amenities
 - Gas Central Heating
- Popular Location
- Neutral Decor Throughout
 - Double Glazing
 - Council Tax Band - A



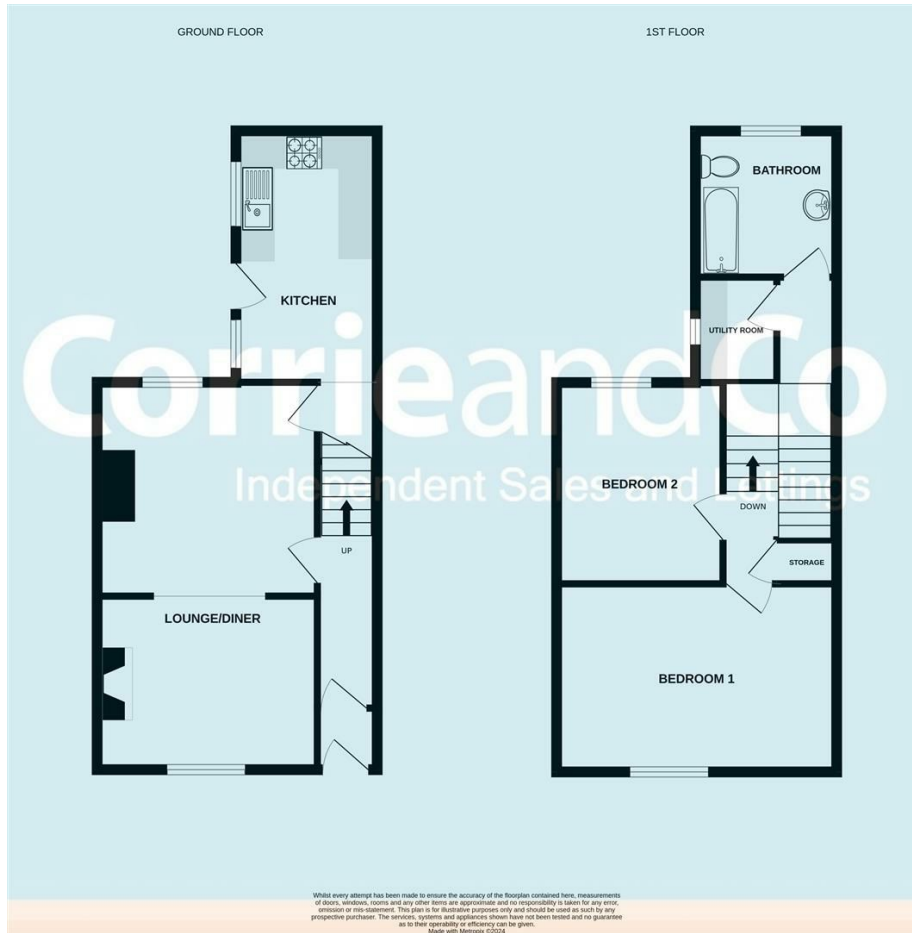
Road Map



Terrain Map



Floor Plan



Corrie and Co aim to sell your property, at the best possible price, in the shortest possible time. We have developed a clear marketing strategy, over many years, to ensure your property is exposed to all social media platforms, Rightmove, Zoopla and our own Corrie and Co website.

We also offer:

- Professional Photography
- Full promotion, throughout all our branches
- Experienced, qualified, friendly staff
- Full viewing service with feedback

To ensure your move is stress free, we can help with Mortgage advice. We work alongside local Solicitors, offering competitive conveyancing services.

We are local, family run business who are wholly independent which means we can recommend services to most suit your needs. Our aim is to provide quality advice and expertise at all times, so you can make an informed decision.

