



31 Victoria Park

Ulverston, LA12 7TT

Offers In The Region Of £129,250



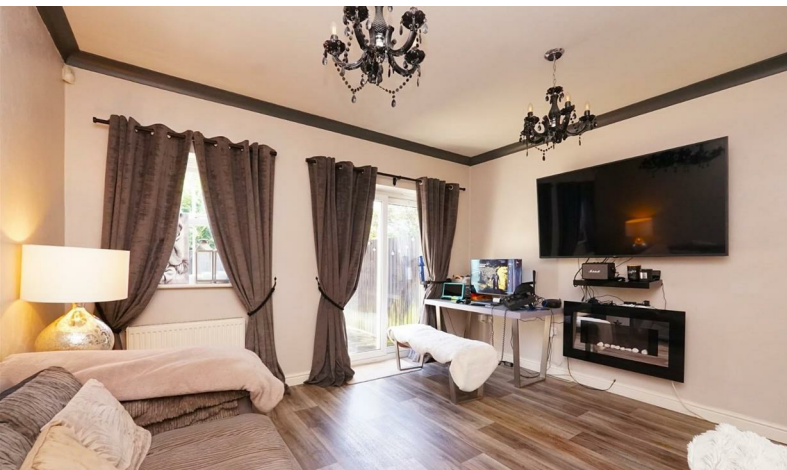
2



1



1



31 Victoria Park

Ulverston, LA12 7TT

Offers In The Region Of £129,250



This charming two-bedroom mews house in Ulverston offers an excellent opportunity for first-time buyers or those seeking a low-cost, affordable home in a desirable location. Situated in a quiet residential area, the property features a bright and spacious living area, a modern kitchen, two well-proportioned bedrooms, and a family bathroom. With a low-maintenance garden area and off-street parking, it combines comfort and practicality. Within walking distance of local amenities, schools, and public transport, this home provides great value in one of Cumbria's most picturesque market towns.

Entrance Hall

12'11" x 6'4" (3.944 x 1.934)

Living Room

13'2" x 12'8" (4.029 x 3.863)

Ground Floor WC

4'8" x 2'11" (1.428 x 0.901)

Kitchen

12'9" x 6'6" (3.900 x 1.990)

Bathroom

7'7" x 6'4" (2.332 x 1.949)

Landing

6'6" x 5'3" (1.987 x 1.618)

Bedroom One

10'4" x 9'11" (3.154 x 3.034)

Bedroom Two

11'5" x 7'2" (3.486 x 2.187)



- Town Centre Location
- Two Bedrooms
- Off Road Parking

- Low Cost Affordable Housing - 55% Market Share
- Rear Garden Area
- Council Tax Band



Road Map



Terrain Map



Floor Plan

Corrie and Co aim to sell your property, at the best possible price, in the shortest possible time. We have developed a clear marketing strategy, over many years, to ensure your property is exposed to all social media platforms, Rightmove, Zoopla and our own Corrie and Co website.

- We also offer:
- Professional Photography
 - Full promotion, throughout all our branches
 - Experienced, qualified, friendly staff
 - Full viewing service with feedback

To ensure your move is stress free, we can help with Mortgage advice. We work alongside local Solicitors, offering competitive conveyancing services. We are local, family run business who are wholly independent which means we can recommend services to most suit your needs. Our aim is to provide quality advice and expertise at all times, so you can make an informed decision.

