



Flat 3, Trinity House Princes Street

Ulverston, LA12 7NB

Offers In The Region Of £220,000



2



1



1



G



Flat 3, Trinity House Princes Street

Ulverston, LA12 7NB

Offers In The Region Of £220,000



This Grade II listed two-bedroom flat seamlessly combines historic charm with modern comforts, offering a unique and inviting living space. Ideally situated close to town, the property boasts a stunning Georgian-style window that fills the light-filled interior with natural warmth and period character. The thoughtful layout maximises functionality, while the inclusion of a cellar provides valuable additional storage, enhancing the practicality of this delightful home.

Entering the property from a courtyard with allocated parking, you step through the front door into an impressive entrance hall. This space provides access to the apartment as well as the cellar area. A staircase leads up to the apartment's front door, where you are greeted by a central hallway offering access to all rooms.

To the left, you'll find a spacious kitchen with a mix of fitted appliances, living and dining room, beautifully decorated with large secondary-glazed windows that create a light and airy ambiance. Continuing clockwise, the first bedroom is a generous double with a charming period fireplace and a large window.

The bathroom, located between the two bedrooms, features a three-piece suite, wooden flooring, tiled walls, and a heated towel rail. At the rear of the property, Bedroom Two offers another period fireplace and a large window. This versatile room can comfortably accommodate a double bed.

Cellar

14'1" x 12'0" (4.31 x 3.67)

Kitchen

9'2" x 12'10" (2.80 x 3.93)

Living Room

23'3" x 13'0" (7.09 x 3.98)

Entrance Hall

12'7" x 3'6" (3.86 x 1.08)

Bedroom One

12'6" x 12'4" (3.82 x 3.76)

Bedroom Two

13'7" x 11'8" (4.16 x 3.58)

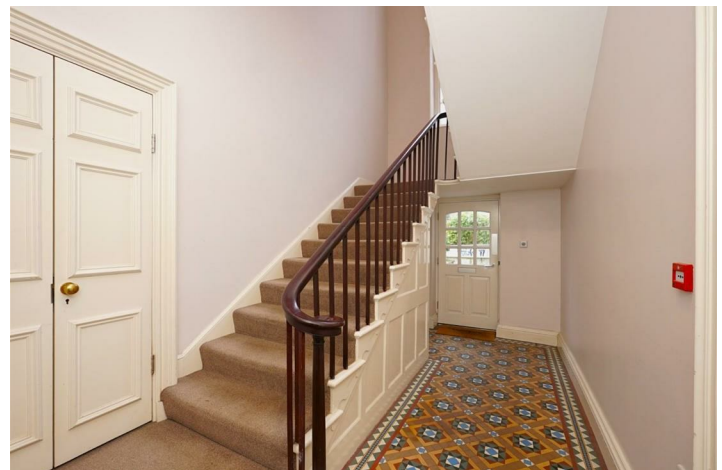
Bathroom

7'9" x 5'8" (2.37 x 1.73)

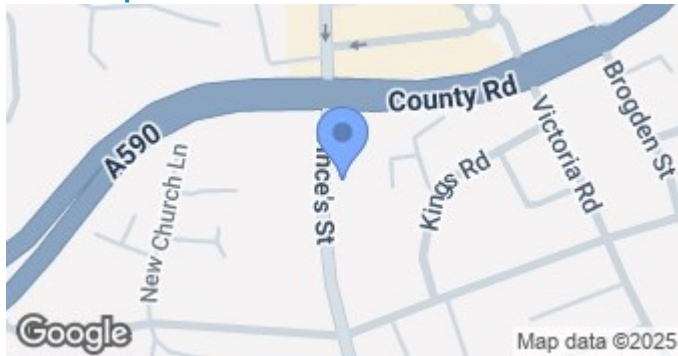


- Grade 2 Listed
- Excellent Location
- Two Bedrooms
- Management Charges £100 pcm

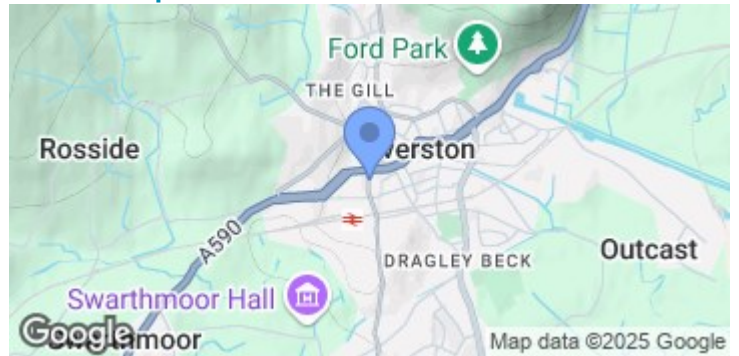
- Leasehold
- Charming original features
- Cellar for Storage
- Council Tax Band B



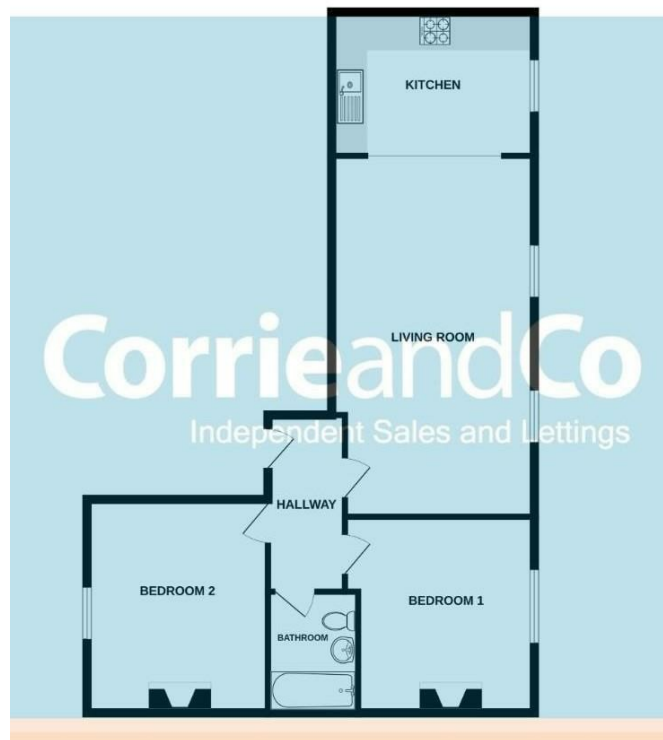
Road Map



Terrain Map



Floor Plan



While every attempt has been made to ensure the accuracy of the floorplan contained here, measurements of doors, windows, rooms and any other items are approximate and no responsibility is taken for any error, omission or misstatement. This plan is for illustrative purposes only and should be used as such by any prospective purchaser. The services, systems and appliances shown have not been tested and no guarantee as to their operability or efficiency can be given.
Made with Metropix i2024

Corrie and Co aim to sell your property, at the best possible price, in the shortest possible time. We have developed a clear marketing strategy, over many years, to ensure your property is exposed to all social media platforms, Rightmove, Zoopla and our own Corrie and Co website.

We also offer:

- Professional Photography
- Full promotion, throughout all our branches
- Experienced, qualified, friendly staff
- Full viewing service with feedback

To ensure your move is stress free, we can help with Mortgage advice. We work alongside local Solicitors, offering competitive conveyancing services.

We are local, family run business who are wholly independent which means we can recommend services to most suit your needs. Our aim is to provide quality advice and expertise at all times, so you can make an informed decision.

