

CorrieandCo

INDEPENDENT SALES & LETTING AGENTS



West Shieling Steel Street

Ulverston, LA12 9DU

Offers In The Region Of £195,000



West Shieling Steel Street

Ulverston, LA12 9DU

Offers In The Region Of £195,000



Situated in a very popular residential area of Ulverston, this semi detached bungalow has been renovated with a full re-wire, full replumb, New bathroom, kitchen and doors. There is a new gas combi boiler within the property. The property has a large kitchen dinner which is a great space for entertaining or family dining, along side two bedrooms. The outdoor space wraps around half of the property.

Situated in a very popular residential area of Ulverston, this semi detached bungalow has been renovated with a full re-wire, full replumb, new bathroom, kitchen and doors. As you enter the property you are in the newly renovated kitchen diner, with ample amount of space for family dining or entertaining guests. The kitchen has plenty of storage with units on the floor and the wall, with a traditional brown laminate work top and built in cooker.

The two bedrooms are sizeable with neutral decor which makes them a great space to add your personal touch to each room, one with a built in wardrobe. The outdoor space could be converted into a private driveway, it also offers lots of space for children to play or having family round.

Through out the property there is new windows and door, as well as a new gas combi boiler within.

Hallway

8'7" x 3'3" (2.617 x 0.997)

Kitchen Diner

17'10" x 17'7" (5.443 x 5.370)

Bedroom One

15'2" x 8'1" (4.633 x 2.474)

Bedroom Two

11'5" x 9'1" (3.503 x 2.781)

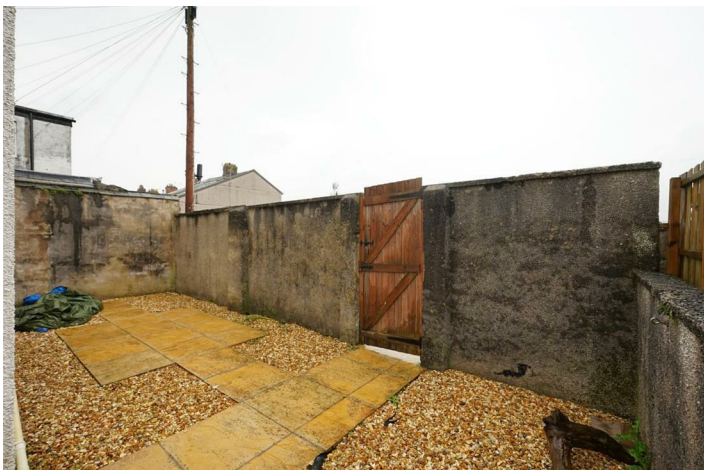
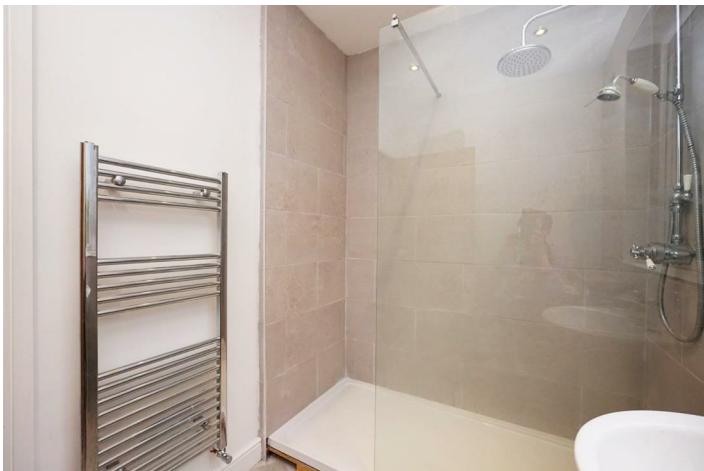
Shower Room

8'6" x 5'7" (2.607 x 1.725)

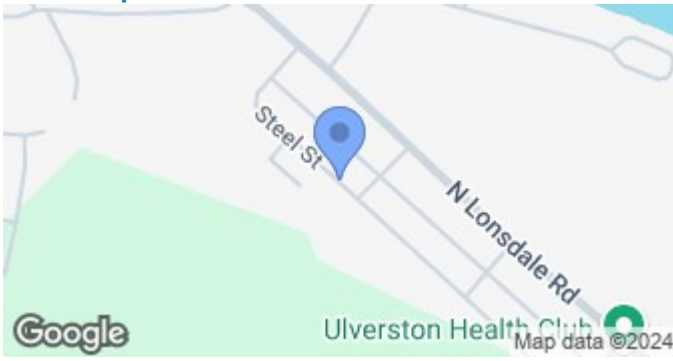


- Semi Detached Bungalow
 - Modern Renovation
- Full Re-Wire & Re-Plumb
 - New Bathroom
 - Out Door Space

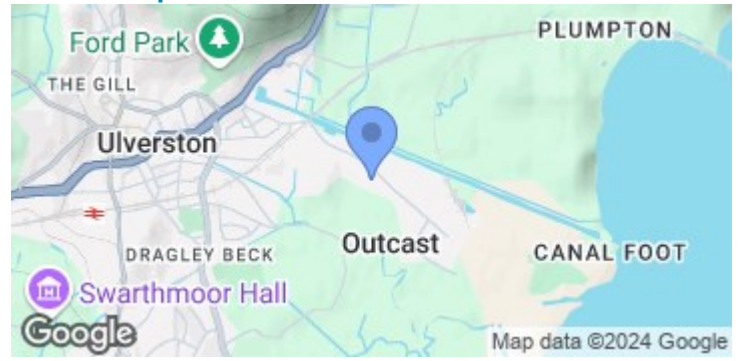
- Two bedrooms
 - New Boiler
- Potential to develop loft space
 - New Kitchen
 - Council Tax B



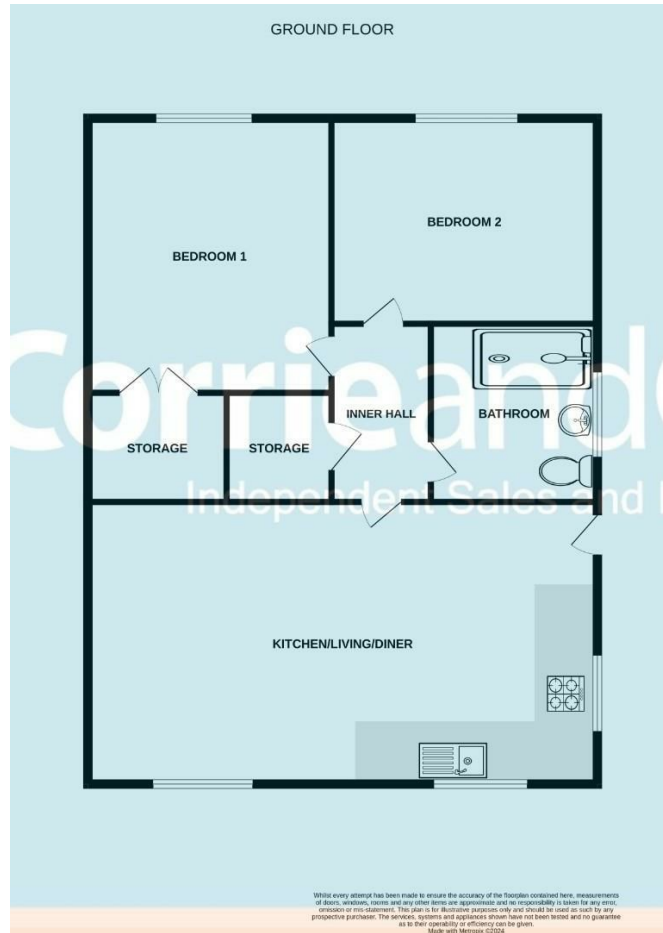
Road Map



Terrain Map



Floor Plan



Corrie and Co aim to sell your property, at the best possible price, in the shortest possible time. We have developed a clear marketing strategy, over many years, to ensure your property is exposed to all social media platforms, Rightmove, Zoopla and our own Corrie and Co website.

We also offer:

- Professional Photography
- Full promotion, throughout all our branches
- Experienced, qualified, friendly staff
- Full viewing service with feedback

To ensure your move is stress free, we can help with Mortgage advice. We work alongside local Solicitors, offering competitive conveyancing services.

We are local, family run business who are wholly independent which means we can recommend services to most suit your needs. Our aim is to provide quality advice and expertise at all times, so you can make an informed decision.

