

CorrieandCo

INDEPENDENT SALES & LETTING AGENTS



6 Chapel Street

Ulverston, LA12 0BA

Offers In The Region Of £195,000



2



1



2



6 Chapel Street

Ulverston, LA12 0BA

Offers In The Region Of £195,000



Discover the epitome of charm and comfort in this delightful 2-bedroom stone-fronted mid-terrace home, offering the ideal blend of character and modern convenience. With no chain holding you back, this gem is ready and waiting to become your new home. Say hello to hassle-free parking with your very own garage located at the rear of the property. Whether you're a savvy investor looking to add to your portfolio or a first-time buyer ready to embark on the homeownership journey, this property ticks all the boxes. Situated in a desirable area, close to amenities, schools, and transportation links, this home offers the perfect balance of convenience and tranquility.

As you step through the front door, you're greeted by the entrance hall adorned with characterful Victorian flooring. Follow the hallway into the heart of the home, where the open-plan lounge diner beckons you to unwind and entertain in style. Enjoy cosy evenings by the fireplace, with alcoves adding a touch of character to the space. Next, let's explore the kitchen where some modernisation is required; a perfect opportunity to create your dream space. There is also additional storage provided by a pantry and under stair cupboard - organizing your kitchen essentials has never been easier. Step outside into the yard, a versatile outdoor space perfect for enjoying sunny days or hosting summer barbecues. Beyond the yard lies the practical garage, offering secure storage for your vehicle and additional belongings, with convenient access to the back street.

Venture upstairs to discover the first floor, where comfort and relaxation await in the form of two spacious double bedrooms. With plenty of room to accommodate your furniture and personal touches, these bedrooms provide the perfect retreat at the end of a long day. Completing the first floor is the four-piece bathroom suite, offering a space to unwind and rejuvenate. Whether you prefer a leisurely soak in the bathtub or a refreshing shower, this bathroom has everything you need to pamper yourself in style.

Living Room

10'0" x 10'0" (3.072 x 3.059)

Dining Room

10'11" x 10'9" (3.343 x 3.297)

Kitchen and Pantry

12'4" x 6'10" (3.767 x 2.108)

Landing

10'9" x 4'6" (3.292 x 1.395)

Bedroom One

13'8" x 10'0" (4.171 x 3.060)

Bedroom Two

10'10" x 8'7" (3.313 x 2.619)

Bathroom

11'7" x 6'11" (3.531 x 2.123)

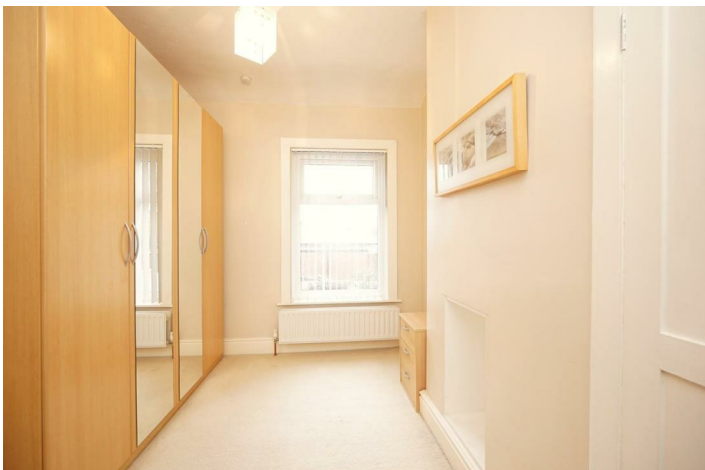
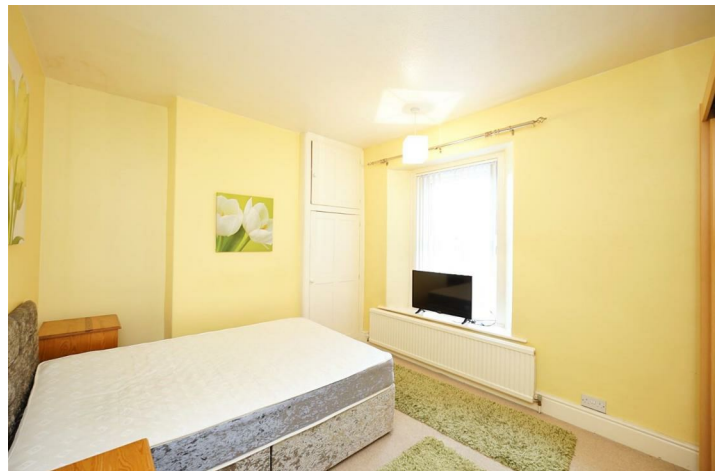
Garage

16'8" x 7'6" (5.092 x 2.299)

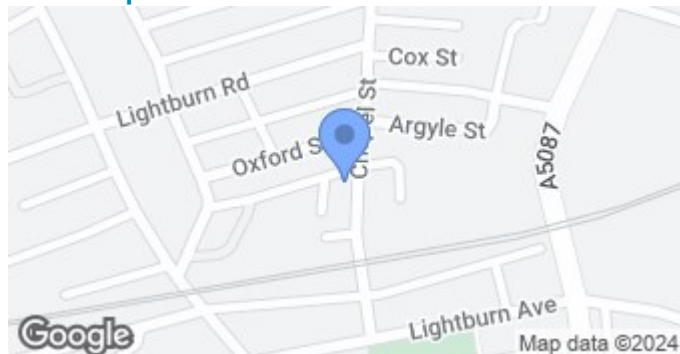


- No Chain
- Ideal First Home or Investment
 - Close to Amenities
 - Council Tax Band - B

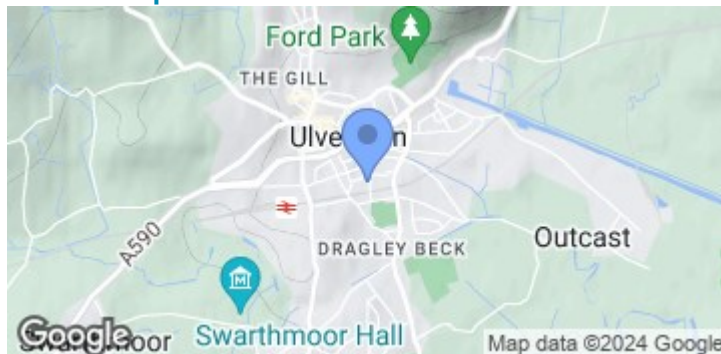
- Spacious Living Throughout
- Attached Garage at the Rear
 - Characterful Features



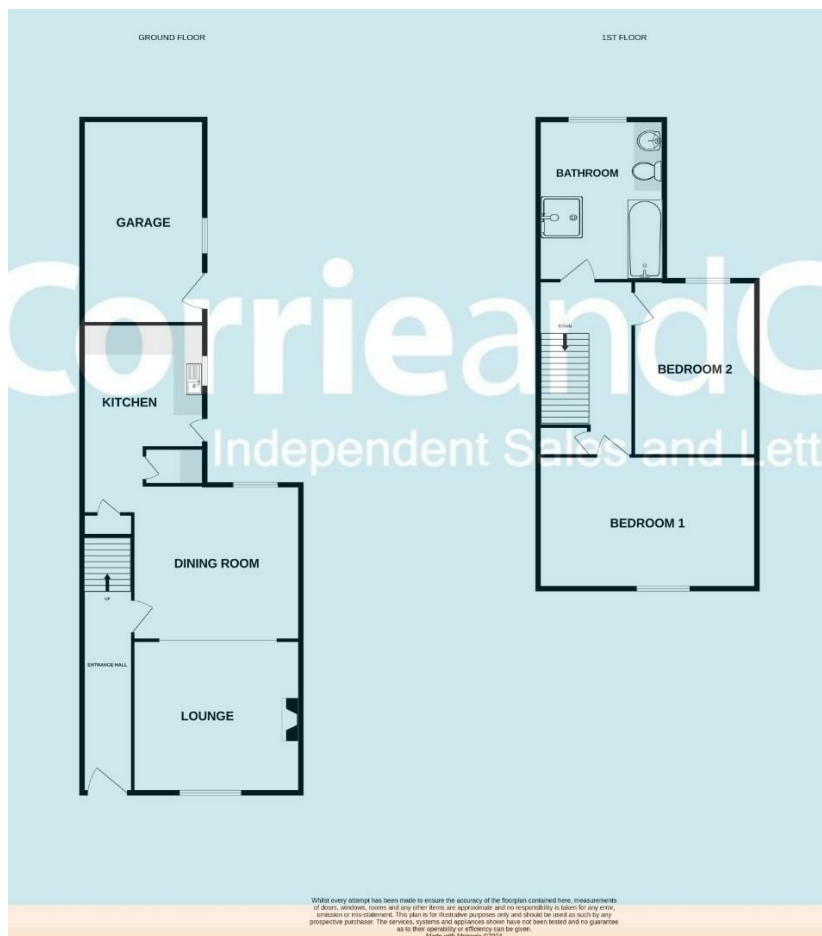
Road Map



Terrain Map



Floor Plan



Corrie and Co aim to sell your property, at the best possible price, in the shortest possible time. We have developed a clear marketing strategy, over many years, to ensure your property is exposed to all social media platforms, Rightmove, Zoopla and our own Corrie and Co website.

We also offer:

- Professional Photography
- Full promotion, throughout all our branches
- Experienced, qualified, friendly staff
- Full viewing service with feedback

To ensure your move is stress free, we can help with Mortgage advice. We work alongside local Solicitors, offering competitive conveyancing services.

We are local, family run business who are wholly independent which means we can recommend services to most suit your needs. Our aim is to provide quality advice and expertise at all times, so you can make an informed decision.

