



## A WELL PRESENTED THREE BEDROOM DETACHED FAMILY HOME

Cranbourne Road, Northwood, Middlesex, HA6 1JZ

**ROBSONS**



Cranbourne Road, Northwood, Middlesex, HA6 1JZ

**DETACHED • THREE BEDROOMS, EACH WITH  
FITTED WARDROBES • SPACIOUS OPEN- PLAN  
LIVING/DINING ROOM • MODERN FITTED  
KITCHEN • MAIN BEDROOM WITH EN-SUITE •  
DOWNSTAIRS W/C • POTENTIAL TO EXTEND  
STPP • SOUGHT-AFTER LOCATION •  
DRIVEWAY PARKING & GARAGE • PRIVATE  
REAR GARDEN**

### Description

This highly desired three bedroom detached house is offered to the market with the benefit of further potential to extend subject to the usual planning permissions and consents. Positioned upon the sought-after Cranbourne Road, this rarely available property offers spacious and versatile accommodation.

Benefits include a garage, large flat rear garden and off street parking.

In addition, the property is only approximately a seven minute walk to Northwood Hills Metropolitan line station.







Northwood provides a range of shopping facilities including Waitrose supermarket, a variety of restaurants and other amenities with the Metropolitan Line station providing access to Baker Street and the City. There is a plethora of state and private schooling together with a wide choice of recreational facilities, which include golf courses and fitness centres. The M1, M40 and M25 motorways are also accessible.

NB this property is situated within the proximity of the ULEZ, if your vehicle does not comply charges may apply.

### **Additional Information**

Tenure: Freehold

Local Authority: London Borough of Hillingdon

Council Tax Band: E

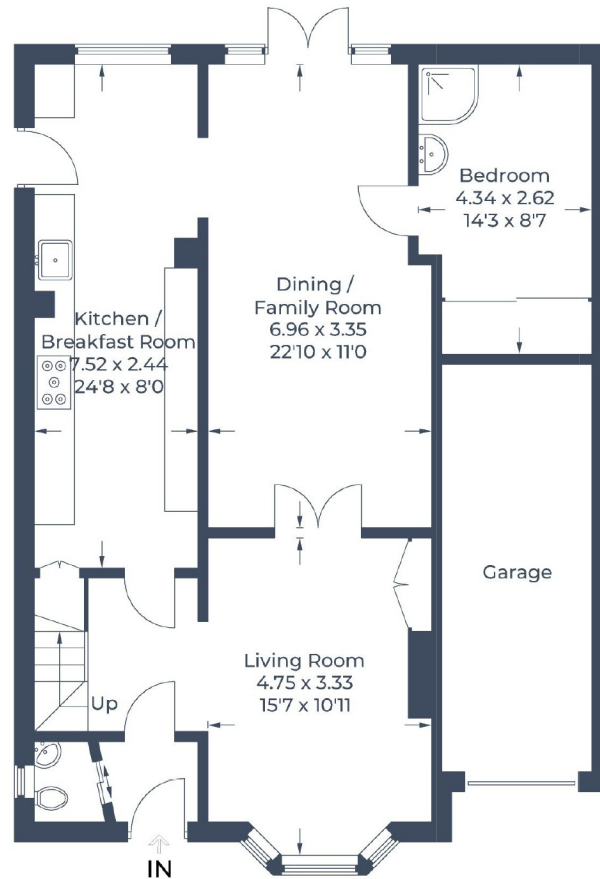
Energy Efficiency Rating: D

For additional information, please refer to [www.robsonswb.com](http://www.robsonswb.com) or call us on: 01923 835355.

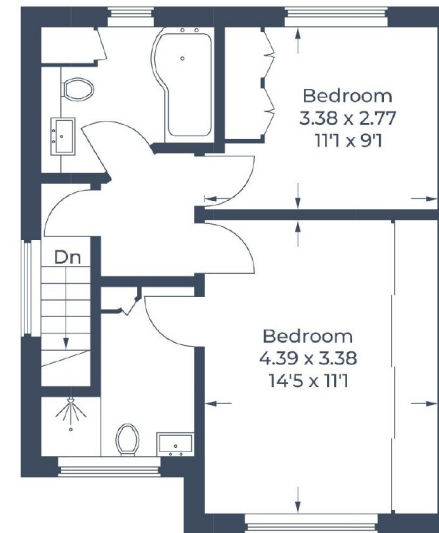




Approximate Gross Internal Area  
 Ground Floor = 79.3 sq m / 853 sq ft  
 First Floor = 41.3 sq m / 444 sq ft  
 Total = 120.6 sq m / 1,297 sq ft (Excluding Garage)



**Ground Floor**



**First Floor**

Illustration for identification purposes only,  
 measurements are approximate, not to scale.  
 © CJ Property Marketing Produced for Robsons

**ROBSONS**

7 Clive Parade, Northwood, HA6 2QF  
 Tel: 01923 835355 Email: northwood@robsonswb.com  
[www.robsonswb.com](http://www.robsonswb.com)

SCAN TO VISIT



OUR WEBSITE

Important notice: Robsons, their clients and any joint agents give notice that 1: They are not authorised to make or give any representations or warranties in relation to the property either here or elsewhere, either on their own behalf or on behalf of their client or otherwise. They assume no responsibility for any statement that may be made in these particulars. These particulars do not form part of any offer or contract and must not be relied upon as statements or representations of fact. 2: Any areas, measurements or distances are approximate. Plot sizes and dimensions are taken from Promap and are approximate. The text, photographs and plans are for guidance only and are not necessarily comprehensive. It should not be assumed that the property has all necessary planning, building regulation or other consents and Robsons have not tested any services, equipment or facilities. Purchasers must satisfy themselves by inspection or otherwise.