



A MODERN AND SPACIOUS FOUR BEDROOM DETACHED BUNGALOW

Hillside Road, Northwood, Middlesex, HA6 1PZ

ROBSONS

Hillside Road, Northwood, Middlesex, HA6 1PZ

DETACHED • FOUR BEDROOMS • THREE BATHROOMS • OPEN-PLAN KITCHEN/DINER/LIVING ROOM • UTILITY ROOM • STUDY/OFFICE • REAR GARDEN WITH OUTBUILDING • DRIVEWAY PARKING

Description

Positioned on the sought-after Hillside Road, this detached four-bedroom bungalow offers generous living space and versatile accommodation arranged over two floors.

The ground floor features a spacious open-plan kitchen/diner/living room, ideal for modern family living and entertaining. Complementing this is a useful utility room, a study/office, a stylish shower room and two well-proportioned bedrooms, one of which benefits from its own en-suite bathroom.

To the first floor are two further bright and airy bedrooms along with a modern family bathroom.

Outside, the property boasts a private rear garden complete with a covered patio area. An outbuilding provides additional leisure space, featuring a hot tub and shower room, while a separate shed offers practical storage.





To the front, a driveway provides convenient off-street parking.

Location

Northwood provides a range of shopping facilities including Waitrose supermarket, a variety of restaurants and other amenities with the Metropolitan Line station providing access to Baker Street and the City. There is a plethora of state and private schooling together with a wide choice of recreational facilities, which include golf courses and fitness centres. The M1, M40 and M25 motorways are also accessible.

NB this property is situated within the proximity of the ULEZ, if your vehicle does not comply charges may apply.

Additional Information

Tenure: Freehold

Local Authority: London Borough of Hillingdon

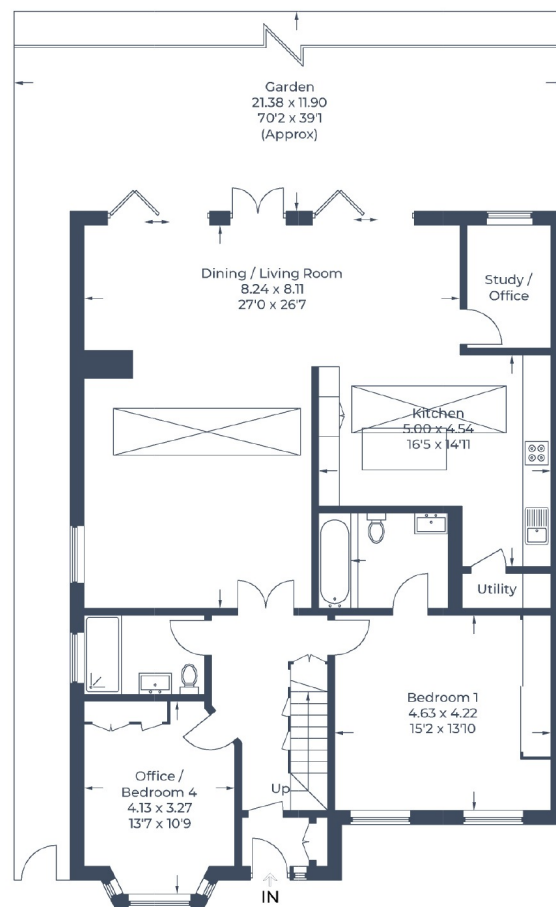
Council Tax Band: F

Energy Efficiency Rating: C

For additional information, please refer to www.robsonswb.com or call us on: 01923 835355.



Approximate Gross Internal Area = 194.2 sq m / 2,090 sq ft
 Outbuildings = 24.9 sq m / 269 sq ft
 Total = 219.1 sq m / 2,359 sq ft



Ground Floor

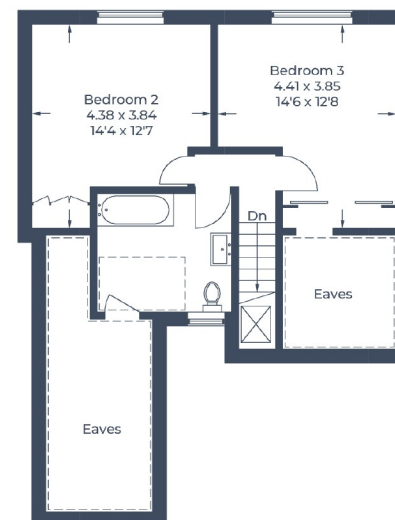


Outbuilding 1

(Not Shown In Actual Location / Orientation)

Outbuilding 2

(Not Shown In Actual Location / Orientation)



First Floor

Illustration for identification purposes only,
 measurements are approximate, not to scale.

© CJ Property Marketing

ROBSONS

7 Clive Parade, Northwood, HA6 2QF

Tel: 01923 835355 Email: northwood@robsonswb.com

www.robsonswb.com

SCAN TO VISIT



OUR WEBSITE

Important notice: Robsons, their clients and any joint agents give notice that 1: They are not authorised to make or give any representations or warranties in relation to the property either here or elsewhere, either on their own behalf or on behalf of their client or otherwise. They assume no responsibility for any statement that may be made in these particulars. These particulars do not form part of any offer or contract and must not be relied upon as statements or representations of fact. 2: Any areas, measurements or distances are approximate. Plot sizes and dimensions are taken from Promap and are approximate. The text, photographs and plans are for guidance only and are not necessarily comprehensive. It should not be assumed that the property has all necessary planning, building regulation or other consents and Robsons have not tested any services, equipment or facilities. Purchasers must satisfy themselves by inspection or otherwise.