



AN IMPRESSIVE DETACHED SEVEN BEDROOM FAMILY HOME

Kewferry Drive, Northwood, Middlesex, HA6 2NU

ROBSONS

Kewferry Drive, Northwood, Middlesex, HA6 2NU

**DETACHED • SEVEN BEDROOMS • SIX
BATHROOMS • FOUR RECEPTION ROOMS •
OVER 5,170 SQFT • LARGE REAR GARDEN •
DRIVEWAY PARKING • GARAGE**

Description

Positioned on one of Northwood's most popular gated, private, residential roads is this impressive detached seven bedroom, six bathroom detached family home. The property boasts over 5,170 sqft of spacious and modern accommodation set over three floors.

The property is set back from the road offering off street parking for multiple vehicles and access to the garaging.

To the rear is a private and secluded garden with a large terrace.

Internal viewing is essential to appreciate the quality and location of this beautiful family home.









Northwood provides a range of shopping facilities including Waitrose supermarket, a variety of restaurants and other amenities with the Metropolitan Line station providing access to Baker Street and the City. There is a plethora of state and private schooling together with a wide choice of recreational facilities, which include golf courses and fitness centres. The M1, M40 and M25 motorways are also accessible.

NB this property is situated within the proximity of the ULEZ, if your vehicle does not comply charges may apply.

Additional Information

Tenure: Freehold

Local Authority: London Borough of Hillingdon

Council Tax Band: H

Energy Efficiency Rating: C

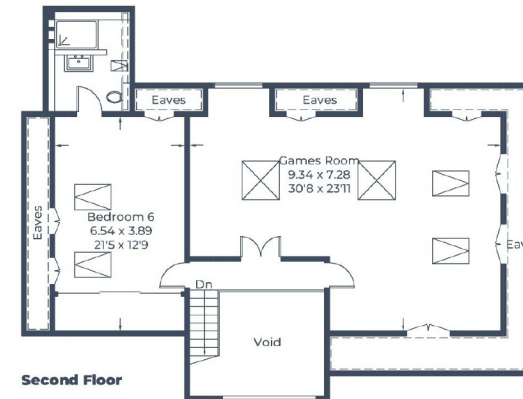
For additional information, please refer to www.robsonswb.com or call us on: 01923 835355.



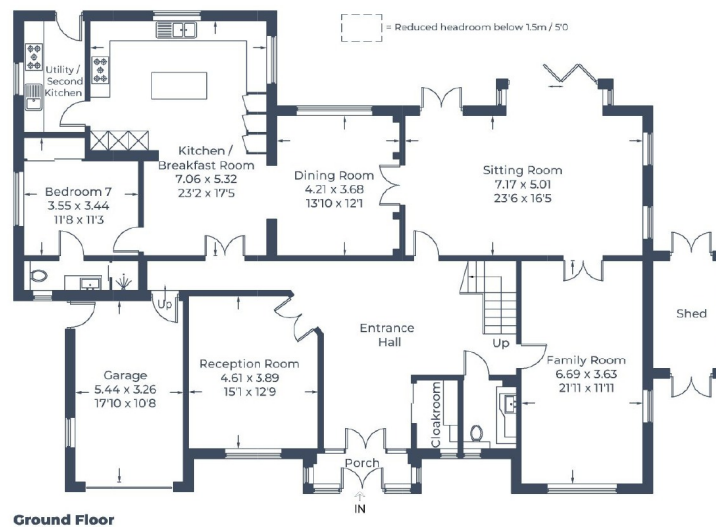
Approximate Gross Internal Area = 462.8 sq m / 4,981 sq ft (Excluding Void)

Garage = 17.9 sq m / 193 sq ft

Total = 480.7 sq m / 5,174 sq ft



Second Floor



Ground Floor



First Floor

Illustration for identification purposes only,
measurements are approximate, not to scale.
© CJ Property Marketing Produced for Robsons

ROBSONS

7 Clive Parade, Northwood, HA6 2QF

Tel: 01923 835355 Email: northwood@robsonswb.com

www.robsonswb.com

SCAN TO VISIT



OUR WEBSITE

Important notice: Robsons, their clients and any joint agents give notice that 1: They are not authorised to make or give any representations or warranties in relation to the property either here or elsewhere, either on their own behalf or on behalf of their client or otherwise. They assume no responsibility for any statement that may be made in these particulars. These particulars do not form part of any offer or contract and must not be relied upon as statements or representations of fact. 2: Any areas, measurements or distances are approximate. Plot sizes and dimensions are taken from Promap and are approximate. The text, photographs and plans are for guidance only and are not necessarily comprehensive. It should not be assumed that the property has all necessary planning, building regulation or other consents and Robsons have not tested any services, equipment or facilities. Purchasers must satisfy themselves by inspection or otherwise.