



## A PRESENTABLE TWO BEDROOM DETACHED FAMILY HOME

Treetops Close, Northwood, Middlesex, HA6 2PL

**ROBSONS**



Treetops Close, Northwood, Middlesex, HA6 2PL

**DETACHED • TWO BEDROOMS • ONE  
BATHROOM • LIVING ROOM • KITCHEN •  
DOWNSTAIRS W/C • PRIVATE REAR GARDEN •  
DRIVEWAY PARKING AND GARAGE •  
POTENTIAL TO EXTEND STPP • CHAIN FREE**

### Description

This charming detached house is offered to the market with the benefit of no onward chain.

Positioned within the rarely available Treetops Close, this detached property provides the potential to extend subject to planning permissions and consents and provides spacious and versatile accommodation.

The property benefits from a private and secluded rear garden, driveway and a garage.







Northwood provides a range of shopping facilities including Waitrose supermarket, a variety of restaurants and other amenities with the Metropolitan Line station providing access to Baker Street and the City. There is a plethora of state and private schooling together with a wide choice of recreational facilities, which include golf courses and fitness centres. The M1, M40 and M25 motorways are also accessible.

NB this property is situated within the proximity of the ULEZ, if your vehicle does not comply charges may apply.

### **Additional Information**

Tenure: Freehold

Local Authority: London Borough of Hillingdon

Council Tax Band: F

Energy Efficiency Rating: E

For additional information, please refer to [www.robsonswb.com](http://www.robsonswb.com) or call us on: 01923 835355.





Approximate Gross Internal Area  
 Ground Floor = 47.5 sq m / 511 sq ft  
 First Floor = 27.7 sq m / 298 sq ft  
 Garage = 14.0 sq m / 151 sq ft  
 Total = 89.2 sq m / 960 sq ft

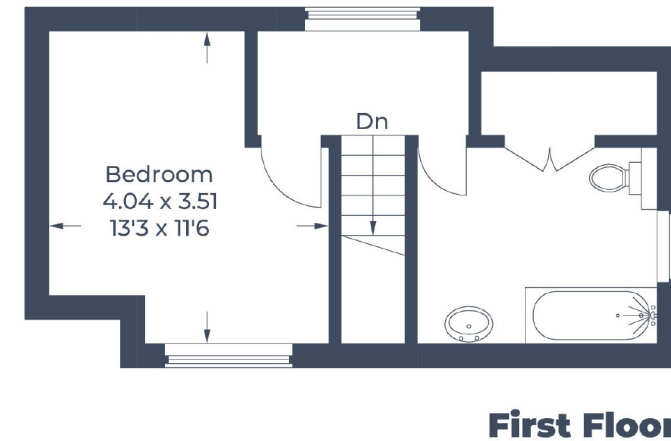
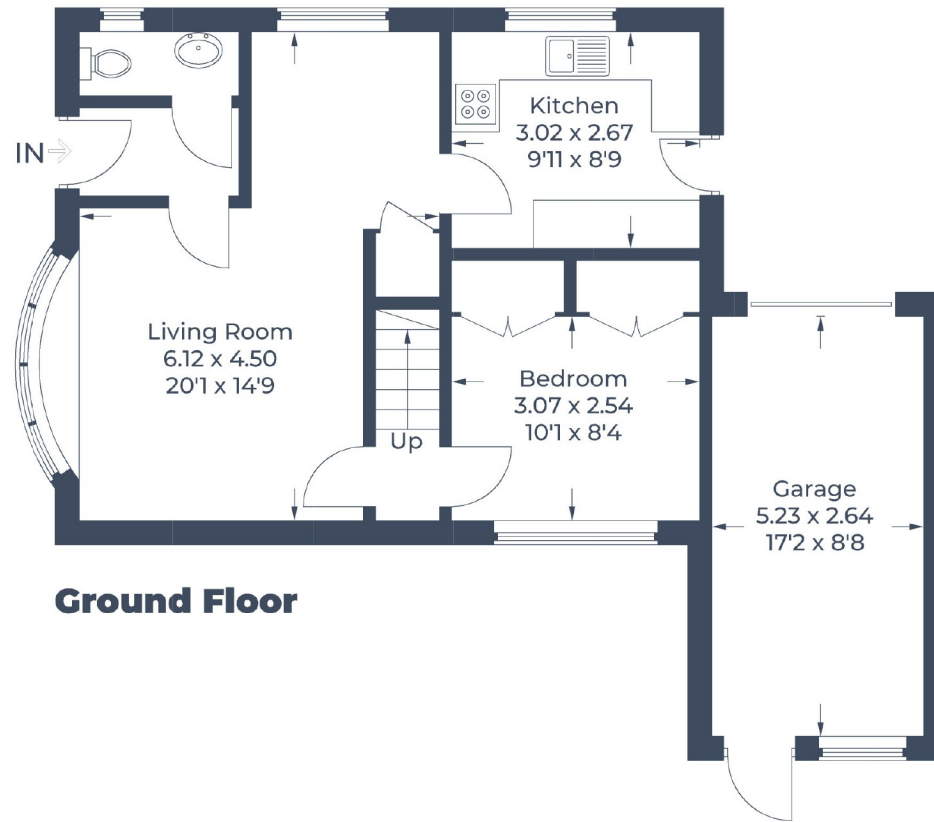


Illustration for identification purposes only,  
 measurements are approximate, not to scale.  
 © CJ Property Marketing Produced for Robsons

**ROBSONS**

7 Clive Parade, Northwood, HA6 2QF  
 Tel: 01923 835355 Email: northwood@robsonswb.com  
[www.robsonswb.com](http://www.robsonswb.com)

SCAN TO VISIT



OUR WEBSITE

Important notice: Robsons, their clients and any joint agents give notice that 1: They are not authorised to make or give any representations or warranties in relation to the property either here or elsewhere, either on their own behalf or on behalf of their client or otherwise. They assume no responsibility for any statement that may be made in these particulars. These particulars do not form part of any offer or contract and must not be relied upon as statements or representations of fact. 2: Any areas, measurements or distances are approximate. Plot sizes and dimensions are taken from Promap and are approximate. The text, photographs and plans are for guidance only and are not necessarily comprehensive. It should not be assumed that the property has all necessary planning, building regulation or other consents and Robsons have not tested any services, equipment or facilities. Purchasers must satisfy themselves by inspection or otherwise.