



**A WELL PRESENTED THREE BEDROOM DETACHED BUNGALOW WITHIN A QUIET  
CUL-DE-SAC**

Highfield Crescent, Northwood, HA6 1EZ

**ROBSONS**



Highfield Crescent, Northwood, HA6 1EZ

**DETACHED BUNGALOW • THREE BEDROOMS**  
**• MODERN FITTED KITCHEN • SPACIOUS**  
**LIVING/DINING ROOM • GARAGE •**  
**DRIVEWAY PARKING • QUIET CUL-DE-SAC •**  
**NO ONWARD CHAIN**

### Description

A beautifully presented three bedroom detached bungalow positioned in a quiet cul de sac moments from the centre of Northwood. The property presents over 1,110 sqft of well-proportioned and modern living space.

The property is set back from the road offering off street parking and access to the garage, and to the rear has a mature well-stocked garden with a feature gazebo ideal for alfresco dining and entertaining.

The property is also available with the advantage of no onward chain.

Conveniently located, the property is only a 10-minute walk away from Northwood station.







Northwood provides a range of shopping facilities, including Waitrose supermarket, a variety of restaurants and other amenities, with the Metropolitan Line station providing access to Baker Street and the City. There is a plethora of state and private schooling together with a wide choice of recreational facilities, which include golf courses and fitness centres. The M1, M40 and M25 motorways are also accessible.

NB this property is situated within the proximity of the ULEZ, if your vehicle does not comply, charges may apply.

### **Additional Information**

Tenure: Freehold

Local Authority: London Borough of Hillingdon

Council Tax Band: F

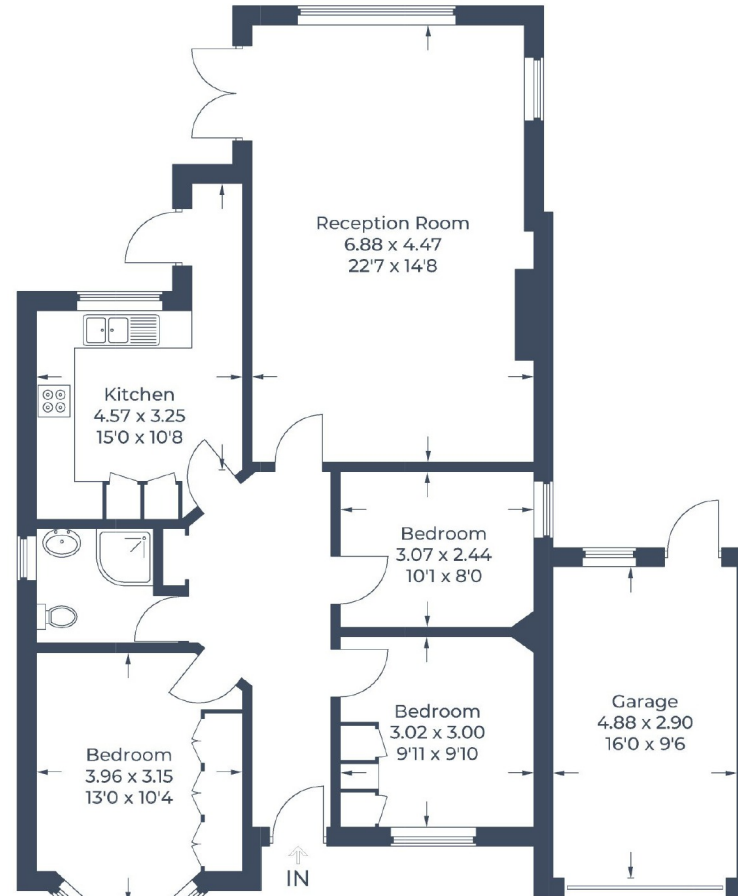
Energy Efficiency Rating: D

For additional information, please refer to [www.robsonswb.com](http://www.robsonswb.com) or call us on: 01923 835355.





Approximate Gross Internal Area  
Ground Floor = 89.1 sq m / 959 sq ft  
Garage = 14.3 sq m / 154 sq ft  
Total = 103.4 sq m / 1,113 sq ft



**Ground Floor**

Illustration for identification purposes only,  
measurements are approximate, not to scale.  
© CJ Property Marketing Produced for Robsons

**ROBSONS**

7 Clive Parade, Northwood, HA6 2QF  
Tel: 01923 835355 Email: northwood@robsonswb.com

[www.robsonswb.com](http://www.robsonswb.com)

SCAN TO VISIT



OUR WEBSITE

Important notice: Robsons, their clients and any joint agents give notice that 1: They are not authorised to make or give any representations or warranties in relation to the property either here or elsewhere, either on their own behalf or on behalf of their client or otherwise. They assume no responsibility for any statement that may be made in these particulars. These particulars do not form part of any offer or contract and must not be relied upon as statements or representations of fact. 2: Any areas, measurements or distances are approximate. Plot sizes and dimensions are taken from Promap and are approximate. The text, photographs and plans are for guidance only and are not necessarily comprehensive. It should not be assumed that the property has all necessary planning, building regulation or other consents and Robsons have not tested any services, equipment or facilities. Purchasers must satisfy themselves by inspection or otherwise.