



## IMPRESSIVE SEVEN BEDROOM DETACHED FAMILY HOME

Wellesley Avenue, Northwood, Middlesex, HA6 3HY

**ROBSONS**



## SEVEN BEDROOM FAMILY HOME FINISHED TO A HIGH STANDARD

**DETACHED • SEVEN BEDROOMS • FOUR  
SHOWER ROOMS • THREE FLOORS • GATED  
COVERED PARKING • PRIVATE REAR GARDEN  
• STEAM SAUNA FACILITY • UNDERGROUND  
HEATING THROUGHOUT •**

A property of outstanding quality. This beautiful detached family home has been sympathetically and skilfully extended and refurbished to exacting standards throughout, providing seven bedrooms, four shower rooms and positioned moments from the centre of Northwood.

The property boasts over 3200 sqft of accommodation set over three floors. The property provides flexible living space, especially to the ground floor which benefits from a large bedroom suite with an en suite, a steam sauna facility and French doors leading to the private rear garden. A particular feature of the property is the luxurious kitchen/dining room with a beautiful vaulted ceiling.

Externally, the property provides covered and gated off street parking for multiple vehicles. To the rear is an enclosed private garden that has been landscaped for easy maintenance.







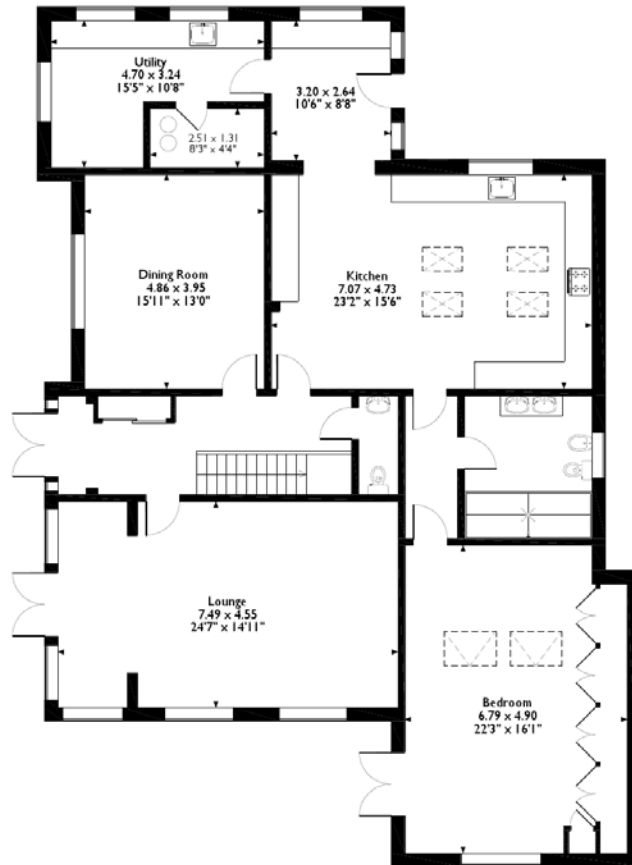
Northwood provides a range of shopping facilities, a Waitrose supermarket, restaurants and the Metropolitan Line Station providing access to Baker Street and the city beyond. The area has a range of both private and state schools. Places of worship and recreational facilities are also well catered for in the surrounding area and major motorway links to M25 and M1 are nearby.

NB this property is situated within the proximity of the ULEZ, if your vehicle does not comply charges may apply.

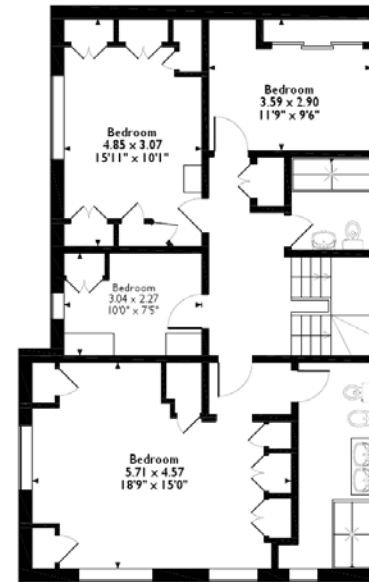
Tenure: Freehold      Local Authority: Three Rivers  
Energy Efficiency Rating: Band C  
Council Tax: Band G



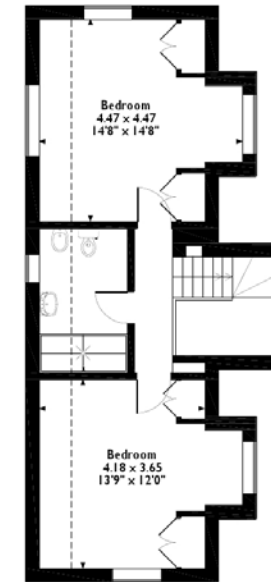
Wellesley Avenue, Northwood  
Approximate Gross Internal Area  
306 Sq M/3294 Sq Ft



Ground Floor



First Floor



Second Floor

Please note that the location of doors, windows and other items are approximate and this floorplan is to be used for illustrative purposes only. Unauthorized reproduction is prohibited.

**ROBSONS**

Address 7 Clive Parade, Northwood, Middlesex, HA6 2QF

Tel: 01923 835355 northwood@robsonswb.com

[www.robsonswb.com](http://www.robsonswb.com)

Important notice: Robsons, their clients and any joint agents give notice that 1: They are not authorised to make or give any representations or warranties in relation to the property either here or elsewhere, either on their own behalf or on behalf of their client or otherwise. They assume no responsibility for any statement that may be made in these particulars. These particulars do not form part of any offer or contract and must not be relied upon as statements or representations of fact. 2: Any areas, measurements or distances are approximate. Plot sizes and dimensions are taken from Promap and are approximate. The text, photographs and plans are for guidance only and are not necessarily comprehensive. It should not be assumed that the property has all necessary planning, building regulation or other consents and Robsons have not tested any services, equipment or facilities. Purchasers must satisfy themselves by inspection or otherwise.