



**AN IMPRESSIVE DETACHED FOUR BEDROOM FAMILY HOME WITHIN THE
COPSEWOOD ESTATE**

Copse Close, Northwood, Middlesex, HA6 2XG

ROBSONS

Copse Close, Northwood, Middlesex, HA6 2XG

DETACHED • 4 BEDROOMS • 4 RECEPTION ROOMS • OVER 8,600 SQFT • LARGE REAR GARDEN • DRIVEWAY PARKING • DOUBLE GARAGE • CUL DE SAC • COPSEWOOD ESTATE • AIR CONDITIONING

Description

This impressive detached family home boasts over 8,600 sqft of well-balanced accommodation set over three floors.

Positioned within a quiet cul de sac in the favourable Copsewood estate, this substantial property comprises four double bedrooms to the first floor, all with ensuite bathrooms and three with walk-in wardrobes.

To the second floor is a cinema room, gym with ensuite bathroom and a further office or store room.

To the ground floor there are four reception rooms, a kitchen/breakfast room, separate utility room and annex accommodation with independent access.

The property is set back from the road and accessed via carriage driveway providing off street parking for multiple vehicles and access to the double garage.









To the rear is a private southerly-orientated garden and large terrace perfect for outside entertaining.

Further benefits include air conditioning in three of the bedrooms, TV room and in the cinema room.

Location

Northwood provides a range of shopping facilities including Waitrose supermarket, a variety of restaurants and other amenities with the Metropolitan Line station providing access to Baker Street and the City. There is a plethora of state and private schooling together with a wide choice of recreational facilities, which include golf courses and fitness centres. The M1, M40 and M25 motorways are also accessible.

NB this property is situated within the proximity of the ULEZ, if your vehicle does not comply charges may apply.

Additional Information

Tenure: Freehold

Local Authority: London Borough of Hillingdon

Council Tax Band: H

Energy Efficiency Rating: C

For additional information, please refer to www.robsonswb.com or call us on: 01923 835355.



Approximate Gross Internal Area
 Ground Floor = 280.3 sq m / 3,017 sq ft
 First Floor = 273.1 sq m / 2,940 sq ft
 Second Floor = 247.8 sq m / 2,667 sq ft
 Total = 801.2 sq m / 8,624 sq ft
 (Including Eaves)

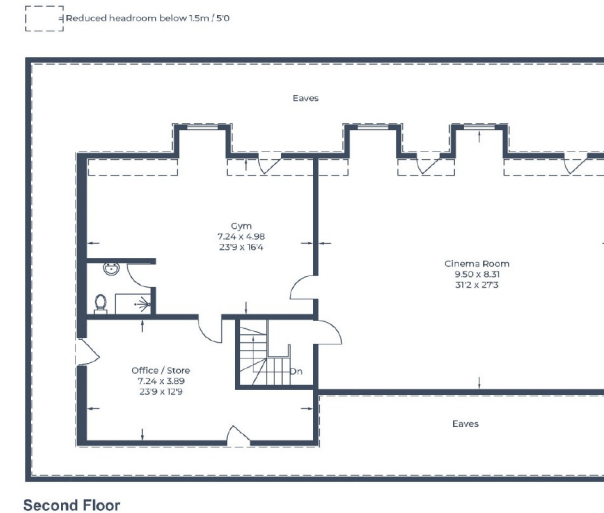
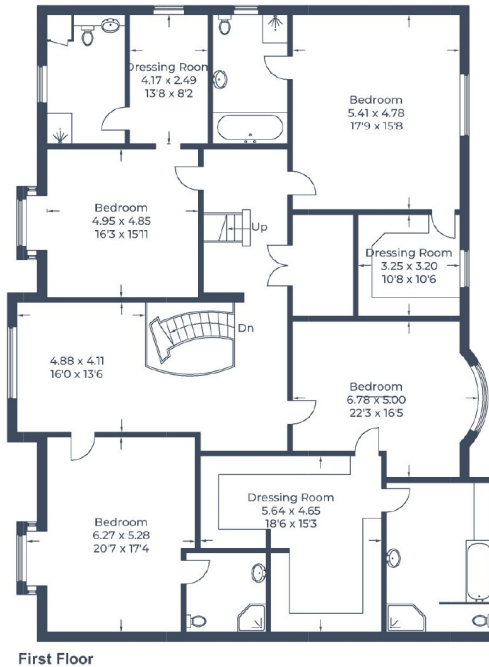
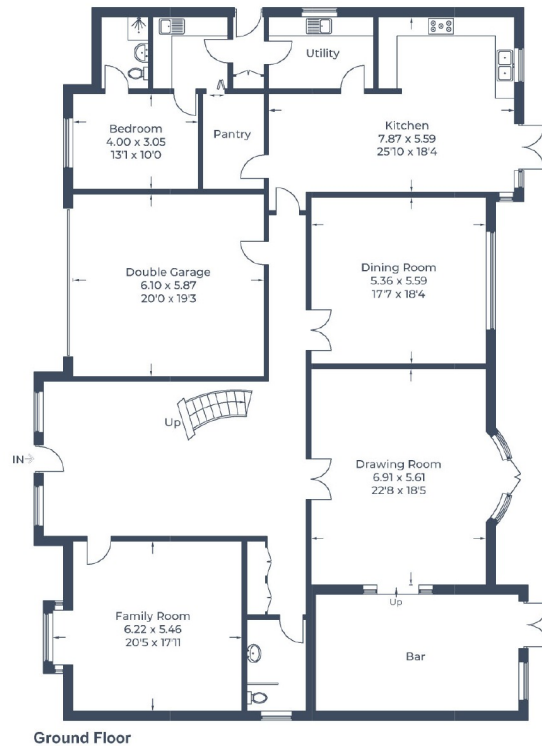


Illustration for identification purposes only,
 measurements are approximate, not to scale.
 © CJ Property Marketing



7 Clive Parade, Northwood, HA6 2QF
 Tel: 01923 835355 Email: northwood@robsonswb.com
www.robsonswb.com



Important notice: Robsons, their clients and any joint agents give notice that 1: They are not authorised to make or give any representations or warranties in relation to the property either here or elsewhere, either on their own behalf or on behalf of their client or otherwise. They assume no responsibility for any statement that may be made in these particulars. These particulars do not form part of any offer or contract and must not be relied upon as statements or representations of fact. 2: Any areas, measurements or distances are approximate. Plot sizes and dimensions are taken from Promap and are approximate. The text, photographs and plans are for guidance only and are not necessarily comprehensive. It should not be assumed that the property has all necessary planning, building regulation or other consents and Robsons have not tested any services, equipment or facilities. Purchasers must satisfy themselves by inspection or otherwise.