



SEMI-DETACHED THREE BEDROOM FAMILY HOME WITHIN A GATED MEWS

Ross Haven Place, Northwood, Middlesex, HA6 1DJ

ROBSONS

Ross Haven Place, Northwood, Middlesex, HA6 1DJ

**SEMI-DETACHED • THREE BEDROOMS •
FAMILY BATHROOM AND ENSUITE SHOWER
WITH BASIN • GATED MEWS •
SOUTH-FACING COURTYARD GARDEN •
CHAIN FREE • ALLOCATED PARKING •
DOUBLE GARAGE • HEART OF NORTHWOOD
• LIGHT AND SPACIOUS**

Description

Situated in a gated mews set moments from the heart of Northwood town centre is this semi-detached three bedroom house presented to the market with the benefit of no onward chain. The property consists of a kitchen, utility room, downstairs w/c /cloakroom, lounge and conservatory. To the first floor are three bedrooms and a family bathroom. The principal bedroom benefits from an ensuite shower with hand basin.

To the rear is a south-facing private courtyard garden and within the gated turning is allocated parking and a large double garage with electric shutters.

Additional benefits include a large boarded loft space and side-access to the rear garden.





Northwood provides a range of shopping facilities including Waitrose supermarket, a variety of restaurants and other amenities with the Metropolitan Line station providing access to Baker Street and the City. There is a plethora of state and private schooling together with a wide choice of recreational facilities, which include golf courses and fitness centres. The M1, M40 and M25 motorways are also accessible.

NB this property is situated within the proximity of the ULEZ, if your vehicle does not comply charges may apply.

Additional Information

Tenure: Freehold

Local Authority: London Borough of Hillingdon

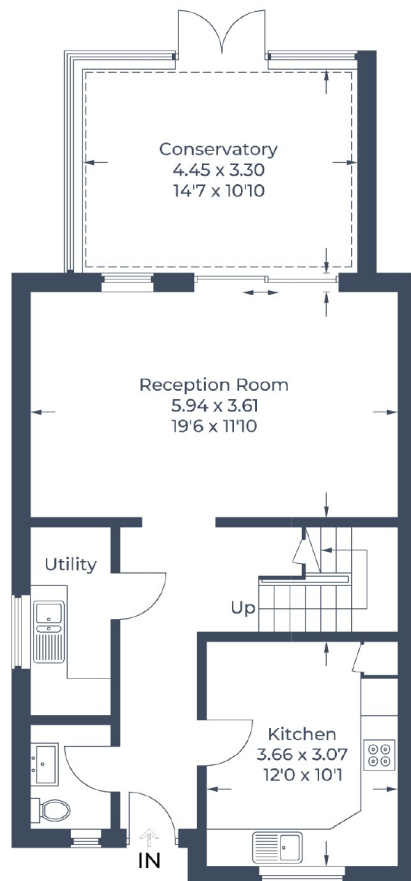
Council Tax Band: G

Energy Efficiency Rating: C

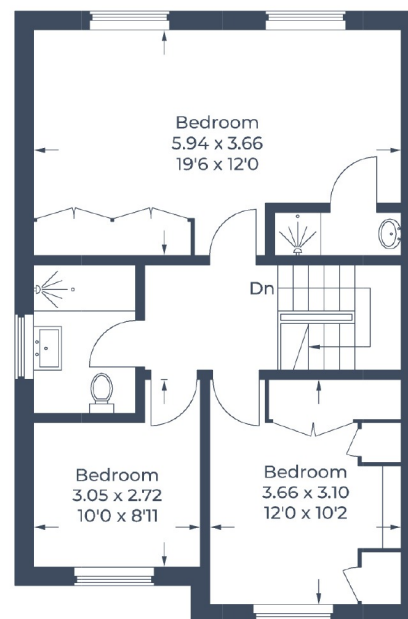
For additional information, please refer to www.robsonswb.com or call us on: 01923 835355.



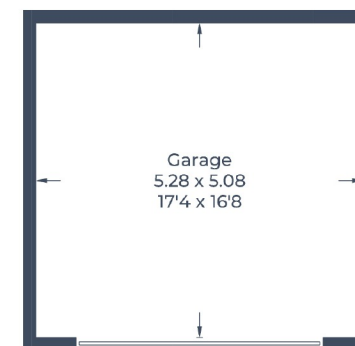
Approximate Gross Internal Area
 Ground Floor = 70.0 sq m / 753 sq ft
 First Floor = 53.6 sq m / 577 sq ft
 Garage = 27.0 sq m / 291 sq ft
 Total = 150.6 sq m / 1,621 sq ft



Ground Floor



First Floor



(Not Shown In Actual Location / Orientation)

Illustration for identification purposes only,
 measurements are approximate, not to scale.
 © CJ Property Marketing Produced for Robsons

ROBSONS

7 Clive Parade, Northwood, HA6 2QF
 Tel: 01923 835355 Email: northwood@robsonswb.com
www.robsonswb.com

Important notice: Robsons, their clients and any joint agents give notice that 1: They are not authorised to make or give any representations or warranties in relation to the property either here or elsewhere, either on their own behalf or on behalf of their client or otherwise. They assume no responsibility for any statement that may be made in these particulars. These particulars do not form part of any offer or contract and must not be relied upon as statements or representations of fact. 2: Any areas, measurements or distances are approximate. Plot sizes and dimensions are taken from Promap and are approximate. The text, photographs and plans are for guidance only and are not necessarily comprehensive. It should not be assumed that the property has all necessary planning, building regulation or other consents and Robsons have not tested any services, equipment or facilities. Purchasers must satisfy themselves by inspection or otherwise.