



**GROUND FLOOR TWO/THREE BEDROOM APARTMENT IN IMMACULATE
CONDITION**

Woodmans Court, Eastbury Road, Northwood, Middlesex, HA6 3AL

ROBSONS

Woodmans Court, Eastbury Road, Northwood,
Middlesex, HA6 3AL

**GROUND FLOOR APARTMENT • TWO/THREE
BEDROOMS • TWO BATHROOMS •
OFF-STREET PARKING • PRIVATE REAR
GARDEN • MODERN THROUGHOUT • MAIN
BEDROOM WITH EN-SUITE • FITTED
WARDROBES • FULLY FITTED KITCHEN**

Description

This rarely available ground floor apartment is offered to the market in modern condition throughout.

Positioned prominently upon the sought after road of Eastbury Road, within a moments walk to Northwood Station and shops, this apartment has the benefit of off street parking.

The apartment comprises a large entrance hallway leading through to a fantastic reception room, well-appointed kitchen and utility room. There are two double bedrooms with the principal bedroom benefitting from an en-suite. The utility room could also be used as a third bedroom.

The property also benefits from a private rear garden for the exclusive use of the apartment.





Northwood provides a range of shopping facilities including Waitrose supermarket, a variety of restaurants and other amenities with the Metropolitan Line station providing access to Baker Street and the City. There is a plethora of state and private schooling together with a wide choice of recreational facilities, which include golf courses and fitness centres. The M1, M40 and M25 motorways are also accessible.

NB this property is situated within the proximity of the ULEZ, if your vehicle does not comply charges may apply.

Additional Information

Tenure: Leasehold

Lease Length: 114 years remaining

Service Charge: approx. £2,000 p/a

Ground Rent: £500 p/a

Local Authority: London Borough of Hillingdon

Council Tax Band: F

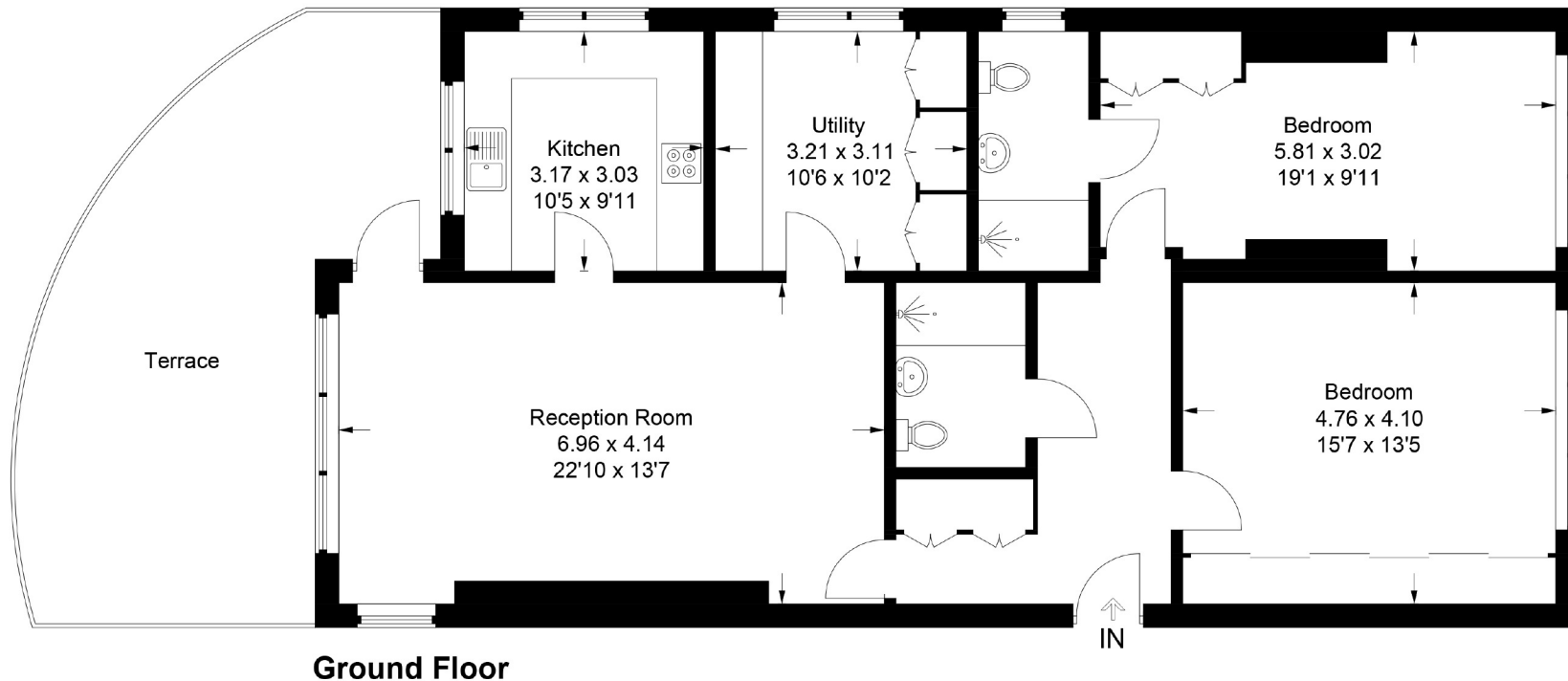
Energy Efficiency Rating: D

For additional information, please refer to www.robsonswb.com or call us on: 01923 835355.



2 Woodmans Court, 24 Eastbury Road Northwood

Approximate Gross Internal Area
108.3 sq m / 1,166 sq ft



Ground Floor

This plan is for layout guidance only. Not drawn to scale unless stated. Windows and door openings are approximate. Whilst every care is taken in the preparation of this plan, please check all dimensions, shapes and compass bearings before making any decisions reliant upon them.

© CJ Property Marketing Ltd Produced for Robertsons

ROBSONS

7 Clive Parade, Northwood, HA6 2QF
Tel: 01923 835355 Email: northwood@robsonsweb.com

www.robsonsweb.com

Important notice: Robsons, their clients and any joint agents give notice that 1: They are not authorised to make or give any representations or warranties in relation to the property either here or elsewhere, either on their own behalf or on behalf of their client or otherwise. They assume no responsibility for any statement that may be made in these particulars. These particulars do not form part of any offer or contract and must not be relied upon as statements or representations of fact. 2: Any areas, measurements or distances are approximate. Plot sizes and dimensions are taken from Promap and are approximate. The text, photographs and plans are for guidance only and are not necessarily comprehensive. It should not be assumed that the property has all necessary planning, building regulation or other consents and Robsons have not tested any services, equipment or facilities. Purchasers must satisfy themselves by inspection or otherwise.