



DETACHED FIVE BEDROOM FAMILY HOME WITHIN THE COPSEWOOD ESTATE

Copse Wood Way, Northwood, Middlesex, HA6 2UA

ROBSONS

Copse Wood Way, Northwood, Middlesex, HA6 2UA

DETACHED • FIVE BEDROOMS • FOUR BATHROOMS • OVER 3,675 SQ FT • CARRIAGE DRIVEWAY • DOUBLE GARAGE • COPSEWOOD ESTATE • LARGE REAR GARDEN

Description

Located within the much sought-after Copse Wood estate, this beautiful detached five-bedroom, four-bathroom family home offers over 3675 sqft of modern living space spread across three floors. It sits on an impressive plot of approximately .24 of an acre and features a sweeping carriage driveway. Inside, the property boasts three reception rooms, a kitchen/dining room, utility room, guest w/c, and a double garage. The first floor includes three double bedrooms and three bathrooms, while the second floor has two bedrooms, a bathroom, and a large open landing currently used as a games/lounge area.

Externally, the property provides ample off-street parking and access to the double garage. The spacious private garden at the rear has been thoughtfully landscaped and is highlighted by mature shrubs, a water feature, and both a large and small patio, perfect for outdoor entertaining.





Additionally, the rear of the garden has a prepared area with electrical and water supply ready to receive a garden room.

Location

The area offers a wide range of educational opportunities with a variety of state and private schools. Northwood provides an array of amenities including a Waitrose supermarket, dining options, and recreational facilities like golf courses and fitness centres. Additionally, the Metropolitan Line station offers convenient access to Baker Street and the City, while the property is easily accessible from the M1, M40, and M25 motorways.

Note that this property falls within the proximity of the ULEZ, and charges may apply if your vehicle does not comply.

Additional Information

Tenure: Freehold

Local Authority: London Borough of Hillingdon

Council Tax: G

Energy Efficiency Rating: C



Approximate Gross Internal Area
 Ground Floor = 147.1 sq m / 1,583 sq ft
 (Including Garage)
 First Floor = 113.6 sq m / 1,223 sq ft
 Second Floor = 80.7 sq m / 869 sq ft
 (Including Eaves)
 Total = 341.4 sq m / 3,675 sq ft

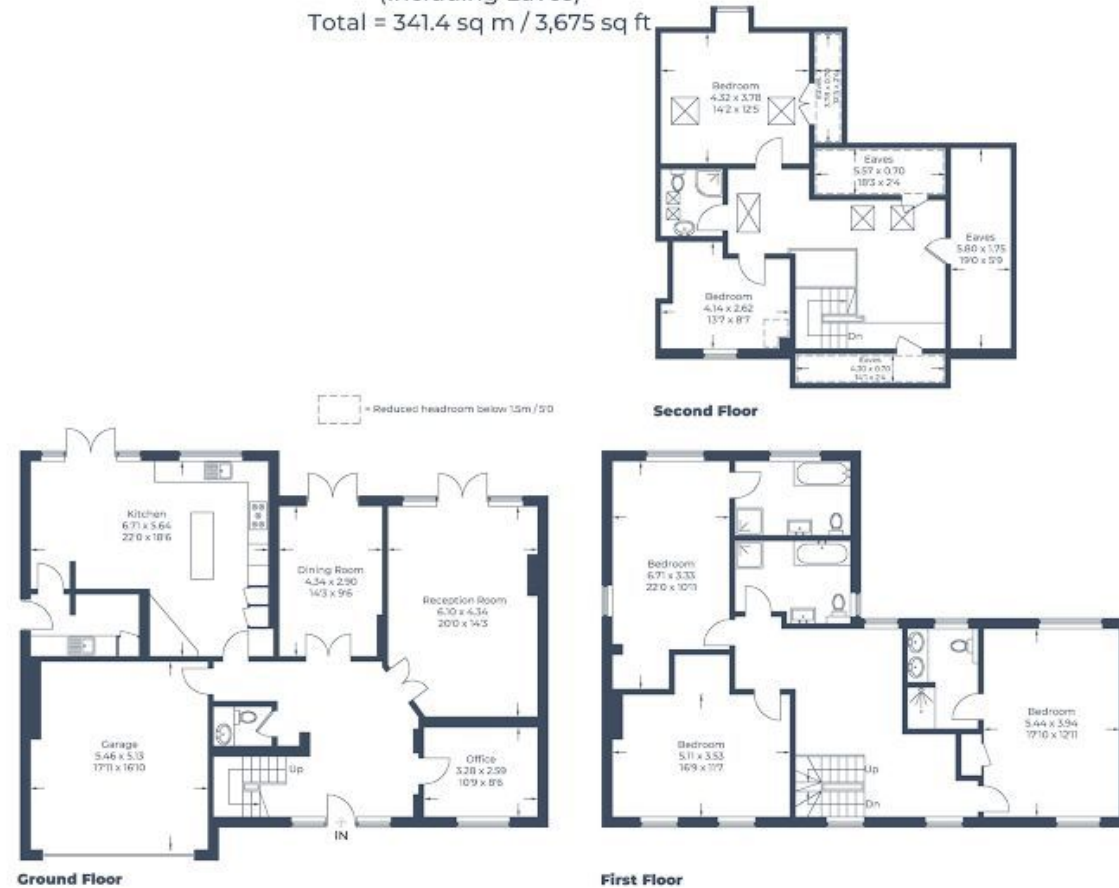


Illustration for identification purposes only,
 measurements are approximate, not to scale.
 © CJ Property Marketing Produced for Robsons



7 Clive Parade, Northwood, HA6 2QF
 Tel: 01923 835355 Email: northwood@robsonsweb.com
www.robsonsweb.com

Important notice: Robsons, their clients and any joint agents give notice that 1: They are not authorised to make or give any representations or warranties in relation to the property either here or elsewhere, either on their own behalf or on behalf of their client or otherwise. They assume no responsibility for any statement that may be made in these particulars. These particulars do not form part of any offer or contract and must not be relied upon as statements or representations of fact. 2: Any areas, measurements or distances are approximate. Plot sizes and dimensions are taken from Promap and are approximate. The text, photographs and plans are for guidance only and are not necessarily comprehensive. It should not be assumed that the property has all necessary planning, building regulation or other consents and Robsons have not tested any services, equipment or facilities. Purchasers must satisfy themselves by inspection or otherwise.