



**DETACHED FIVE BEDROOM FAMILY HOME ON A LARGE PLOT**

Moor Park Road, Northwood, Middlesex, HA6 2DJ

**ROBSONS**

Moor Park Road, Northwood, Middlesex, HA6 2DJ

**DETACHED • FIVE BEDROOMS • LARGE PLOT  
• REAR GARDEN WITH POOL • LARGE  
DRIVEWAY • GARAGE • CAR PORT • CHAIN  
FREE • POTENTIAL TO EXTEND STPP**

### Description

This five bedroom detached house sits proudly upon a prominent large plot on the highly sought after Moor Park Road. This property has the additional benefit of being sold with no onward chain.

To the ground floor, the property comprises a large entrance hallway leading to a versatile dining room, an impressive reception room with double doors leading to the beautiful rear garden and the well-appointed kitchen with the addition of a conservatory.

To the first floor, a separate principal bedroom with fitted wardrobes, an en-suite and stunning views over the rear garden. Four further double bedrooms, separate w/c and a family bathroom complete the first floor.





Further benefits include a fantastic frontage with a large driveway, suitable for several vehicles, a downstairs w/c and a garage. This property has significant potential to enhance and extend subject to the usual planning permissions and consents.

### Location

Northwood provides a range of shopping facilities including Waitrose supermarket, a variety of restaurants and other amenities with the Metropolitan Line station providing access to Baker Street and the City. There is a plethora of state and private schooling together with a wide choice of recreational facilities, which include golf courses and fitness centres. The M1, M40 and M25 motorways are also accessible.

NB this property is situated within the proximity of the ULEZ, if your vehicle does not comply charges may apply.

### Additional Information

Tenure: Freehold

Local Authority: London Borough of Hillingdon

Council Tax: G

Energy Efficiency Rating: D

For additional information, please refer to [www.robsonswb.com](http://www.robsonswb.com) or call us on: 01923 835355.



Approximate Gross Internal Area  
Ground Floor = 105.4 sq m / 1,134 sq ft  
First Floor = 92.0 sq m / 990 sq ft  
Garage = 12.7 sq m / 137 sq ft  
Total = 210.1 sq m / 2,261 sq ft

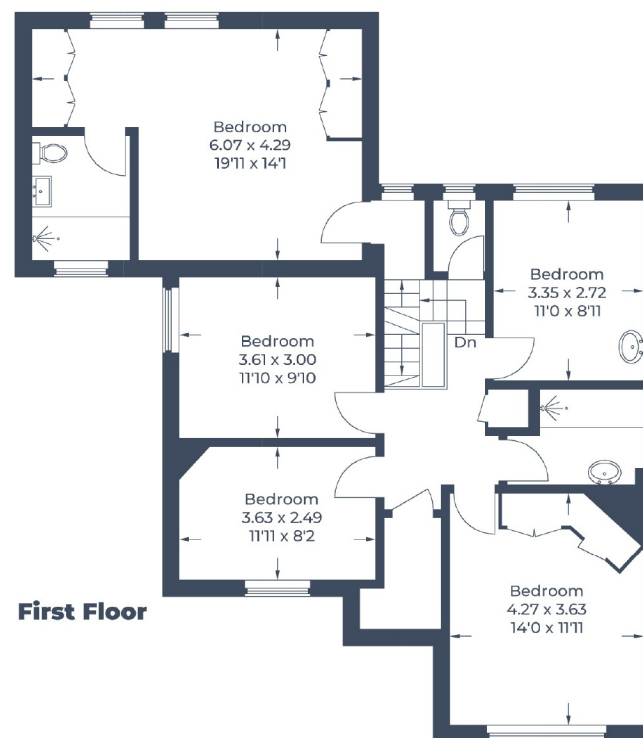


Illustration for identification purposes only,  
measurements are approximate, not to scale.  
© CJ Property Marketing Produced for Robsons



7 Clive Parade, Northwood, HA6 2QF  
Tel: 01923 835355 Email: northwood@robsonswb.com  
[www.robsonswb.com](http://www.robsonswb.com)