



**THREE BEDROOM LINK DETACHED FAMILY HOME**

Dene Road, Northwood, Middlesex, HA6 2DF



Dene Road, Northwood, Middlesex, HA6 2DF

**LINK DETACHED • THREE BEDROOMS • MAIN BEDROOM WITH EN-SUITE • PRIVATE REAR GARDEN • INTEGRAL GARAGE • DRIVEWAY PARKING • FITTED WARDROBES IN ALL BEDROOMS • SOLAR PANELS**

### Description

A well presented three bedroom link detached family home situated on Dene Road.

The property comprises an entrance hallway, guest w/c, kitchen to the front, reception room with sliding doors leading out to the rear garden and access to the integral garage. To the first floor are three bedrooms, each with fitted wardrobes and a family bathroom. The principal bedroom has the added benefit of an en-suite.

The front of the property provides driveway parking and access to the garage.





Northwood provides a range of shopping facilities including Waitrose supermarket, a variety of restaurants and other amenities with the Metropolitan Line station providing access to Baker Street and the City. There is a plethora of state and private schooling together with a wide choice of recreational facilities, which include golf courses and fitness centres. The M1, M40 and M25 motorways are also accessible.

NB this property is situated within the proximity of the ULEZ, if your vehicle does not comply charges may apply.

### **Additional Information**

Tenure: Freehold

Local Authority: London Borough of Hillingdon

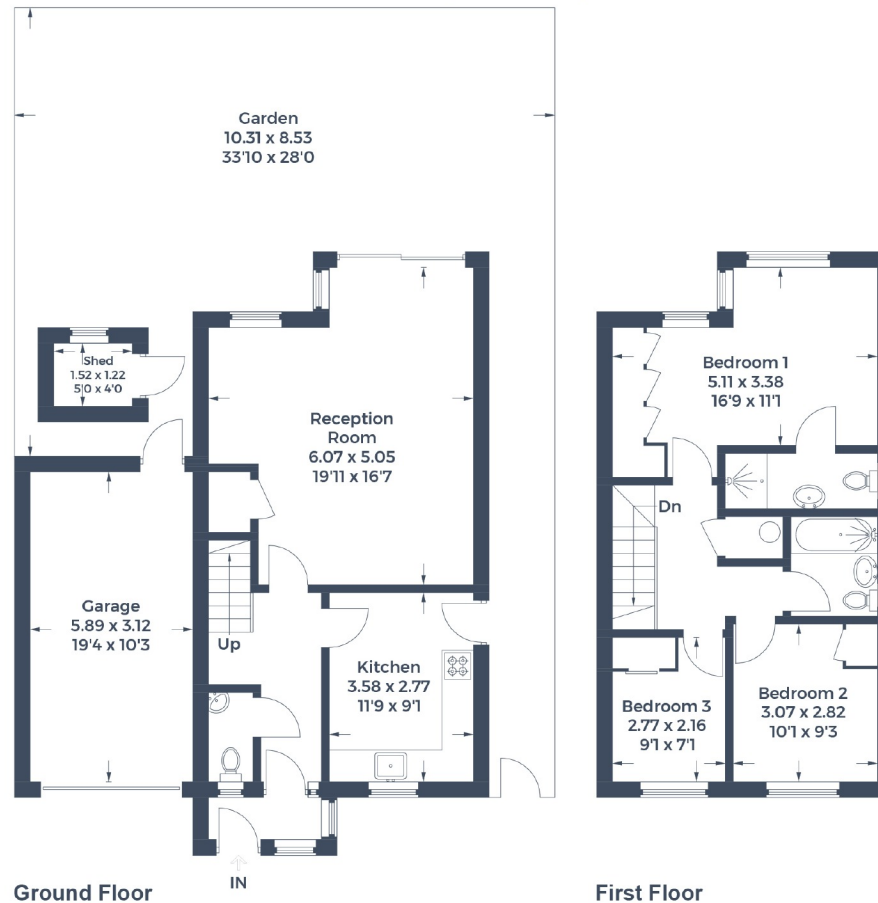
Council Tax: F

Energy Efficiency Rating: D

For additional information, please refer to [www.robsonswb.com](http://www.robsonswb.com) or call us on: 01923 835355.



Approximate Gross Internal Area  
 Ground Floor = 50.7 sq m / 546 sq ft  
 First Floor = 47.7 sq m / 513 sq ft  
 Garage = 18.6 sq m / 200 sq ft  
 Outbuilding = 1.9 sq m / 20 sq ft  
 Total = 118.9 sq m / 1,279 sq ft



This plan is for layout guidance only. Not drawn to scale unless stated. Windows and door openings are approximate. Whilst every care is taken in the preparation of this plan, please check all dimensions, shapes and compass bearings before making any decisions reliant upon them.

© CJ Property Marketing Produced for Robsons



7 Clive Parade, Northwood, HA6 2QF  
 Tel: 01923 835355 Email: northwood@robsonswb.com  
[www.robsonswb.com](http://www.robsonswb.com)