



WELL PRESENTED THREE BEDROOM SEMI-DETACHED FAMILY HOME

Sullivan Crescent, Harefield, Uxbridge, UB9 6NL



Sullivan Crescent, Harefield, Uxbridge, UB9 6NL

SEMI-DETACHED • THREE BEDROOMS • TWO BATHROOMS • OPEN-PLAN KITCHEN WITH BI-FOLDING DOORS • LARGE REAR GARDEN • DRIVEWAY PARKING • DOWNSTAIRS W/C • LIGHT ROOMS AND MODERN THROUGHOUT

Description

A beautifully presented and skilfully extended three bedroom, two bathroom semi-detached house in a quiet location close to local shops.

Benefitting from off-street parking to the front and large rear garden which includes an outside home office and playroom.

This property is ideal for a growing family looking for a ready-made home in a convenient location within the village.





The property is situated in Harefield which is surrounded by some beautiful countryside along the Grand Union Canal. The local area also has good sporting facilities which include golf, cricket and football clubs. Rickmansworth caters for specialist and daily shopping requirements to include the food halls of Marks & Spencer, Waitrose and Tesco. More extensive shopping facilities are available in the larger towns of Watford and Uxbridge. At Denham is the Chiltern Line to Marylebone whilst at Rickmansworth there is the Chiltern Line and Metropolitan railways to London Marylebone and Baker Street. The M25 motorway is available at junction 17 connecting you to the national motorway network. The area is well served for good quality private and state schools for all ages.

NB this property is situated within the proximity of the ULEZ, if your vehicle does not comply charges may apply.

Additional Information

Tenure: Freehold

Local Authority: London Borough of Hillingdon

Council Tax: F

Energy Efficiency Rating: C

For additional information, please refer to www.robsonswb.com or call us on: 01923 835355.



Approximate Gross Internal Area
 Ground Floor = 77.4 sq m / 833 sq ft
 First Floor = 42.2 sq m / 454 sq ft
 Second Floor = 40.5 sq m / 436 sq ft
 Shed = 27.9 sq m / 300 sq ft
 Total = 188.0 sq m / 2,023 sq ft

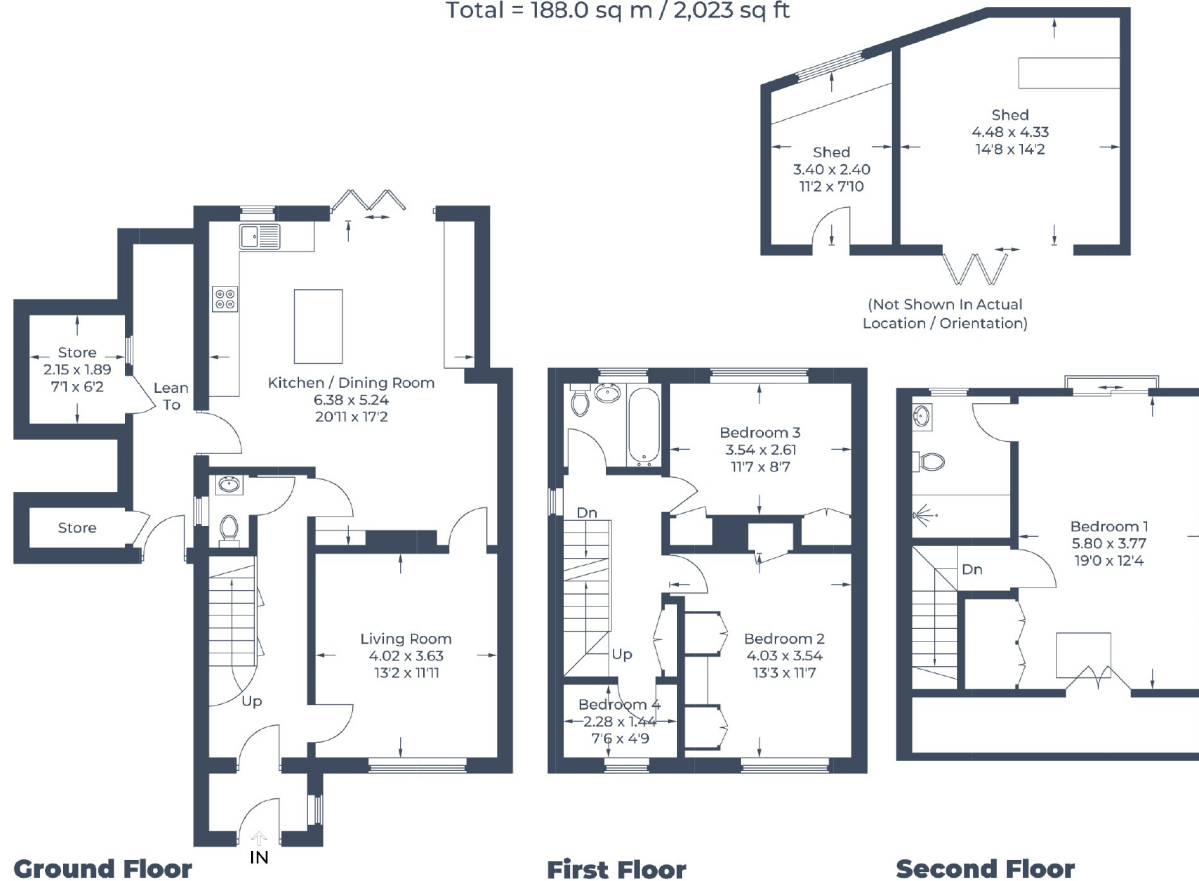


Illustration for identification purposes only,
 measurements are approximate, not to scale.
 © CJ Property Marketing Produced for Robsons



7 Clive Parade, Northwood, HA6 2QF
 Tel: 01923 835355 Email: northwood@robsonswb.com
www.robsonswb.com