



A SIX BEDROOM, FOUR BATHROOM DETACHED FAMILY HOME

Kewferry Drive, Northwood, Middlesex HA6 2NT





A SIX BEDROOM, FOUR BATHROOM DETACHED FAMILY HOME

Kewferry Drive, Northwood, Middlesex, HA6 2NT

ENTRANCE HALLWAY • THREE RECEPTION ROOMS • KITCHEN/LIVING ROOM • GROUND FLOOR UTILITY ROOM • GROUND FLOOR WC • SIX BEDROOMS • TWO ENSUITE BATHROOMS • TWO FURTHER BATHROOMS • DRIVEWAY • REAR GARDEN • OUTBUILDING • SHED •

Description

Situated on arguably one of Northwood's most sought after private and gated roads set within close proximity of the town centre. This attractive detached family home presents just short of 3000 sqft of well balanced and spacious accommodation set over three floors. The property is set back from the road accessed via the carriage driveway that provides off street parking for several vehicles.

To the rear is a mature, large and private southerly oriented garden benefiting from a large private patio ideal for alfresco dining and an outbuilding which is a 12x20 Classic Summer House with a 2' Verandah on a concrete base with the main room being 14'x12' with double doors to the smaller room being 6'x12' with double doors onto the Verandah. It has several windows, sockets and lighting in both rooms.

Location

Northwood provides a range of shopping facilities including Waitrose supermarket, a variety of restaurants and other amenities with the Metropolitan Line station providing access to Baker Street and the City. There is a plethora of state and private schooling together with a wide choice of recreational facilities, which include golf courses and fitness centres. The M1, M40 and M25 motorways are also accessible.

Tenure: Freehold

Energy Efficiency Rating: C

Local Authority: London Borough of Hillingdon

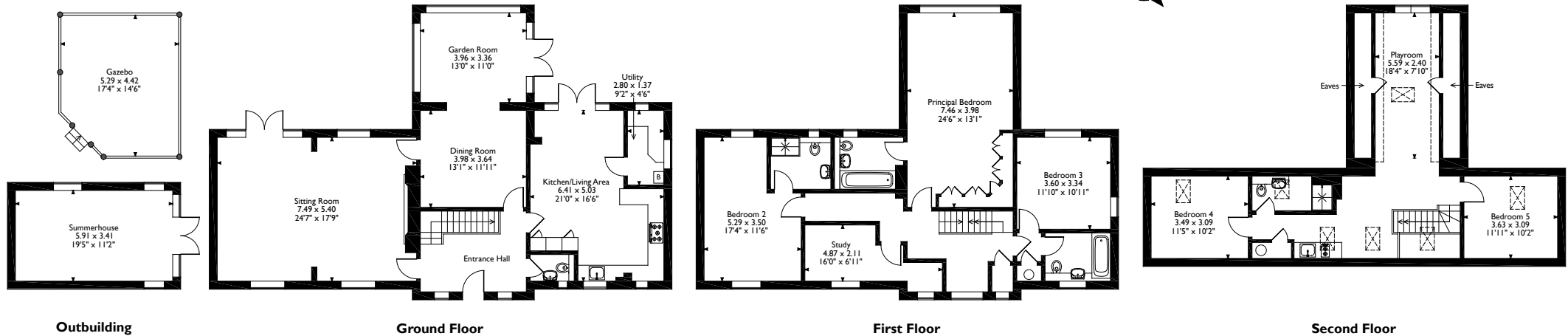








Kewferry Drive, Northwood, Hertfordshire
 Approximate Gross Internal Area
 Main House = 277 Sq M/2983 Sq Ft
 Outbuilding = 20 Sq M/217 Sq Ft
 Total = 297 Sq M/3200 Sq Ft



Please note that the location of doors, windows and other items are approximate and this floorplan is to be used for illustrative purposes only. Unauthorized reproduction is prohibited.



7 Clive Parade, Northwood, Middlesex HA6 2QF
 Tel: 01923 835 355 northwood@robsonswb.com
www.robsonswb.com



