



SEMI-DETACHED THREE BEDROOM FAMILY HOME

Pinner Road, Northwood Hills, Middlesex, HA6 1QN

ROBSONS

SEMI-DETACHED THREE BEDROOM FAMILY HOME

Pinner Road, Northwood Hills, Middlesex, HA6 1QN

SEMI-DETACHED • THREE BEDROOMS • WELL PRESENTED REAR GARDEN • DRIVEWAY PARKING

Description

This three bedroom semi-detached house is offered to the market in good condition throughout, providing spacious and flexible accommodation.

To the ground floor, a large entrance hallway leading to the front reception room, dining room and a well-equipped kitchen. There is also a conservatory which leads out to the laid to lawn rear garden. The garage has been skilfully modified to create a utility/storage area which also has the benefit of further potential to extend.

To the first floor are two double bedrooms, a further bedroom and a family bathroom.





The property is conveniently located in Northwood Hills and is perfectly positioned for highly regarded local schools including Northwood School (now an academy) and Harlyn and Hillside Primary Schools. Northwood Hills has an array of shopping facilities, restaurants and transport facilities including the Metropolitan Line station with access to Baker Street and The City. The local area is also well served with leisure facilities including golf, tennis and football clubs. The M1, M40 and M25 motorways are also easily accessible.

NB this property is situated within the proximity of the ULEZ, if your vehicle does not comply charges may apply.

Additional Information

Tenure: Freehold

Local Authority: London Borough of Hillingdon

Council Tax: E

Energy Efficiency Rating: D



Approximate Gross Internal Area
Ground Floor = 74.1 sq m / 798 sq ft
First Floor = 44.5 sq m / 479 sq ft
Total = 118.6 sq m / 1,277 sq ft

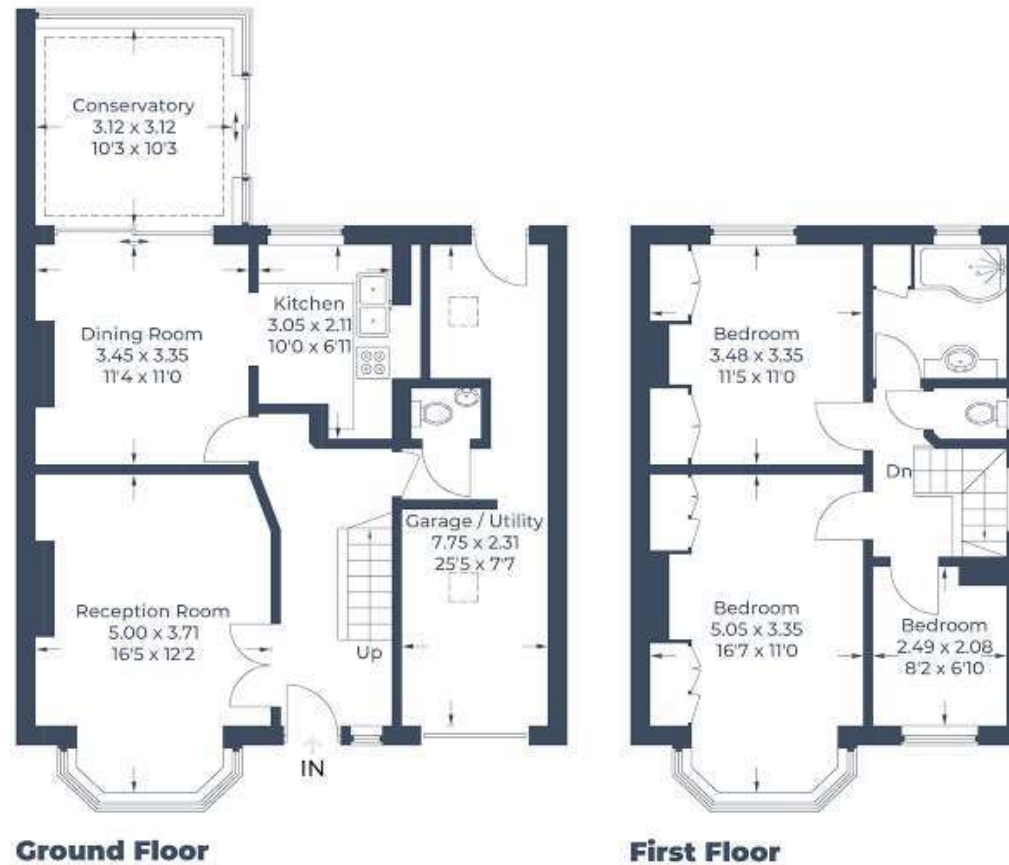


Illustration for identification purposes only,
measurements are approximate, not to scale.
© CJ Property Marketing Produced for Robsons

ROBSONS

7 Clive Parade, Northwood, HA6 2QF
Tel: 01923 835355 Email: northwood@robsonsweb.com
www.robsonsweb.com