



END OF TERRACE FOUR BEDROOM HOME IN A QUIET CUL-DE-SAC

Ashbourne Square, Northwood, Middlesex, HA6 3BQ



END OF TERRACE FOUR BEDROOM HOME IN A QUIET CUL-DE-SAC

Ashbourne Square, Northwood, Middlesex, HA6 3BQ

END OF TERRACE • FOUR BEDROOMS • TWO RECEPTION ROOMS • TWO BATHROOMS • SOUTH-FACING BALCONY • PRIVATE REAR GARDEN • DRIVEWAY PARKING • GARAGE • OVER 2000 SQFT •

Description

An immaculate and modern end of terrace town house positioned in a quiet cul-de-sac on arguably the most spacious plot within the turning.

The property is presented to a modern finish throughout to offer spacious and comfortable living space of over 2000 sqft set over three levels. Comprising four bedrooms, two bathrooms, two reception rooms, kitchen/dining room, separate utility room and guest w/c.

The property also benefits from a south-facing balcony at first floor level, private rear garden, off street parking and garaging.





Location

Northwood provides a range of shopping facilities including Waitrose supermarket, a variety of restaurants and other amenities with the Metropolitan Line station providing access to Baker Street and the City. There is a plethora of state and private schooling together with a wide choice of recreational facilities, which include golf courses and fitness centres. The M1, M40 and M25 motorways are also accessible.

NB this property is situated within the proximity of the ULEZ, if your vehicle does not comply charges may apply.

Additional Information

Tenure: Freehold

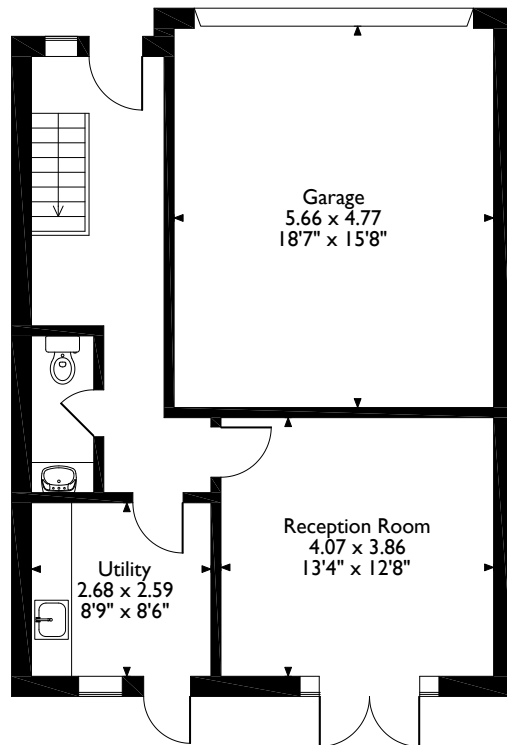
Local Authority: London Borough of Hillingdon

Council Tax: Band G

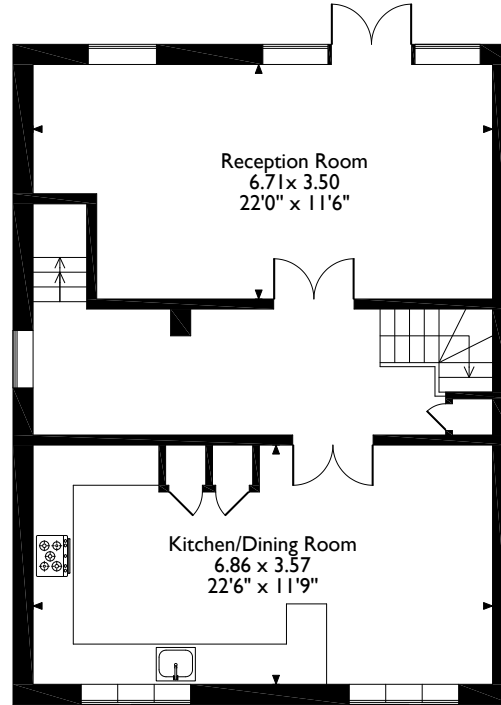
Energy Efficiency Rating: Band C



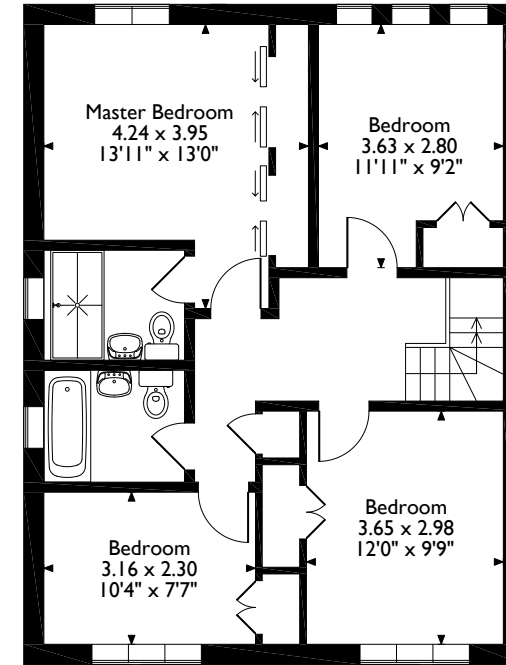
Ashbourne Square, Northwood
 Approximate Gross Internal Area
 Main House = 163 Sq M/ 1754 Sq Ft
 Garage = 27 Sq M/ 291 Sq Ft
 Total = 190 Sq M/ 2045 Sq Ft



Ground Floor



First Floor



Second Floor

Please note that the location of doors, windows and other items are approximate and this floorplan is to be used for illustrative purposes only. Unauthorized reproduction is prohibited.



Address 7 Clive Parade, Northwood, Middlesex, HA6 2QF

Tel: 01923 835355 northwood@robsonswb.com

www.robsonswb.com