



## THREE BEDROOM SPLIT LEVEL MAISONETTE IN THE HEART OF NORTHWOOD

Leaf Close, Northwood, Middlesex, HA6 2YY

**ROBSONS**

Leaf Close, Northwood, Middlesex, HA6 2YY

**THREE BEDROOMS • SPLIT LEVEL MAISONETTE  
• PRIVATE REAR GARDEN • QUIET  
CUL-DE-SAC • NO ONWARD CHAIN •  
SPACIOUS LIVING • SHORT WALK TO  
NORTHWOOD TOWN AND STATION •  
DOUBLE GLAZED THROUGHOUT**

### Description

This fantastic three bedroom split-level maisonette is offered to the market with the benefit of no onward chain. Positioned within a moments' walk from Northwood Station and shops, this property is set within a quiet cul-de-sac.

The property provides spacious and flexible living accommodation throughout. Internal viewing is highly advised.





Northwood provides a range of shopping facilities including Waitrose supermarket, a variety of restaurants and other amenities with the Metropolitan Line station providing access to Baker Street and the City. There is a plethora of state and private schooling together with a wide choice of recreational facilities, which include golf courses and fitness centres. The M1, M40 and M25 motorways are also accessible.

NB this property is situated within the proximity of the ULEZ, if your vehicle does not comply charges may apply.

### **Additional Information**

Tenure: Leasehold

Lease Length: 125 years from 16th August 1982

Service Charge: Service Charge: £882.60 p.a.

Ground Rent: £10 p.a.

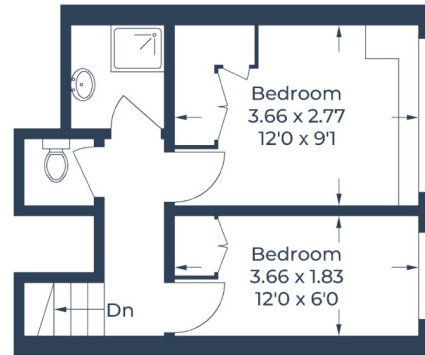
Local Authority: London Borough of Hillingdon

Council Tax: D

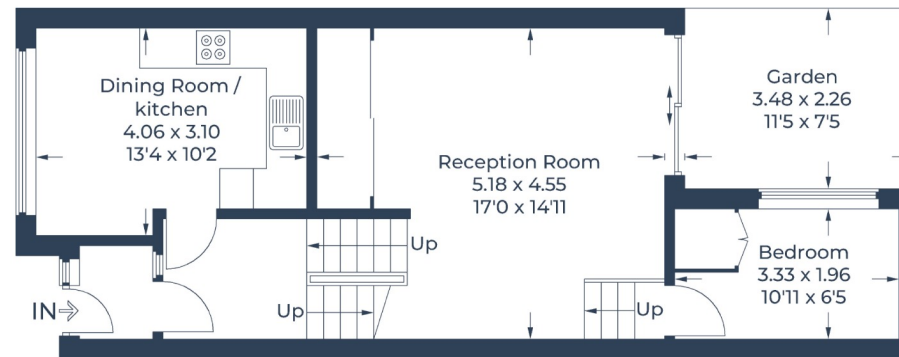
Energy Efficiency Rating: C



Approximate Gross Internal Area  
Ground Floor = 49.9 sq m / 537 sq ft  
First Floor = 24.9 sq m / 268 sq ft  
Total = 74.8 sq m / 805 sq ft



**First Floor**



**Ground Floor**

Illustration for identification purposes only,  
measurements are approximate, not to scale.  
© CJ Property Marketing Produced for Robsons

**ROBSONS**

7 Clive Parade, Northwood, HA6 2QF  
Tel: 01923 835355 Email: northwood@robsonsweb.com  
[www.robsonsweb.com](http://www.robsonsweb.com)

[www.the-londonoffice.co.uk](http://www.the-londonoffice.co.uk)  
40 ST JAMES'S PLACE SW1