



TWO BEDROOM FIRST FLOOR APARTMENT IN A QUIET CUL-DE-SAC

Hawkesworth Close, Northwood, Middlesex, HA6 2FT



FIRST FLOOR TWO BEDROOM APARTMENT

Hawkesworth Close, Northwood, Middlesex, HA6 2FT

TWO BEDROOMS • FIRST FLOOR • RESIDENTS PARKING • GARAGE • ENTRY PHONE SYSTEM • COMMUNAL GARDENS • CUL-DE-SAC LOCATION • SHORT WALK INTO TOWN •

Description

Robsons are pleased to present this fantastic two bedroom apartment to the market.

The apartment comprises a fully fitted kitchen, large lounge with beautiful views over the well-kept communal gardens, two double bedrooms and a family bathroom.

This property also benefits from residents parking, garage and entry phone system.

Positioned in the quiet cul-de-sac location of Hawkesworth Close, this apartment is a moments walk from the Northwood amenities.





Location

Northwood provides a range of shopping facilities including Waitrose supermarket, a variety of restaurants and other amenities with the Metropolitan Line station providing access to Baker Street and the City. There is a plethora of state and private schooling together with a wide choice of recreational facilities, which include golf courses and fitness centres. The M1, M40 and M25 motorways are also accessible.

NB this property is situated within the proximity of the ULEZ, if your vehicle does not comply charges may apply.

Additional Information

Tenure: Leasehold

Lease Length: 999 years from September 1981

Service Charge: £1,536 p/a

Ground Rent: Peppercorn (if demanded)

Local Authority: London Borough of Hillingdon

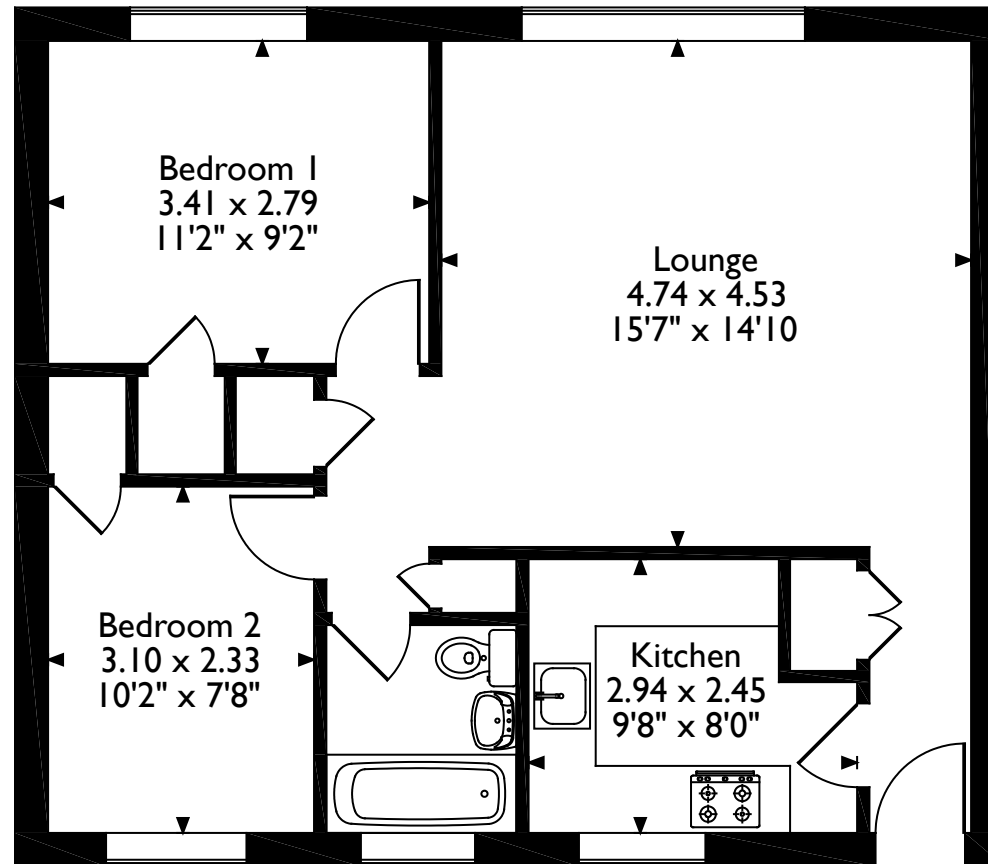
Council Tax: Band D

Energy Efficiency Rating: Band C



Hawkesworth Close, Northwood

Approximate Gross Internal Area 59 Sq M/635 Sq Ft



First Floor

Please note that the location of doors, windows and other items are approximate and this floorplan is to be used for illustrative purposes only. Unauthorized reproduction is prohibited.

ROBSONS

Address 7 Clive Parade, Northwood, Middlesex, HA6 2QF

Tel: 01923 835355 northwood@robsonswb.com

www.robsonswb.com