



THREE BEDROOM END OF TERRACE FAMILY HOME

Knoll Crescent, Northwood, Middlesex, HA6 1HH



Knoll Crescent, Northwood, Middlesex, HA6 1HH

**END OF TERRACE • THREE BEDROOMS •
QUIET CUL-DE-SAC • NO ONWARD CHAIN •
REAR GARDEN • GARAGE • DRIVEWAY
PARKING • LARGE RECEPTION ROOM •
BATHROOM TO GROUND FLOOR AND FIRST
FLOOR**

Description

This fantastic three-bedroom end of terrace house is offered to the market with the benefit of no onward chain. Positioned within a quiet cul-de-sac in the centre of Northwood.

The property comprises a well appointed kitchen (sold as seen, including the cooker, fridge and washing machine), a large reception room with direct access to the rear garden, downstairs bathroom and a garage.

To the first floor, three double bedrooms and a family bathroom.





Northwood provides a range of shopping facilities including Waitrose supermarket, a variety of restaurants and other amenities with the Metropolitan Line station providing access to Baker Street and the City. There is a plethora of state and private schooling together with a wide choice of recreational facilities, which include golf courses and fitness centres. The M1, M40 and M25 motorways are also accessible.

NB this property is situated within the proximity of the ULEZ, if your vehicle does not comply charges may apply.

Additional Information

Tenure: Freehold

Local Authority: London Borough of Hillingdon

Council Tax: E

Energy Efficiency Rating: D



Approximate Gross Internal Area
Ground Floor = 46.1 sq m / 496 sq ft
First Floor = 47.1 sq m / 507 sq ft
Garage = 4.7 sq m / 50 sq ft
Total = 97.9 sq m / 1,053 sq ft

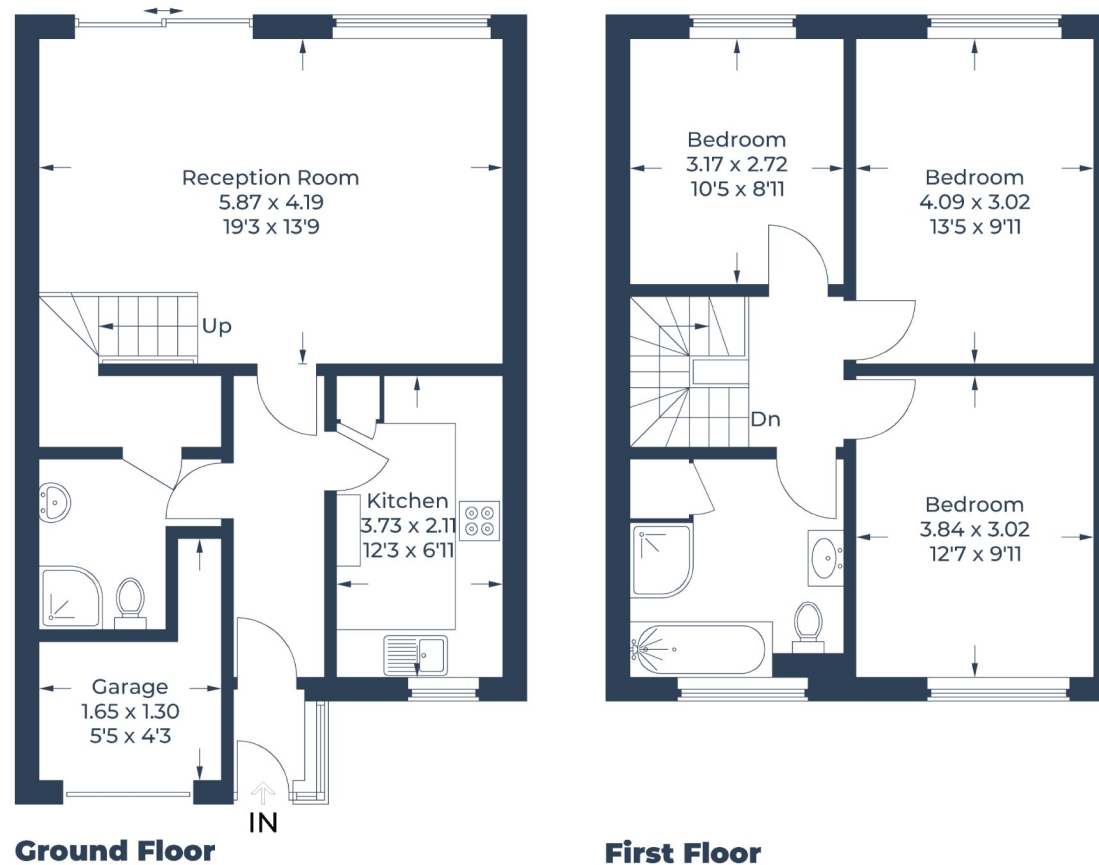


Illustration for identification purposes only,
measurements are approximate, not to scale.
© CJ Property Marketing Produced for Robsons

ROBSONS

7 Clive Parade, Northwood, HA6 2QF
Tel: 01923 835355 Email: northwood@robsonswb.com
www.robsonswb.com

www.the-londonoffice.co.uk
40 ST JAMES'S PLACE SW1