



IMMACULATE TWO/THREE BEDROOM APARTMENT

Frithwood Avenue, Northwood, Middlesex, HA6 3LX



TWO/ THREE BEDROOM APARTMENT

Frithwood Avenue, Northwood, Middlesex, HA6 3LX

PRIVATE ENTRANCE • REFURBISHED THROUGHOUT • SPACIOUS OPEN-PLAN LIVING • SOUTH-FACING TERRACE •

Access to the apartment is either from a wide communal staircase at second floor level or externally from the ground floor, where there is a private entrance door and staircase leading into the apartment.

The property has been refurbished and is presented in immaculate and stylish decorative order with plantation shutters.

The main living space is open plan with windows to both front and rear aspect and the kitchen area fitted with an island unit and integrated Siemens appliances. There are two bedrooms on this floor, the main bedroom with a dressing area and an en suite with both bath and shower cubicle. The second bedroom also has the benefit of a shower room.

A staircase from the sitting room leads to a third bedroom or second sitting room, which has double doors leading out to a substantial south-facing terrace.





Location

Northwood provides a range of shopping facilities including Waitrose supermarket, a variety of restaurants and other amenities with the Metropolitan Line station providing access to Baker Street and the City. There is a plethora of state and private schooling together with a wide choice of recreational facilities, which include golf courses and fitness centres. The M1, M40 and M25 motorways are also accessible.

NB this property is situated within the proximity of the ULEZ, if your vehicle does not comply charges may apply.

Additional Information

Tenure: Share of Freehold

Lease Length: 99 years from 24th June 1980

Service Charge/Ground Rent: £175 per month

Local Authority: London Borough of Hillingdon

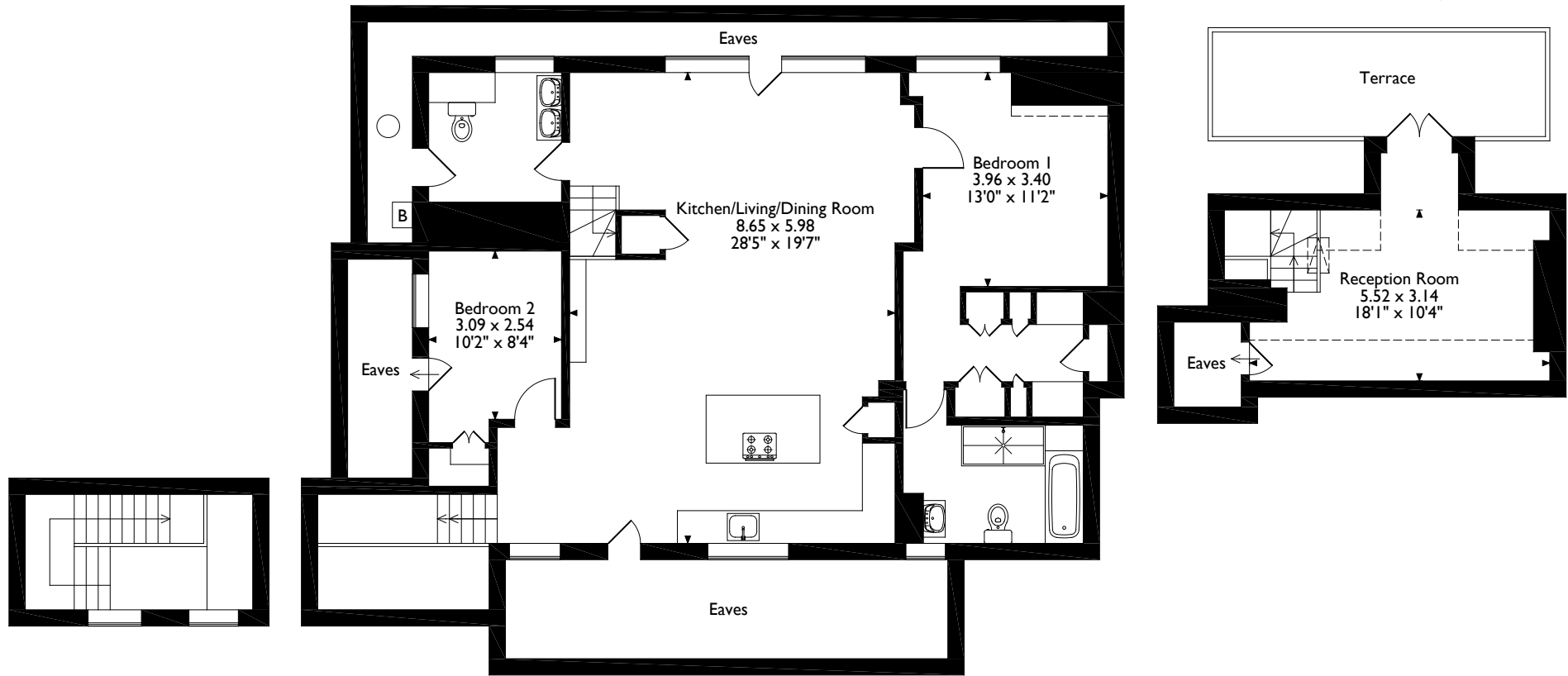
Council Tax: Band D

Energy Efficiency Rating: Band D



Frithwood Avenue, Northwood

Approximate Gross Internal Area 141 Sq M/1518 Sq Ft



First Floor

Second Floor

Third Floor

Please note that the location of doors, windows and other items are approximate and this floorplan is to be used for illustrative purposes only. Unauthorized reproduction is prohibited.



Address 7 Clive Parade, Northwood, Middlesex, HA6 2QF

Tel: 01923 835355 northwood@robsonswb.com

www.robsonswb.com