



## WELL PRESENTED TWO BEDROOM DETACHED BUNGALOW

Hillside Road, Northwood, Middlesex, HA6 1PY

**ROBSONS**



# DETACHED TWO BEDROOM BUNGALOW

Hillside Road, Northwood, Middlesex, HA6 1PY

**DETACHED • TWO BEDROOMS • SPACIOUS LIVING/DINING AREA • KITCHEN • CONSERVATORY • FAMILY BATHROOM • DETACHED GARAGE • DRIVEWAY PARKING •**

## Description

This fantastic detached bungalow is offered to the market in good condition throughout.

Positioned upon a commanding position on the popular Hillside Road. This property is accessed via a driveway suitable for several vehicles.

The property comprises versatile living accommodation. A large lounge/diner leads to the well-appointed kitchen and conservatory with beautiful uninterrupted views of the garden. Two double bedrooms and a family bathroom complete the accommodation. The property benefits from a detached garage and storage.







### **Location**

Northwood provides a range of shopping facilities including Waitrose supermarket, a variety of restaurants and other amenities with the Metropolitan Line station providing access to Baker Street and the City. There is a plethora of state and private schooling together with a wide choice of recreational facilities, which include golf courses and fitness centres. The M1, M40 and M25 motorways are also accessible.

NB this property is situated within the proximity of the ULEZ, if your vehicle does not comply charges may apply.

### **Additional Information**

Tenure: Freehold

Local Authority: London Borough of Hillingdon

Council Tax: Band F

Energy Efficiency Rating: Band D





Approximate Gross Internal Area = 90.4 sq m / 973 sq ft  
Outbuildings = 17.5 sq m / 188 sq ft  
Total = 107.9 sq m / 1,161 sq ft

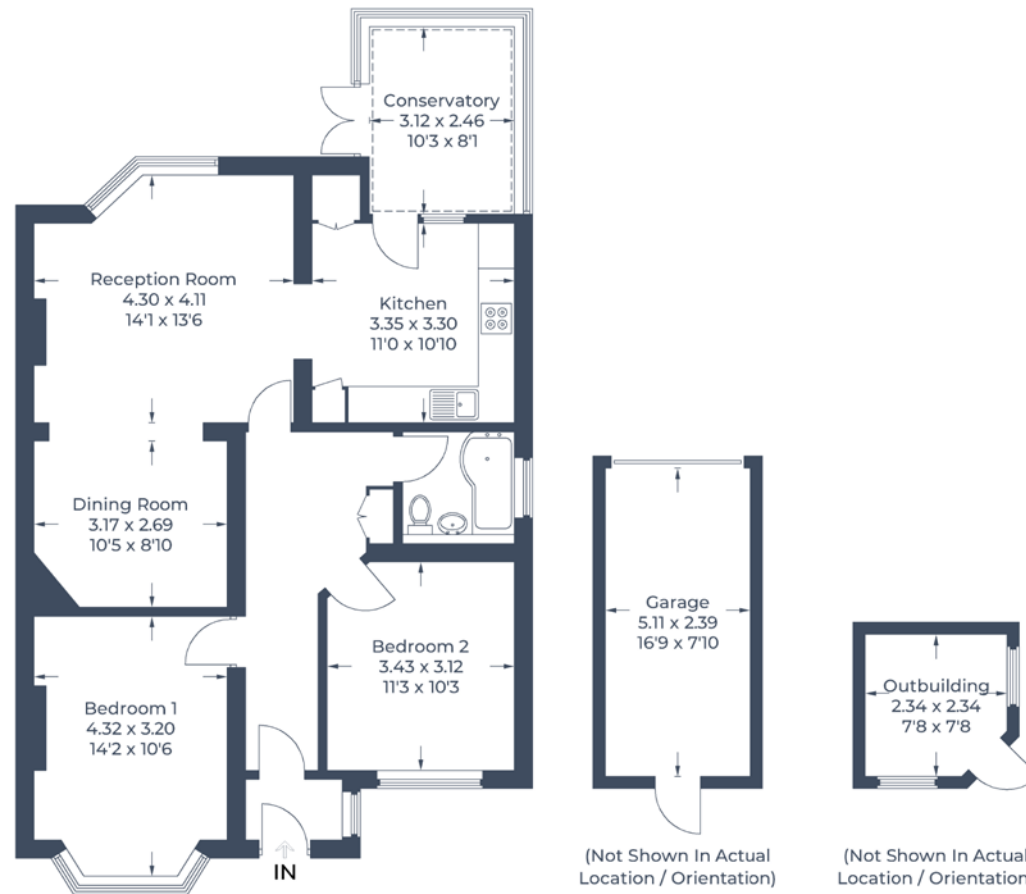


Illustration for identification purposes only,  
measurements are approximate, not to scale.  
© CJ Property Marketing Produced for Robsons



Address 7 Clive Parade, Northwood, Middlesex, HA6 2QF

Tel: 01923 835355 northwood@robsonswb.com

[www.robsonswb.com](http://www.robsonswb.com)