



A FIVE BEDROOM DETACHED FAMILY HOME

Firs Walk, Northwood, Middlesex, HA6 2BZ

ROBSONS

A FIVE BEDROOM DETACHED FAMILY HOME

Firs Walk, Northwood, Middlesex, HA6 2BZ

HALLWAY • THREE RECEPTION ROOMS • GYM • KITCHEN • FIVE BEDROOMS • TWO BATHROOMS • PRINCIPAL BEDROOM BALCONY • DRIVEWAY • SW FACING GARDEN

Description

An impressive detached family home which has recently been extended and refurbished to provide nearly 3000 sqft of accommodation with five bedrooms and two bathrooms set over three levels. Positioned in a quiet cul de sac accessed via one of Northwood's most popular private roads. The house is set on a commanding plot approaching 1/3 of an acre and offers flexible, modern accommodation with a large south west facing garden.

On the ground floor is a large reception room with bifold doors leading on to the garden, a music room and a gym, in addition to a large kitchen/family room with bifold doors to the patio. The first floor comprises a principal bedroom with ensuite and a private and secluded roof terrace, three bedrooms and a family bathroom. The second floor has a large bedroom or could be used as a playroom/games/teenage room.





Descripton

To the front of the property there is offstreet parking and a car port and to the rear is a terrace and a large south west facing garden which is ideal for entertaining and offers a separate area for children. This unique family home is finished to a modern standard throughout and must be viewed to appreciate the space and location.

Location

Northwood provides a range of shopping facilities including Waitrose supermarket, a variety of restaurants and other amenities with the Metropolitan Line station providing access to Baker Street and the City. There is a plethora of state and private schooling together with a wide choice of recreational facilities, which include golf courses and fitness centres. The M1, M40 and M25 motorways are also accessible.

Additional Information

Tenure: Freehold

Local Authority: London Borough of Hillingdon

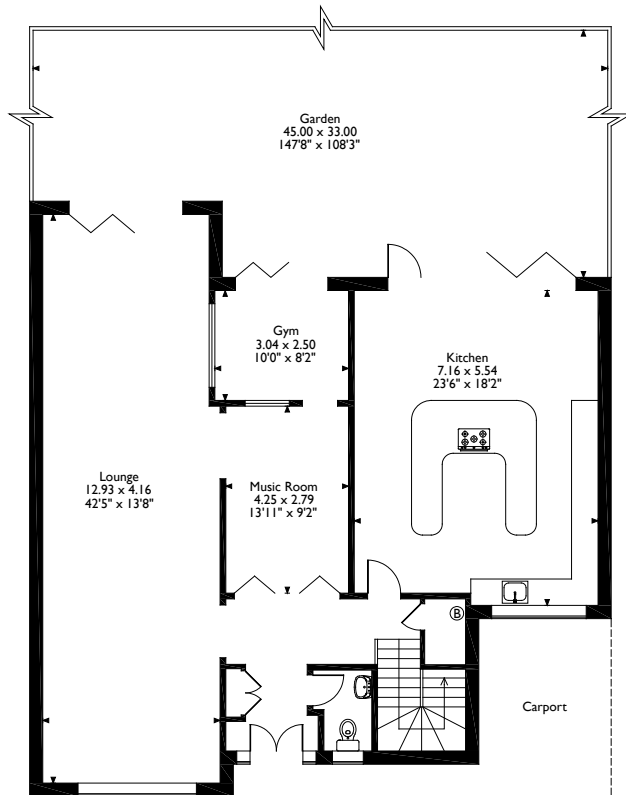
Energy Efficiency Rating: E

Council Tax : Band G

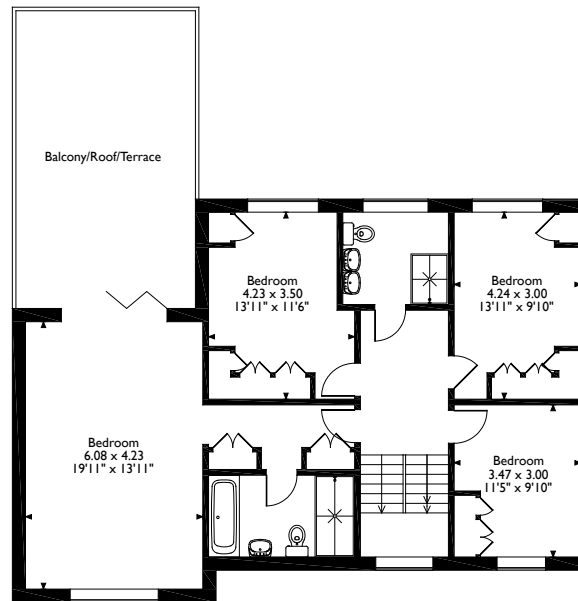


Firs Walk, Northwood

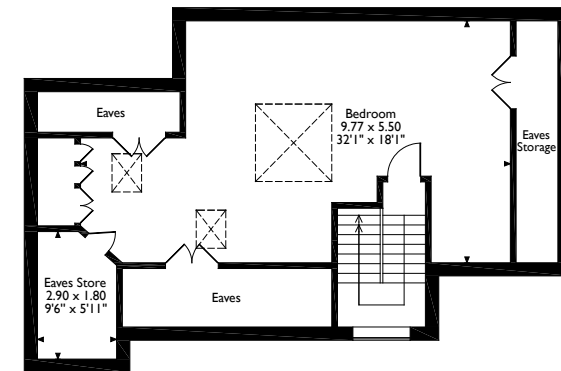
Approximate Gross Internal Area 276 Sq M/2960 Sq Ft



Ground Floor



First Floor



Second Floor

Please note that the location of doors, windows and other items are approximate and this floorplan is to be used for illustrative purposes only. Unauthorized reproduction is prohibited.



53 Green Lane, Northwood, Middlesex, HA6 3AE
Tel: 01923 835 355 northwood@robsonswb.com
www.robsonswb.com

