



## TOP FLOOR THREE BEDROOM PENTHOUSE APARTMENT

Liberty House, Eastbury Avenue, Northwood, Middlesex, HA6 3LN



**TOP FLOOR • THREE BEDROOMS • TWO BATHROOMS • BALCONY • UNDERGROUND GATED PARKING • LIFT ACCESS •**

Liberty House comprises nine luxury apartments, offering a beautiful blend of modern design, high specification and exquisite finish.

Framed by grand cedar trees, it is positioned on Eastbury Avenue, one of the area's finest streets, offering the pinnacle in modern, urban village living. Bordering beautiful parks and open spaces and minutes away from Central London via the London Underground.

Apartment nine is the penthouse apartment situated on the top floor with its own lift access directly into the property. It also benefits from a large southerly aspect balcony. It has a beautiful contemporary kitchen with integrated appliances and a separate utility room, a large reception room, three bedrooms and two bespoke-designed bathrooms. The apartment benefits from two underground gated parking spaces, a store room and lift access to all floors.

Northwood is in an exciting blend of restaurants, cafés and independent boutique shops, with a strong sense of community.

Liberty House is set to become the ultimate residential indulgence.





### **Location**

Northwood provides a range of shopping facilities including Waitrose supermarket, a variety of restaurants and other amenities with the Metropolitan Line station providing access to Baker Street and the City. There is a plethora of state and private schooling together with a wide choice of recreational facilities, which include golf courses and fitness centres. The M1, M40 and M25 motorways are also accessible.

NB this property is situated within the proximity of the ULEZ, if your vehicle does not comply charges may apply.

### **Additional Information**

Tenure: Leasehold

Lease Length: 250 years remaining

Service Charge: £4,675 per annum

Ground Rent: Peppercorn

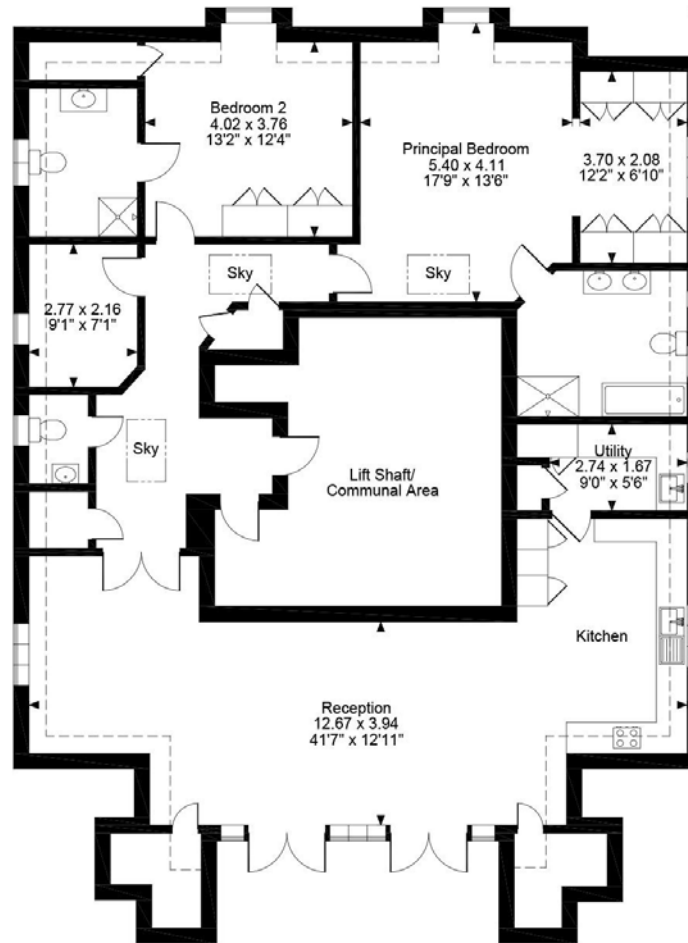
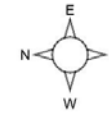
Local Authority: Three Rivers District Council

Council Tax: Band G

Energy Efficiency Rating: Band B



Liberty House, Eastbury Avenue, Northwood, Middlesex  
Approximate Gross Internal Area  
1643 Sq Ft/153 Sq M  
Quoted Area Excludes 'Lift Shaft/Communal Area'



Third Floor

FOR ILLUSTRATIVE PURPOSES ONLY - NOT TO SCALE

The position & size of doors, windows, appliances and other features are approximate only.

--- Denotes restricted head height

© ehouse. Unauthorised reproduction prohibited. Drawing ref. dig/8550779/KKM

**ROBSONS**

Address 7 Clive Parade, Northwood, Middlesex, HA6 2QF

Tel: 01923 835355 northwood@robsonswb.com

[www.robsonswb.com](http://www.robsonswb.com)