



TWO BEDROOM TERRACED FAMILY HOME

Maycock Grove, Northwood, Middlesex, HA6 3PU

ROBSONS

TWO BEDROOM TERRACED FAMILY HOME

Maycock Grove, Northwood, Middlesex, HA6 3PU

**TWO BEDROOMS • CUL-DE-SAC LOCATION
• DRIVEWAY PARKING • DOWNSTAIRS W/C •
FAMILY BATHROOM • CLOSE TO STATION •
LIGHT AND SPACIOUS ROOMS •**

Description

This fantastic two bedroom house is positioned on a cul-de-sac within close proximity to Northwood Station and amenities.

The property has the benefit of off street parking, a beautiful rear garden and spacious living accommodation. To the ground floor, a well appointed kitchen, downstairs w/c and a large versatile reception room. To first floor, two double bedrooms and a family bathroom.





Location

Northwood provides a range of shopping facilities including Waitrose supermarket, a variety of restaurants and other amenities with the Metropolitan Line station providing access to Baker Street and The City. There is a plethora of state and private schooling together with a wide choice of recreational facilities, which include golf courses and fitness centres. The M1, M40 and M25 motorways are also accessible.

Additional Information

Tenure: Freehold

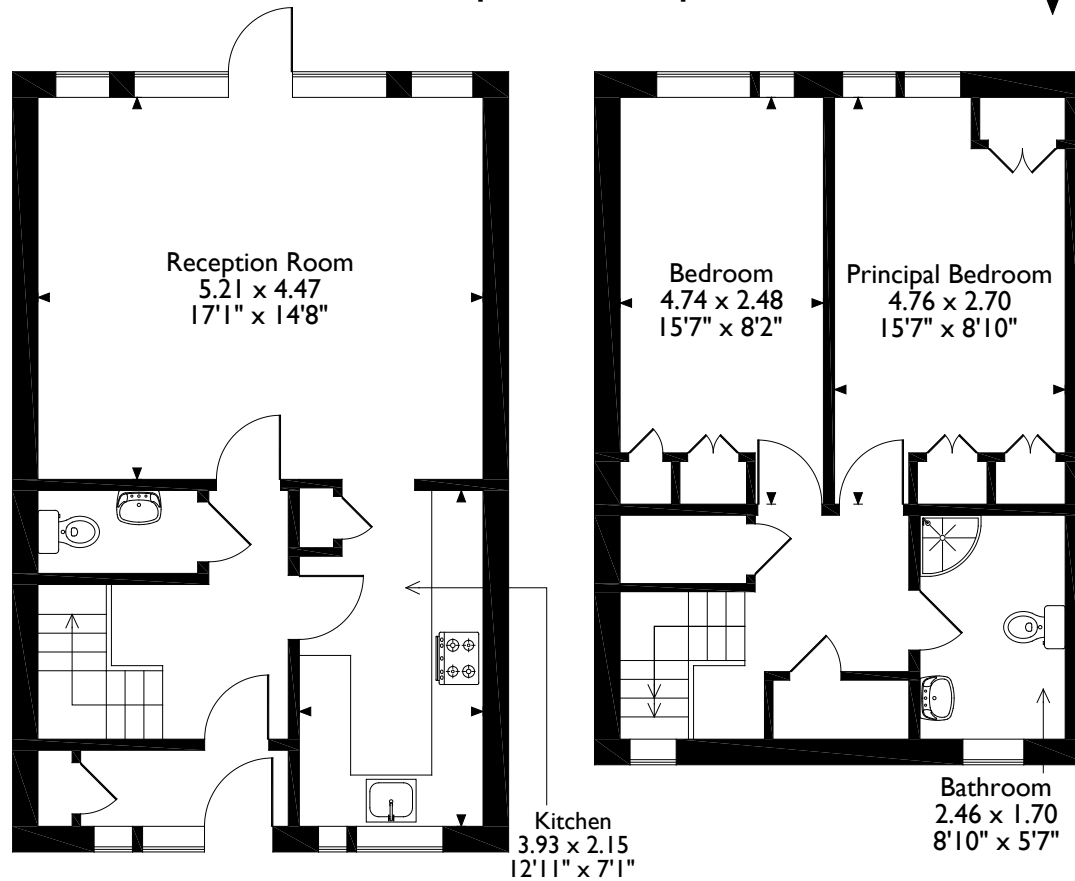
Local Authority: London Borough of Hillingdon

Council Tax: Band D

Energy Efficiency Rating: Band C



Maycock Grove, Northwood, Hertfordshire
Approximate Gross Internal Area
83 Sq M/894 Sq Ft



Ground Floor

First Floor

Please note that the location of doors, windows and other items are approximate and this floorplan is to be used for illustrative purposes only. Unauthorized reproduction is prohibited.

ROBSONS

Address 7 Clive Parade, Northwood, Middlesex, HA6 2QF

Tel: 01923 835355 northwood@robsonswb.com

www.robsonswb.com