



DETACHED FIVE BEDROOM FAMILY HOME

Brookdene Avenue, Watford, WD19 4LG

ROBSONS

DETACHED FIVE BEDROOM FAMILY HOME

Brookdene Avenue, Watford, WD19 4LG

DETACHED • FIVE BEDROOMS • PRINCIPAL BEDROOM WITH WALK-IN-WARDROBE • THREE FLOORS • OUTHOUSE • DRIVEWAY •

Description

This fantastic five bedroom, two bathroom detached home is offered to the market in a modern decorative order. The property has been skilfully extended to create spacious and versatile accommodation.

The property is set over three floors. The ground floor comprises a bright living room, a large kitchen/dining area with direct access out to the garden and a separate utility room. A further versatile sitting room offers ample space for various different uses.

To the first floor, the principal bedroom with a large walk-in wardrobe/dressing room, three further bedrooms and a well appointed three-piece bathroom. The second floor has been extended to create a beautiful suite with a modern en-suite and stunning views. The space within the eaves provides great storage.

Further benefits include a new driveway for several vehicles, a large outhouse/garden room and a downstairs w/c.





Location

Watford provides plenty of shops, restaurants and amenities. Bushey and Watford train stations are nearby offering access into central London, whilst nearby is the M25 and M1 Motorways which provide easy access to the national motorway network.

Additional Information

Tenure: Freehold

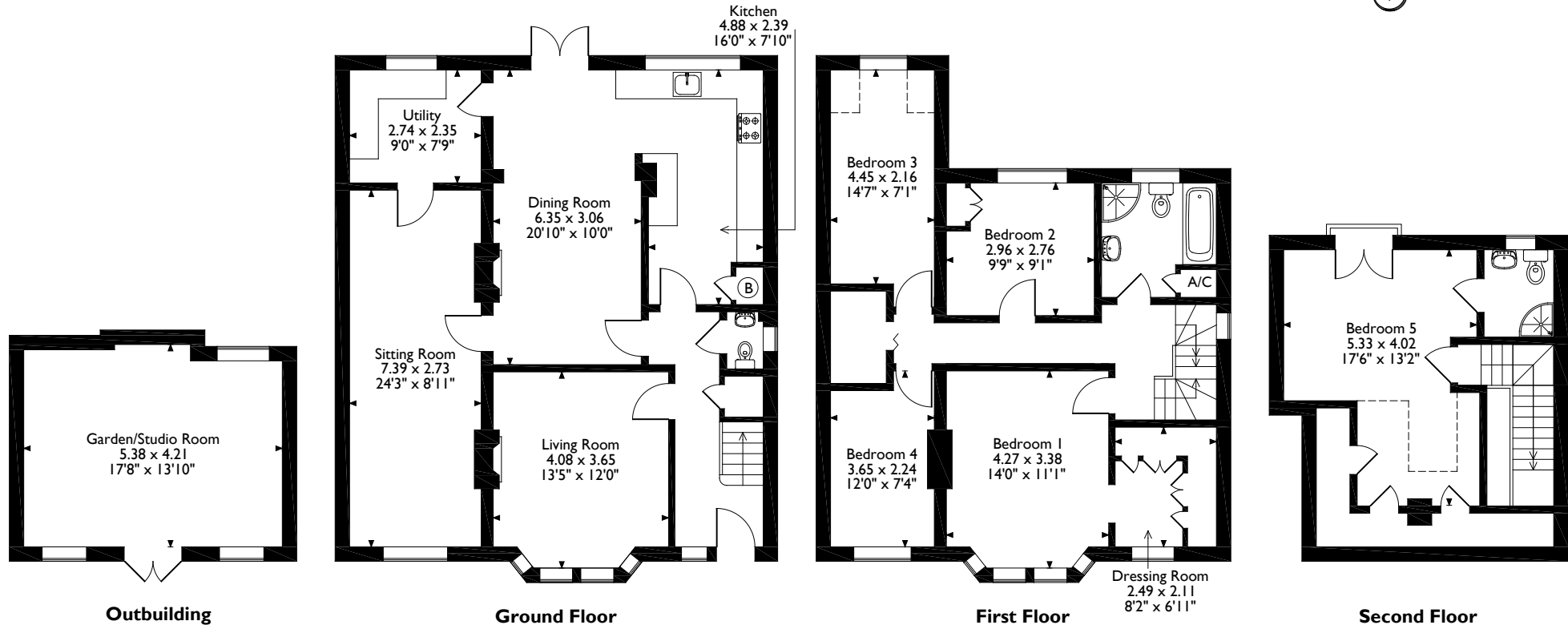
Local Authority: Three Rivers District Council

Council Tax: Band F

Energy Efficiency Rating: Band D



Brookdene Avenue, Watford, Hertfordshire
 Approximate Gross Internal Area
 Main House = 174 Sq M/1873 Sq Ft
 Outbuilding = 22 Sq M/237 Sq Ft
 Total = 196 Sq M/2110 Sq Ft



Please note that the location of doors, windows and other items are approximate and this floorplan is to be used for illustrative purposes only. Unauthorized reproduction is prohibited.



Address 7 Clive Parade, Northwood, Middlesex, HA6 2QF

Tel: 01923 835355 northwood@robsonswb.com

www.robsonswb.com