



## DETACHED THREE BEDROOM FAMILY HOME

---

Batchworth Lane, Northwood, Middlesex, HA6 3HF



# DETACHED THREE BEDROOM FAMILY HOME

Batchworth Lane, Northwood, Middlesex, HA6 3HF

**THREE BEDROOMS • OPEN-PLAN LIVING • LIGHT AND SPACIOUS • PRIVATE GARDEN • UTILITY ROOM • SET BACK FROM THE ROAD • DRIVEWAY PARKING • CLOSE TO STATION •**

## Description

This attractive and well-presented detached property offers three bedrooms, one bathroom to the first floor and one bedroom/study with an ensuite shower room to the ground floor. The spacious and modern open-plan kitchen, dining and living area looks out onto the mature and private rear garden.

There is also a large utility room ideal for storage or potential secondary chef's kitchen. The property is set back from the road presenting off-street parking for several vehicles and is positioned conveniently for access to local schooling, Eastbury Farm recreational park and tennis courts as well as local metropolitan line train stations.





### **Location**

Northwood provides a range of shopping facilities including Waitrose supermarket, a variety of restaurants and other amenities with the Metropolitan Line station providing access to Baker Street and the City. There is a plethora of state and private schooling together with a wide choice of recreational facilities, which include golf courses and fitness centres. The M1, M40 and M25 motorways are also accessible.

### **Additional Information**

Tenure: Freehold

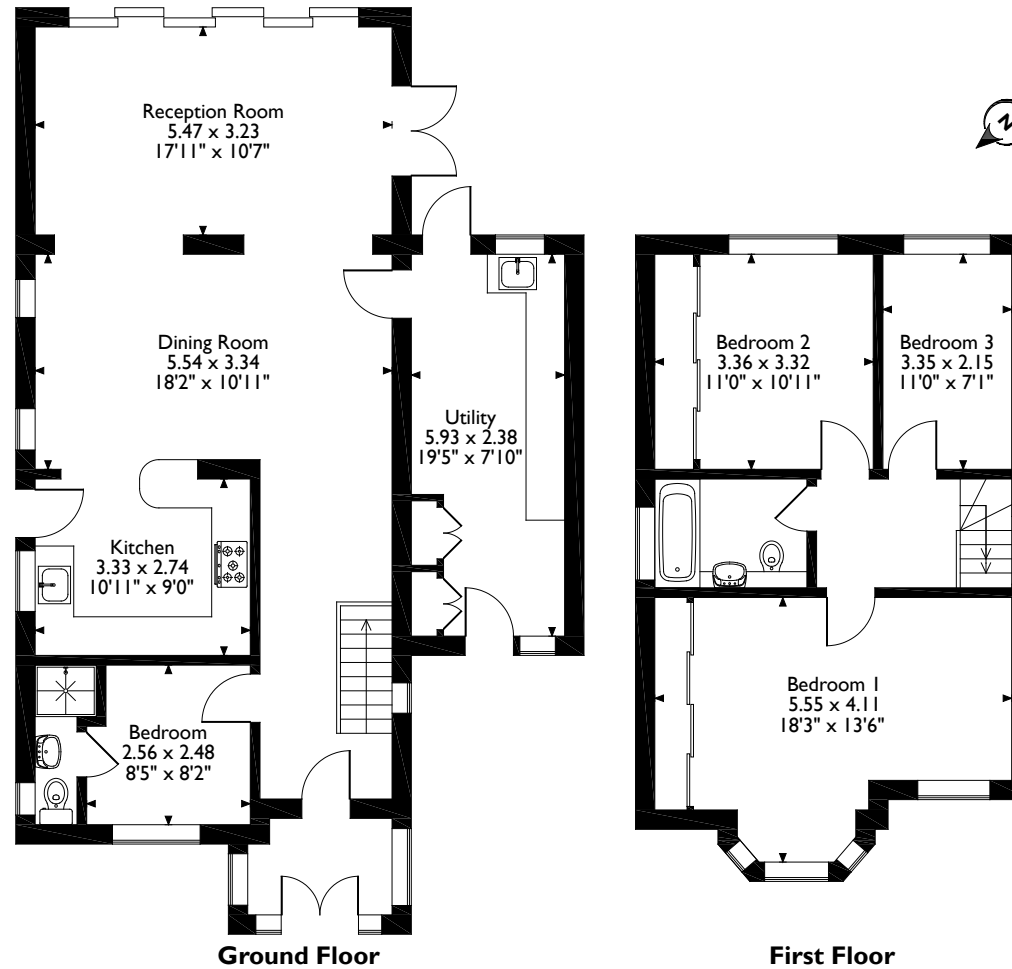
Local Authority: Three Rivers District Council

Council Tax: Band G

Energy Efficiency Rating: Band D



Batchworth Lane, Northwood  
Approximate Gross Internal Area  
136 Sq M / 1464 Sq Ft



Please note that the location of doors, windows and other items are approximate and this floorplan is to be used for illustrative purposes only. Unauthorized reproduction is prohibited.



Address 7 Clive Parade, Northwood, Middlesex, HA6 2QF

Tel: 01923 835355 northwood@robsonswb.com

[www.robsonswb.com](http://www.robsonswb.com)

www.  
the  
londonoffice.co.uk  
40 ST JAMES'S PLACE SW1