



ONE BEDROOM GROUND FLOOR APARTMENT

Sentis Court, Carew Road, Northwood, Middlesex, HA6 3NG



ONE BEDROOM GROUND FLOOR APARTMENT

Sentis Court, Carew Road, Northwood, Middlesex, HA6 3NG

GROUND FLOOR • NO ONWARD CHAIN • OFF-STREET PARKING • PRIVATE GARDEN • ENTRY PHONE SYSTEM • LARGE RECEPTION ROOM •

Description

This attractive ground floor apartment is offered to the market with the benefit of no onward chain.

The apartment comprises a large reception/dining room, modern kitchen, well appointed bathroom and double bedroom with doors leading to private garden. Other benefits include entry phone system, off-street parking and new double-glazed windows to be fitted. The rarely available apartment is situated in the sought after block Sentis Court, Carew Road which is a moments walk from the local amenities (Northwood Metropolitan Station and High Street).





Location

Northwood provides a range of shopping facilities, a Waitrose supermarket, restaurants and the Metropolitan Line Station providing access to Baker Street and state schools. Places of worship and recreational facilities are also well catered for in the surrounding area and major motorway links to M25 and M1 are nearby.

Additional Information

Tenure: Leasehold

Lease Length: 999 years from Feb 2023

Service Charge: £850 every 6 months

Ground Rent: peppercorn

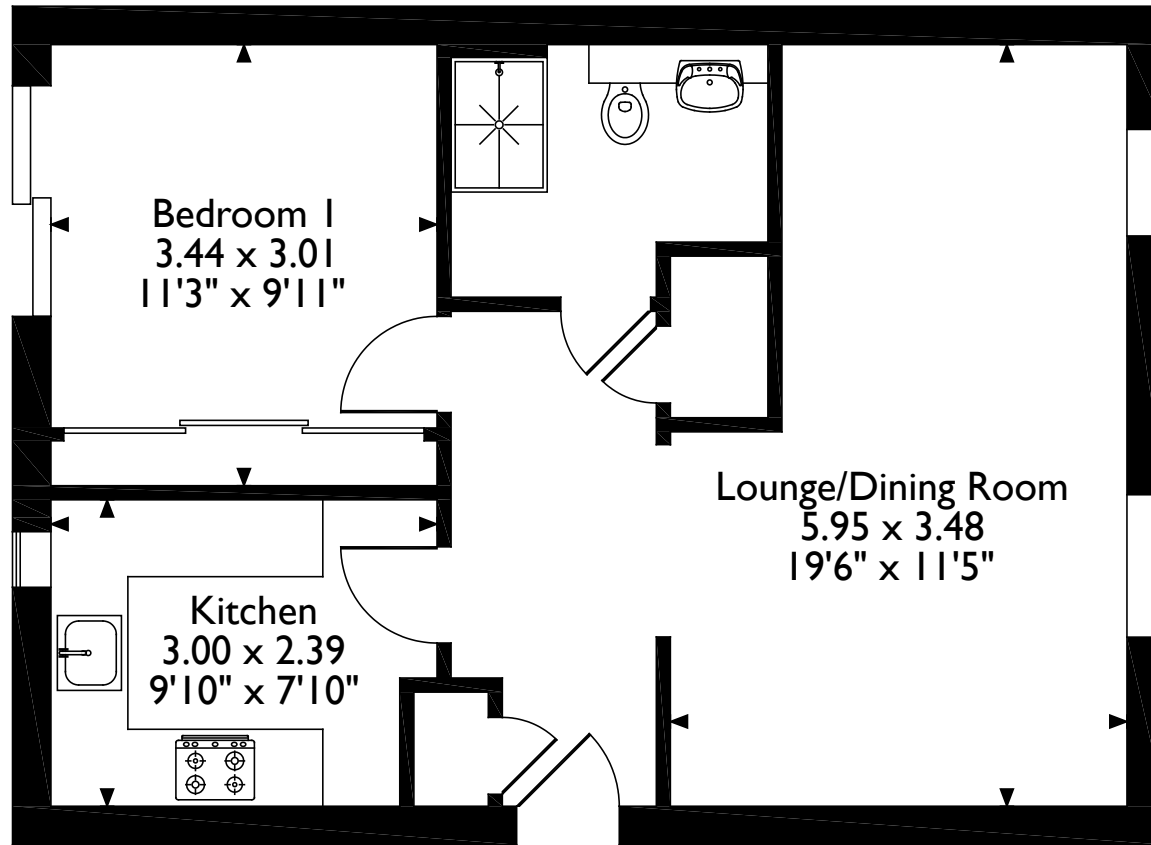
Local Authority: London Borough of Hillingdon

Council Tax: Band D

Energy Efficiency Rating: Band C



Carew Road, Northwood
Approximate Gross Internal Area
50 Sq M/538 Sq Ft



Ground Floor

Please note that the location of doors, windows and other items are approximate and this floorplan is to be used for illustrative purposes only. Unauthorized reproduction is prohibited.



Address 7 Clive Parade, Northwood, Middlesex, HA6 2QF
Tel: 01923 835355 northwood@robsonswb.com

www.robsonswb.com

www.
the
londonoffice.co.uk
40 ST JAMES'S PLACE SW1