



A 6 BEDROOM GATED HOUSE IN A SOUGHT AFTER LOCATION

Batchworth Lane, Northwood, Middlesex HA6 3HF

ROBSONS

A 6 BEDROOM GATED HOUSE IN A SOUGHT AFTER LOCATION

Batchworth Lane, Northwood, Middlesex HA6 3HF

THREE RECEPTION ROOMS • KITCHEN/DINER & UTILITY ROOM • SHOWER ROOM • PRINCIPAL BEDROOM WITH ENSUITE SHOWER ROOM • FIVE FURTHER BEDROOMS • BATHROOM • LANDSCAPED REAR GARDEN WITH HOME OFFICE • GATED DRIVEWAY • GARAGE • SCOPE TO EXTEND (STPP)

Description

An opportunity to acquire this six bedroom, two bathroom detached residence, with gated frontage and ample off street parking. This beautiful home has been tastefully enhanced by the current owners, creating a spacious and light filled interior perfectly suited for a growing family. The ground floor comprises a welcoming entrance hall leading through to an L-shaped living room, games room, dining room, and a stylish kitchen diner fitted with cream Shaker style cabinets, integrated appliances, quartz worktops, instant filtered hot/cold water tap, porcelain tiled flooring and bi-fold doors giving views and access to the secluded rear garden. Completing the ground floor is a utility room and a guest WC/shower room.





Description

To the first floor is the principal bedroom with an ensuite shower room, a further four double bedrooms, a good size single bedroom and a luxurious family bathroom with marble travertine floor/wall tiles and underfloor heating separate to the homes 'Hive' heating control. A secluded, South Easterly facing rear garden provides the perfect environment for outside entertaining on its sandstone patio seating area with palm trees, overlooking the well-manicured lawn, mature flowerbeds and the recently added fully insulated low maintenance home office and store room. Timber gates at the front open to a large shingled driveway, providing ample off street parking and access to an integral garage with a remote-controlled insulated garage door and side access to front & rear gardens. The garage has fully insulated walls and is serviced with a hot/cold water tap. There are external electrical sockets and outside taps to both front & rear gardens.

Location

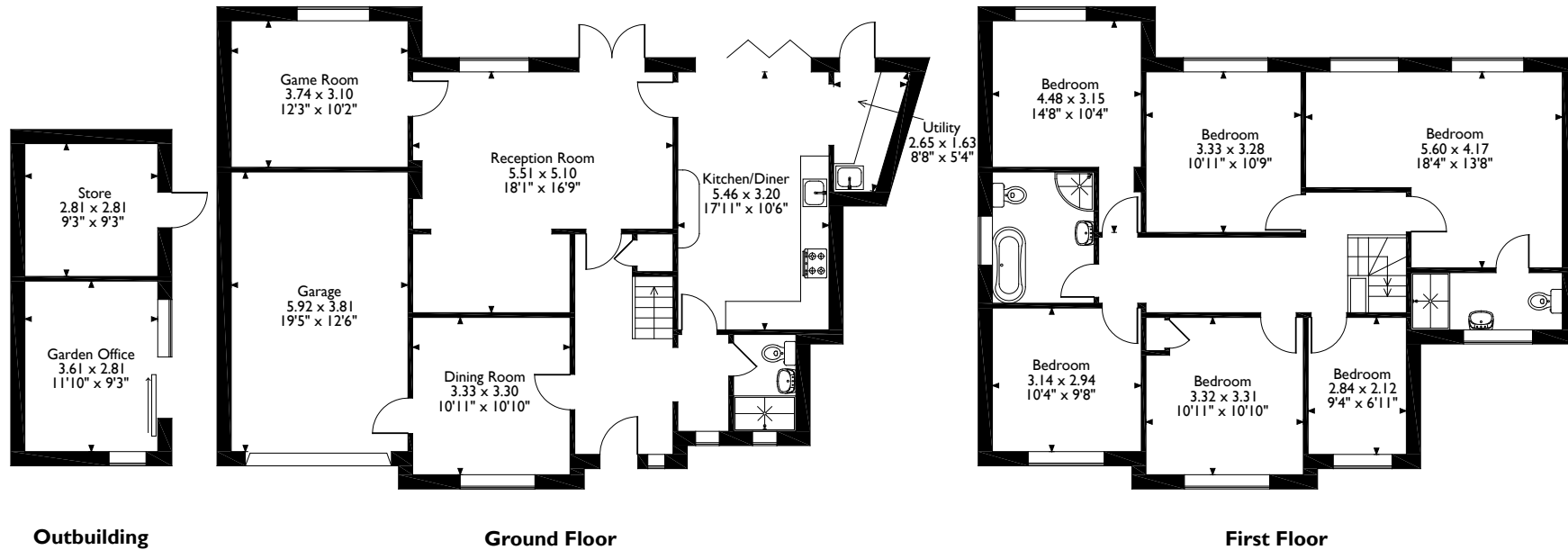
Northwood provides a range of shopping facilities, supermarket, restaurants and the Metropolitan Line Station providing access to Baker Street and the city beyond. The area has a range of both private and state schools and motorway links to M25 and M1 are nearby.

Additional Information

Tenure: Freehold Energy Efficiency Rating: E
Local Authority: Three Rivers District Council
Council Tax Band: G



Batchworth Lane, Northwood
 Approximate Gross Internal Area
 Main House = 202 Sq M/2175 Sq Ft
 Outbuilding = 10 Sq M/108 Sq Ft
 Outside Store = 8 Sq M/86 Sq Ft
 Total = 220 Sq M/2369 Sq Ft



Please note that the location of doors, windows and other items are approximate and this floorplan is to be used for illustrative purposes only. Unauthorized reproduction is prohibited.



7 Clive Parade, Northwood, Middlesex HA6 2QF
 Tel: 01923 835355 northwood@robsonswb.com
www.robsonswb.com



Important notice: Robsons, their clients and any joint agents give notice that 1: They are not authorised to make or give any representations or warranties in relation to the property either here or elsewhere, either on their own behalf or on behalf of their client or otherwise. They assume no responsibility for any statement that may be made in these particulars. These particulars do not form part of any offer or contract and must not be relied upon as statements or representations of fact. 2: Any areas, measurements or distances are approximate. Plot sizes and dimensions are taken from Promap and are approximate. The text, photographs and plans are for guidance only and are not necessarily comprehensive. It should not be assumed that the property has all necessary planning, building regulation or other consents and Robsons have not tested any services, equipment or facilities. Purchasers must satisfy themselves by inspection or otherwise.