



DETACHED SEVEN BEDROOM PERIOD PROPERTY

Eastbury Road, Northwood, Middlesex





Eastbury Road, Northwood, Middlesex

RECEPTION HALL • TWO CLOAKROOMS • FOUR RECEPTION ROOMS • CONSERVATORY • KITCHEN/FAMILY ROOM • UTILITY ROOM • FIRST FLOOR - FOUR BEDROOMS TWO WITH ENSUITE BATHROOMS • TOP FLOOR - BEDROOM WITH ENSUITE BATHROOM • DOOR TO SELF CONTAINED SUITE COMPRISING TWO BEDROOMS, BATHROOM AND OFFICE • FULLY AIR CONDITIONED • TANDEM GARAGE • SECLUDED GROUNDS •

Description

This exceptional and distinctive 7 bedroom, 4 bathroom character property is set on a generous well established plot approaching ½ acre* positioned moments from the heart of Northwood town centre. Blending period features and a stylish and modern finish, this attractive detached family home boasts just shy of 5000 sqft of well balanced and generous accommodation set over three floors. The house is set back from the road and showcases beautiful landscaped garden to the front and a sweeping carriage driveway providing off street parking for multiple vehicles and access to the tandem garage. To the rear is a superb private rear garden that has been designed specifically to maximise outside entertaining and provides an outdoor kitchen, relaxation area and boxed planting and mature trees. The property boasts many attractive features, internal viewing is essential to appreciate the quality of this unique Northwood residence. (*dimensions taken from pro map).

Location

Northwood provides a range of shopping facilities, a Waitrose supermarket, restaurants and the Metropolitan Line Station providing access to Baker Street and the city beyond. The area has a range of both private and state schools. Places of worship and recreational facilities are also well catered for in the surrounding area and major motorway links to M25 and M1 are nearby.

Guide Price: £3,300,000

Tenure: Freehold

Energy Efficiency Rating: E

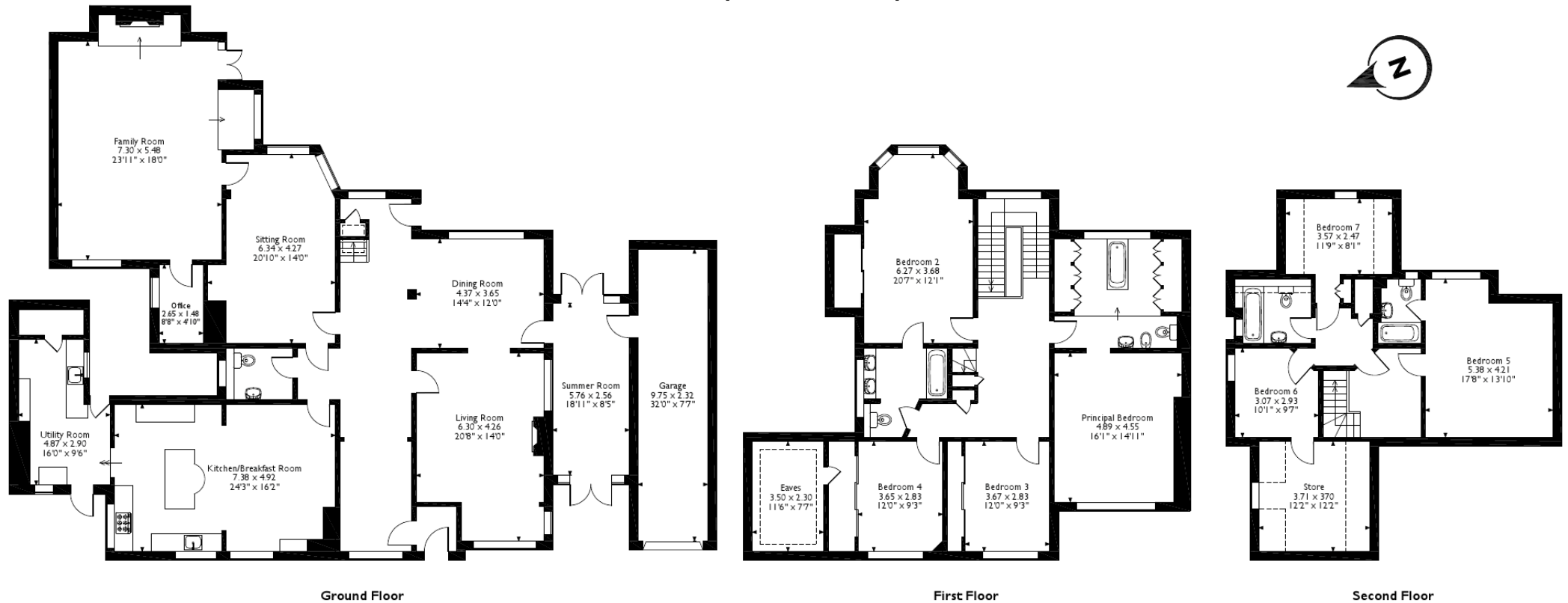
Local Authority: London Borough of Hillingdon





Eastbury Road, Northwood

Approximate Gross Internal Area 442 Sq M/4758 Sq Ft



Please note that the location of doors, windows and other items are approximate and this floorplan is to be used for illustrative purposes only. Unauthorized reproduction is prohibited.

ROBSONS

Address 7 Clive Parade, Northwood, Middlesex, HA6 2QF

Tel: 01923 835355 northwod@robsonswb.com

www.robsonswb.com

www.

the
londonoffice.co.uk

40 ST JAMES'S PLACE SW1

