



LDG

LISSON STREET
Marylebone









ADDRESS	POSTCODE	LOCAL AUTHORITY	RENT
Lisson Street, London	NW1 5DA	Westminster City Council	£634 Per Week

THE SPACE

A modern apartment set on a 2nd floor of a new development behind the period façade, only moments away from Marylebone underground station.

Comprising of a spacious reception room, a large open-plan fully fitted kitchen with a breakfast bar, two double bedrooms and a modern, fully tiled shower room. This property further benefits from high-quality fixtures and fittings, neutral carpets and décor as well as great natural light throughout. .

Located just North of Marylebone, with walking distance to Marylebone station and Baker Street, providing great transport links to the West End, City and Countrywide. Lisson Street is quietly located just off Lisson Grove- a primarily residential location within the City of Westminster. Lisson Grove is an extension of some of the capital's most affluent and desirable residential areas, with St John's Wood, Maida Vale and Marylebone comprising its immediate surroundings. Its prestigious location enhanced by its proximity to some of the West End's leading retail and entertainment destinations, with boutique shopping and dining in Marylebone Village and flagship stores and theatres of West End both within walking distance.

Specifics

ACCOMMODATION

& FEATURES

- Available 18th of December
- Spacious Lounge
- Open-Plan Kitchen
- Two Double Bedrooms
- Furnished
- Close to Edgware Road Station
- Close to Marylebone Station
- Managed by LDG

COMMUTE

Edgware Road - 280m

Marylebone - 450m

Baker Street - 850m

ON YOUR DOORSTEP

Firebrand Pizza

Briciole

Gino's Coffee Bar

Regents Bar and Kitchen

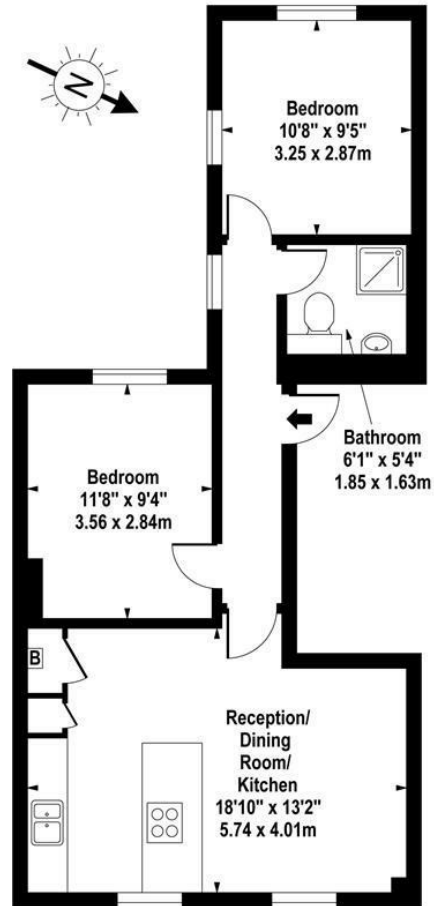
Pure Gym

Regents Park

Lisson Street

Lisson Street, NW1 5DA

Approx. 556 sq. feet (51.65 sq. metres)



Second Floor

For Illustration Purposes Only - Not To Scale

www.goldlens.co.uk

Ref. No. 001594

ldg.co.uk

Ready to talk?



**MAX
CHAUDRY**

DD: 020 7291 0998
M: 0775 687 3938
E: max@ldg.co.uk



**VAS
VASILOKONSTANTAKIS**

DD: 020 7292 0990
M: 07809 410 252
E: vas@ldg.co.uk



**THEMIS
POLLALIS**

DD: 020 4513 6751
M: 07809 410 182
E: themis@ldg.co.uk



**EMLYN
YOUNG**

DD: 020 7290 0593
M: 07881 971 315
E: emlyn@ldg.co.uk



**MINETTE
RIBEIRO SA**

DD: 0207291 0997
M: 07796 427 363
E: minette@ldg.co.uk



**GEORGIE
MACKAY-STEWART**

DD: 020 4542 4873
M: 07551 780 308
E: georgie@ldg.co.uk



**MEGAN
BATTLE**

DD: 020 7290 0598
M: 07391 852 165
E: megan@ldg.co.uk



**SHANNON
TUPPER**

DD: 020 4513 6750
M: 07920 015 392
E: shannon@ldg.co.uk

LDG | www.ldg.co.uk
53 Great Titchfield Street
London, W1W 7PJ

Lisson Street

