



LDG

PEARSON SQUARE

£2,850,000 STC



Pearson Square





**ADDRESS**

Pearson Square, London

POSTCODE

W1T 3BP

THE SPACE

A stunning apartment in the landmark Pearson Square development, in the heart of Fitzrovia. Situated on the 8th floor this bright property offers superb views, outdoor space and spacious accommodation. There is the benefit of 24hr onsite concierge and security, secure underground parking and a wide range of additional onsite facilities.

PRICE

£2,850,000, subject to contract

TENURE

Leasehold - 990 years remaining

SERVICE CHARGE

£14,700 pa

GROUND RENT

£1,147.00 pa

COUNCIL TAX

Westminster Band G

RESIDENTS PARKING

Secure underground

Pearson Square

Approximate Gross Internal Area = 120.6 sq m / 1298 sq ft

Floor Plan

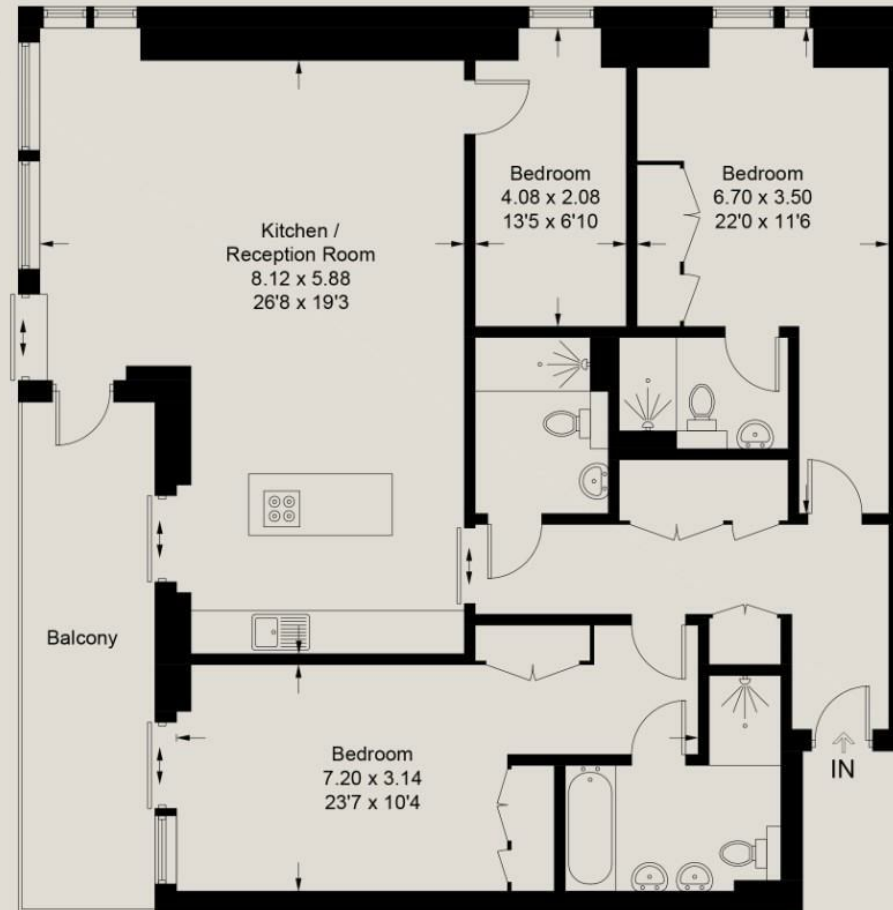


Illustration for identification purposes only, measurements are approximate, not to scale. floorplansUsketch.com © (ID1127221)

Ready to talk?



**BEN
EVEREST**

DD: 020 7290 0592
M: 07944 967637
E: ben@ldg.co.uk



**DAVID
CALDEIRA**

DD: 020 4513 6756
M: 07368 333 545
E: david@ldg.co.uk



**EMLYN
YOUNG**

DD: 020 7290 0593
M: 07881 971 315
E: emlyn@ldg.co.uk



**ROBYN
CORRANCE**

DD: 020 7290 0594
T: 020 7580 1010
E: robyn@ldg.co.uk