



LDG

GOSFIELD STREET  
Fitzrovia



Gosfield Street







<b>ADDRESS</b>	<b>POSTCODE</b>	<b>LOCAL AUTHORITY</b>	<b>RENT</b>
Gosfield Street, London	W1W 6HL	Westminster	£495 Per Week

**THE SPACE**

Set on a quiet street in the heart of Fitzrovia and just a short walk to Great Titchfield Street which offers a great selection of cafes, and restaurants. Comprising a bright reception room with a separate kitchen, a good size double bedroom and a bathroom with a shower.

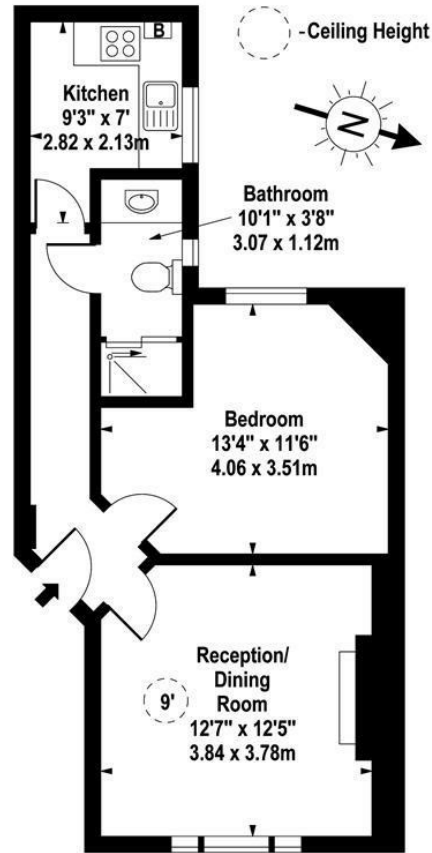
This lovely apartment also benefits from being only few doors away from trendy cafés, restaurants and gastro pubs, as well as local amenities of Charlotte and Great Portland Streets, along with strolling distance from Regents Park. Goodge Street and Oxford Circus underground stations are also close by so is the Marylebone, Soho, Covent Garden, Bloomsbury and Mayfair areas.

Specifics

<b>ACCOMMODATION &amp; FEATURES</b>	<b>COMMUTE</b>	<b>ON YOUR DOORSTEP</b>
<ul style="list-style-type: none"> <li>• Available 26th of November</li> <li>• One Bedroom Apartment</li> <li>• Large Windows</li> <li>• Separate Kitchen</li> <li>• Shower Room</li> <li>• Double Bedroom at the Rear</li> <li>• Quiet Street</li> <li>• Managed by LDG</li> </ul>	<p>Great Portland Street - 600m</p> <p>Oxford Circus - 600m</p> <p>Regents Park - 800m</p>	<p>Riding House Café</p> <p>Naroon</p> <p>Kaffeine</p> <p>The Kings Arms</p> <p>Stadium Body Works</p> <p>The Regents Park</p>

**Gosfield Street,  
Fitzrovia, W1W 6HL**

Approx. 446 sq. feet (41.43 sq. metres)



**Raised Ground Floor**

For Illustration Purposes Only - Not To Scale

[www.goldlens.co.uk](http://www.goldlens.co.uk)

Ref. No. 009251M

[ldg.co.uk](http://ldg.co.uk)

Ready to talk?



**MAX  
CHAUDRY**

DD: 020 7291 0998  
M: 0775 687 3938  
E: max@ldg.co.uk



**VAS  
VASILOKONSTANTAKIS**

DD: 020 7292 0990  
M: 07809 410 252  
E: vas@ldg.co.uk



**THEMIS  
POLLALIS**

DD: 020 4513 6751  
M: 07809 410 182  
E: themis@ldg.co.uk



**EMLYN  
YOUNG**

DD: 020 7290 0593  
M: 07881 971 315  
E: emlyn@ldg.co.uk



**MINETTE  
RIBEIRO SA**

DD: 0207291 0997  
M: 07796 427 363  
E: minette@ldg.co.uk



**GEORGIE  
MACKAY-STEWART**

DD: 020 4542 4873  
M: 07551 780 308  
E: georgie@ldg.co.uk



**MEGAN  
BATTLE**

DD: 020 7290 0598  
M: 07391 852 165  
E: megan@ldg.co.uk



**SHANNON  
TUPPER**

DD: 020 4513 6750  
M: 07920 015 392  
E: shannon@ldg.co.uk

LDG | [www.ldg.co.uk](http://www.ldg.co.uk)  
53 Great Titchfield Street  
London, W1W 7PJ

Gosfield Street

