



LDG

CHURCH STREET
Marylebone



LDG.CO.UK

Church Street







ADDRESS	POSTCODE	LOCAL AUTHORITY	RENT
Church Street, London	NW8 8EP	Westminster	£425 Per Week

THE SPACE

A large 1 bedroom apartment located on the basement floor of a Georgian period conversion only moments away from Marylebone station and Edgware Road.

The property is furnished with wooden flooring throughout with a large reception room, a modern separate kitchen, good size double bedroom and a modern bathroom suite. The property comes furnished

Located on Church street just across the road from the famous Alfie's Antiques market, the apartment is only short walk to Marylebone station as well as Regents Canal. Also close to Baker street, Marylebone, St Johns Wood, Edgware Road, West End and open spaces of Regents Park.

Specifics

ACCOMMODATION & FEATURES

- Available 11th of October
- Large Apartment
- 650 Sq ft
- Separate Kitchen
- Furnished
- Wooden Flooring
- Modern Bathroom
- Managed by LDG

COMMUTE

- Marylebone Station - 500m
- Edgware Road - 600m
- Baker Street - 800m

ON YOUR DOORSTEP

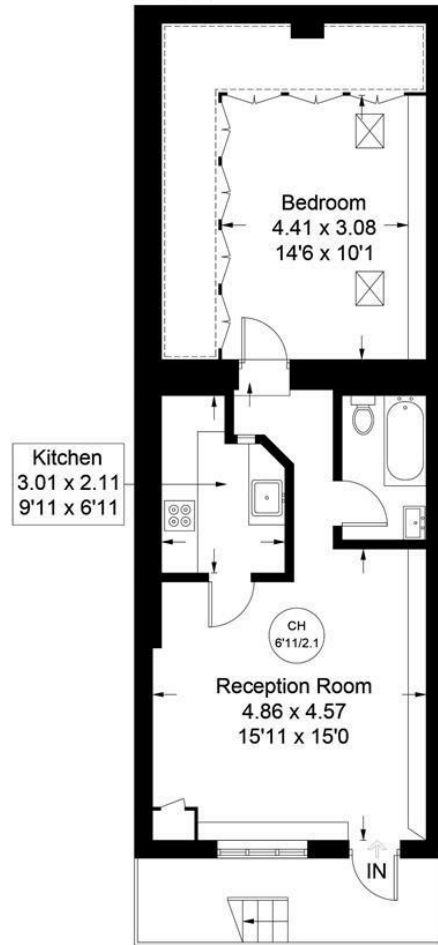
- Firebrand Pizza
- Briciole
- Gino's Coffee Bar
- Regents Bar and Kitchen
- PureGym

Church Street

Approximate Gross Internal Area = 60.4 sq m / 650 sq ft



 = Reduced headroom below 1.5m / 5'0



Lower Ground Floor

Illustration for identification purposes only, measurements are approximate, not to scale. floorplansUsketch.com © (ID668183)

LDG.CO.UK

Ready to talk?



**MAX
CHAUDRY**

DD: 020 7291 0998
M: 0775 687 3938
E: max@ldg.co.uk



**VAS
VASILOKONSTANTAKIS**

DD: 020 7292 0990
M: 07809 410 252
E: vas@ldg.co.uk



**THEMIS
POLLALIS**

DD: 020 4513 6751
M: 07809 410 182
E: themis@ldg.co.uk



**EMLYN
YOUNG**

DD: 020 7290 0593
M: 07881 971 315
E: emlyn@ldg.co.uk



**MINETTE
RIBEIRO SA**

DD: 0207291 0997
M: 07796 427 363
E: minette@ldg.co.uk



**GEORGIE
MACKAY-STEWART**

DD: 020 4542 4873
M: 07551 780 308
E: georgie@ldg.co.uk



**MEGAN
BATTLE**

DD: 020 7290 0598
M: 07391 852 165
E: megan@ldg.co.uk



**SHANNON
TUPPER**

DD: 020 4513 6750
M: 07920 015 392
E: shannon@ldg.co.uk

LDG | www.ldg.co.uk
53 Great Titchfield Street
London, W1W 7PJ

Church Street

