



LDG

HALLAM STREET  
Marylebone



Hallam Street







<b>ADDRESS</b>	<b>POSTCODE</b>	<b>LOCAL AUTHORITY</b>	<b>RENT</b>
Hallam Street, Marylebone	W1W 6JP	Westminster City Council	£625 Per Week

### THE SPACE

A lovely apartment finished to an excellent standard and located at 49 Hallam Street which is a sought-after development with 24hr concierge service and comes with heating and hot water included.

The apartment has a very bright reception room, a small kitchenette, a good size double bedroom with built-in wardrobes and a large window allowing in plenty of light and a modern en-suite bathroom. The apartment has high ceilings, is furnished and has large windows and wooden flooring throughout.

Hallam Street is located in Marylebone and is just a short walk to the surrounding local shops, cafes, and restaurants. Marylebone village is only a short away as well as Soho and the world-famous shopping destinations of Oxford Street and Regent Street.

Specifics

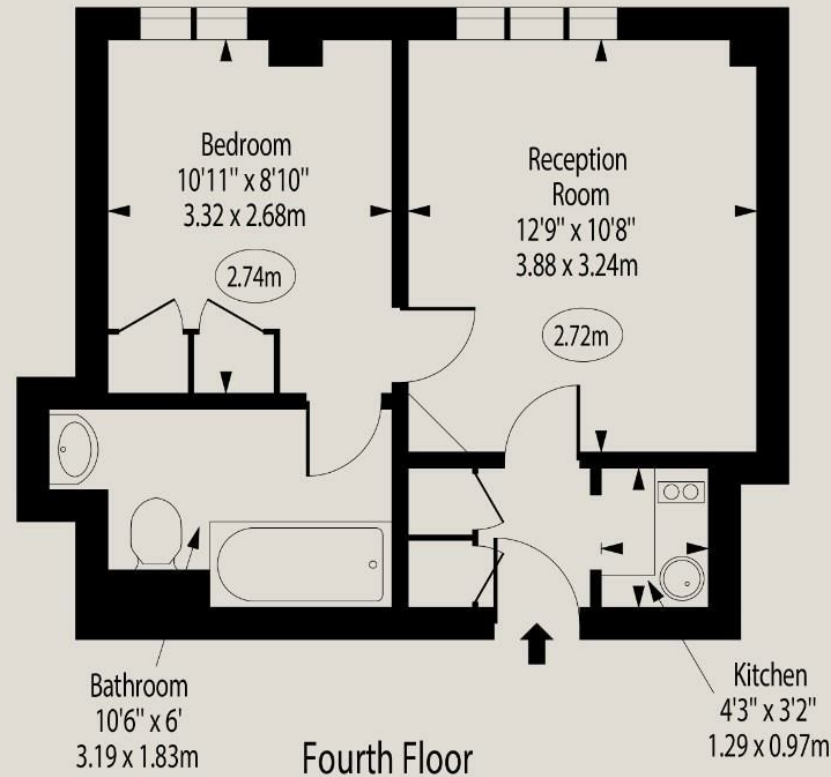
<b>ACCOMMODATION &amp; FEATURES</b>	<b>COMMUTE</b>	<b>ON YOUR DOORSTEP</b>
<ul style="list-style-type: none"> <li>• Available 4th of October</li> <li>• 24hr Concierge</li> <li>• Wooden Flooring</li> <li>• En-Suite bathroom</li> <li>• Furnished</li> <li>• Marylebone Location</li> <li>• Inclusive of heating and hot water</li> <li>• Managed by LDG</li> </ul>	<p>Regents Park - 644m</p> <p>Oxford Circus - 805m</p>	<p>Kaffeine</p> <p>Caravan</p> <p>Riding House Cafe</p> <p>Kings Arms</p> <p>The Regents Park</p> <p>Pure Gym</p>

Hallam Street

# Hallam Street, W1W 6JP

Approx. Area 340 sq. feet (31.59 sq. metres)

○ - Ceiling Height



Fourth Floor

For Illustration Purposes Only - Not To Scale

[www.goldlens.co.uk](http://www.goldlens.co.uk)

Ref. No. 021407R

Hallam Street

Ready to talk?



**MAX  
CHAUDRY**

DD: 020 7291 0998  
M: 0775 687 3938  
E: max@ldg.co.uk



**VAS  
VASILOKONSTANTAKIS**

DD: 020 7292 0990  
M: 07809 410 252  
E: vas@ldg.co.uk



**THEMIS  
POLLALIS**

DD: 020 4513 6751  
M: 07809 410 182  
E: themis@ldg.co.uk



**EMLYN  
YOUNG**

DD: 020 7290 0593  
M: 07881 971 315  
E: emlyn@ldg.co.uk



**MINETTE  
RIBEIRO SA**

DD: 0207291 0997  
M: 07796 427 363  
E: minette@ldg.co.uk



**GEORGIE  
MACKAY-STEWART**

DD: 020 4542 4873  
M: 07551 780 308  
E: georgie@ldg.co.uk



**MEGAN  
BATTLE**

DD: 020 7290 0598  
M: 07391 852 165  
E: megan@ldg.co.uk



**SHANNON  
TUPPER**

DD: 020 4513 6750  
M: 07920 015 392  
E: shannon@ldg.co.uk

LDG | [www.ldg.co.uk](http://www.ldg.co.uk)  
53 Great Titchfield Street  
London, W1W 7PJ

Hallam Street

