



LDG

RIDING HOUSE STREET
Fitzrovia



Riding House Street







ADDRESS	POSTCODE	LOCAL AUTHORITY	RENT
Riding House Street, London W1W 7ER		Westminster	£1,153 Per Week

THE SPACE

A modern development located in the heart of Fitzrovia, W1 offering secure entry and daytime porter. Offering an excellent living space with an open plan separate kitchen, and a good size reception room leading onto a private terrace. West One House is just a short walk to the local cafes' of Fitzrovia. The property is located on the third floor (lift) and comprises of three bedrooms and two bathrooms.

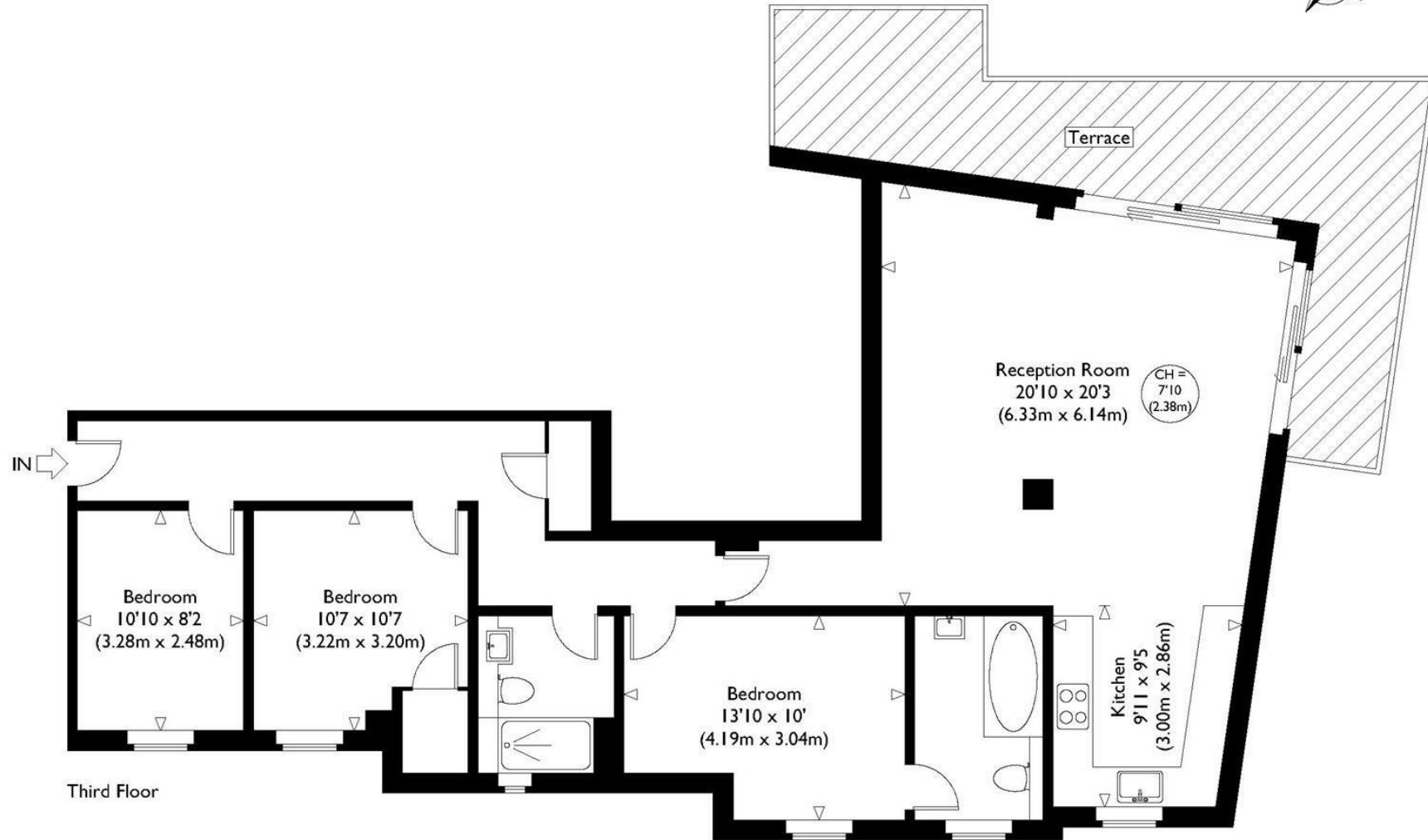
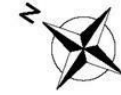
A wealth of fantastic restaurants can be found on nearby Charlotte Street, while the comprehensive attractions of Oxford Street, Covent Garden and Soho are also within good distance. Transport links include Oxford Circus (Bakerloo, Victoria and Central lines) and Goodge Street (Northern line) Underground stations.

Specifics

ACCOMMODATION & FEATURES	COMMUTE	ON YOUR DOORSTEP
<ul style="list-style-type: none"> • Available 23rd of August • Modern Development • Private Terrace • Three Bedrooms • Furnished • Wooden Flooring • Open Plan Kitchen • Managed by LDG 	<p>Oxford Circus (480m) Goodge Street (640m)</p>	<p>Riding House Café Kings Arms The Arber Garden Kaffeine Pure Gym The Regents Park</p>

Riding House Street

West One House



Approximate Gross Internal Floor Area : 1122 sq ft / 104.2 sq m
 Illustration for identification purposes only, measurements are approximate, not to scale.

Ready to talk?



**MAX
CHAUDRY**

DD: 020 7291 0998
M: 0775 687 3938
E: max@ldg.co.uk



**VAS
VASILOKONSTANTAKIS**

DD: 020 7292 0990
M: 07809 410 252
E: vas@ldg.co.uk



**THEMIS
POLLALIS**

DD: 020 4513 6751
M: 07809 410 182
E: themis@ldg.co.uk



**EMLYN
YOUNG**

DD: 020 7290 0593
M: 07881 971 315
E: emlyn@ldg.co.uk



**MINETTE
RIBEIRO SA**

DD: 0207291 0997
M: 07796 427 363
E: minette@ldg.co.uk



**GEORGIE
MACKAY-STEWART**

DD: 020 4542 4873
M: 07551 780 308
E: georgie@ldg.co.uk



**MEGAN
BATTLE**

DD: 020 7290 0598
M: 07391 852 165
E: megan@ldg.co.uk



**SHANNON
TUPPER**

DD: 020 4513 6750
M: 07920 015 392
E: shannon@ldg.co.uk

LDG | www.ldg.co.uk
53 Great Titchfield Street
London, W1W 7PJ

Riding House Street

