



LDG

65 LISSON STREET  
Marylebone



65 Lisson Street









<b>ADDRESS</b>	<b>POSTCODE</b>	<b>LOCAL AUTHORITY</b>	<b>RENT</b>
65 Lisson Street, Marylebone	NW1 5DA	Westminster City Council	£692 Per Week

## THE SPACE

A modern apartment set on a 2nd floor of a new development behind the period façade, only moments away from Marylebone underground station.

Comprising of a spacious reception room, a large open-plan fully fitted kitchen with a breakfast bar, two double bedrooms and a modern, fully tiled shower room. This property further benefits from high-quality fixtures and fittings, neutral carpets and décor as well as great natural light throughout. Residents will also benefit from free membership of the local car club and a secure car parking space within a walking distance to the building.

Located just North of Marylebone, with walking distance to Marylebone station and Baker Street, providing great transport links to the West End, City and Countrywide. Lisson Street is quietly located just off Lisson Grove- a primarily residential location within the City of Westminster. Lisson Grove is an extension of some of the capital's most affluent and desirable residential areas, with St John's Wood, Maida Vale and Marylebone comprising its immediate surroundings. Its prestigious location enhanced by its proximity to some of the West End's leading retail and entertainment destinations, with boutique shopping and dining in Marylebone Village and flagship stores and theatres of West End both within walking distance.

Specifics

### ACCOMMODATION

#### & FEATURES

- Available 19th of September
- Spacious Lounge
- Open-Plan Kitchen
- Two Double Bedrooms
- Furnished
- Close to Edgware Road Station
- Close to Marylebone Station
- Managed by LDG

### COMMUTE

Baker Street - 850m  
 Edgware Road - 280m  
 Marylebone - 450m

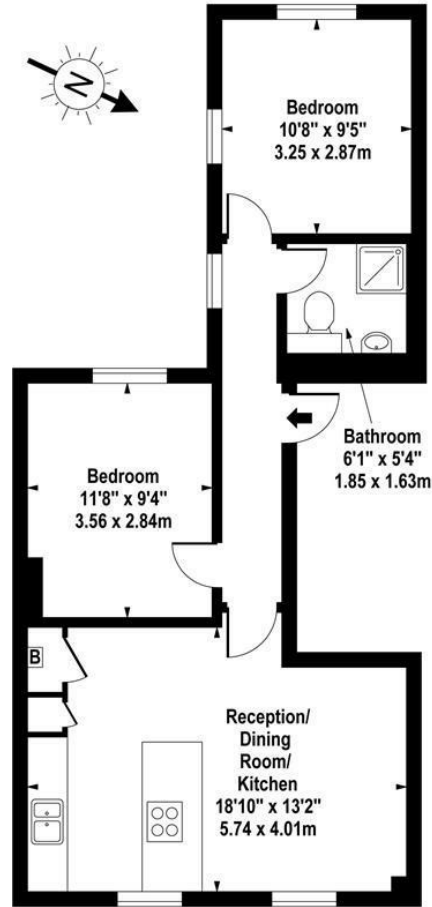
### ON YOUR DOORSTEP

Firebrand Pizza  
 Briciole  
 Gino's Coffee Bar  
 Regents Bar and Kitchen  
 Pure Gym  
 Regents Park

**65 Lisson Street**

### Lisson Street, NW1 5DA

Approx. 556 sq. feet (51.65 sq. metres)



#### Second Floor

For Illustration Purposes Only - Not To Scale

[www.goldlens.co.uk](http://www.goldlens.co.uk)

Ref. No. 001594

[ldg.co.uk](http://ldg.co.uk)



Ready to talk?



**MAX  
CHAUDRY**

DD: 020 7291 0998  
M: 0775 687 3938  
E: max@ldg.co.uk



**VAS  
VASILOKONSTANTAKIS**

DD: 020 7292 0990  
M: 07809 410 252  
E: vas@ldg.co.uk



**THEMIS  
POLLALIS**

DD: 020 4513 6751  
M: 07809 410 182  
E: themis@ldg.co.uk



**EMLYN  
YOUNG**

DD: 020 7290 0593  
M: 07881 971 315  
E: emlyn@ldg.co.uk



**MINETTE  
RIBEIRO SA**

DD: 0207291 0997  
M: 07342 679 424  
E: minette@ldg.co.uk



**GEORGIE  
MACKAY-STEWART**

DD: 020 4542 4873  
M: 07551 780 308  
E: georgie@ldg.co.uk



**MEGAN  
BATTLE**

DD: 020 7290 0598  
M: 07391 852 165  
E: megan@ldg.co.uk



**SHANNON  
TUPPER**

DD: 020 4513 6750  
M: 07920 015 392  
E: shannon@ldg.co.uk

LDG | [www.ldg.co.uk](http://www.ldg.co.uk)  
53 Great Titchfield Street  
London, W1W 7PJ

65 Lisson Street

