



LDG

WEYMOUTH STREET

Marylebone

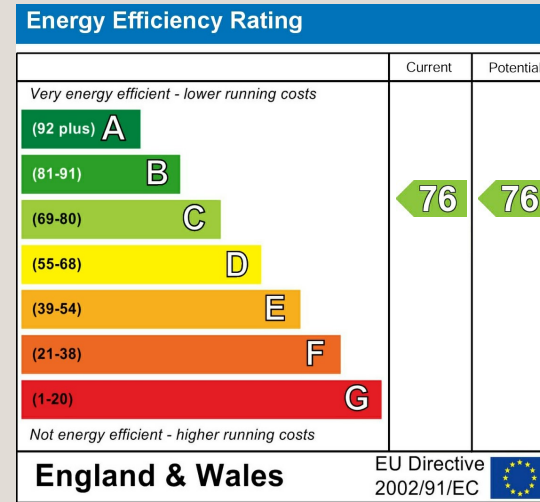
£890,000 STC



Weymouth Street







**ADDRESS**

Weymouth Street, London

POSTCODE

W1W 5BX

THE SPACE

This stylish one-bedroom apartment is located on the second floor of a modern portered development. The spacious layout features a separate kitchen, a west-facing reception room with a dining area, and a smart double bedroom with ample built-in storage.

Conveniently situated just off Portland Place, this property offers easy access to Marylebone Village, Fitzrovia, Regent's Park, and the West End.

ACCOMMODATION**& FEATURES**

- One Double Bedroom
- Spacious Reception Area
- Separate Kitchen
- West Facing
- Second Floor
- Smart Portered Building

ON YOUR DOORSTEP

108 Brasserie
Caravan
Clipstone
Portland
Naroon

PRICE

£890,000, subject to contract

TENURE

Leasehold - 110 years remaining

SERVICE CHARGE

£6,5112 pa

GROUND RENT

Peppercorn

COUNCIL TAX

Westminster City Band E

RESIDENTS PARKING

TBC

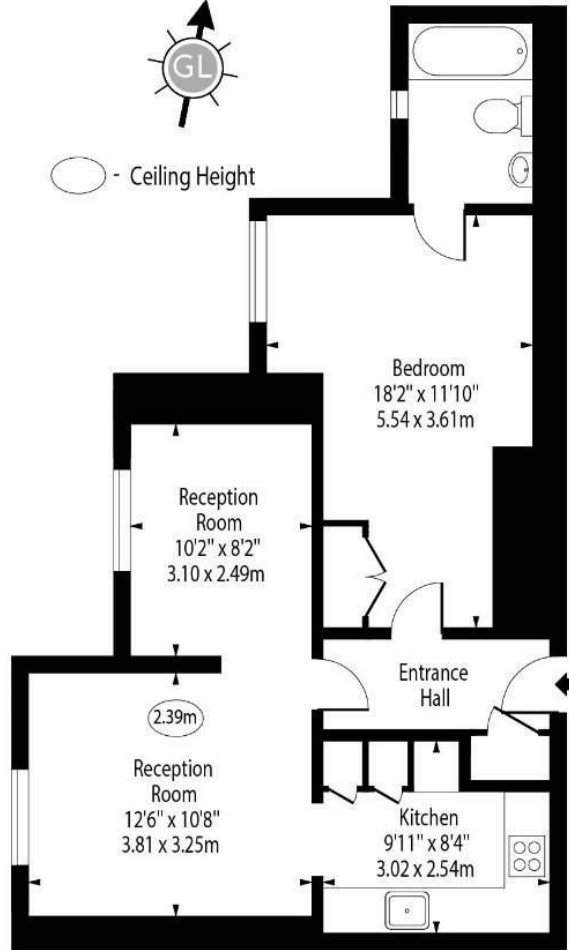
COMMUTE

Great Portland Street Station 300m
Regents Park Station 550m
Oxford Circus 700m

Weymouth Street, W1W 5BX



○ - Ceiling Height



Second Floor

Approx Gross Internal Area 592 Sq Ft - 55.00 Sq M

For Illustration Purposes Only - Not To Scale
www.goldlens.co.uk
Ref. No. 022329E

Ready to talk?



**BEN
EVEREST**

DD: 020 7290 0592
M: 07944 967637
E: ben@ldg.co.uk



**DAVID
CALDEIRA**

DD: 020 4513 6756
M: 07368 333 545
E: david@ldg.co.uk



**EMLYN
YOUNG**

DD: 020 7290 0593
M: 07881 971 315
E: emlyn@ldg.co.uk



**ROBYN
CORRANCE**

DD: 020 7290 0594
T: 020 7580 1010
E: robyn@ldg.co.uk